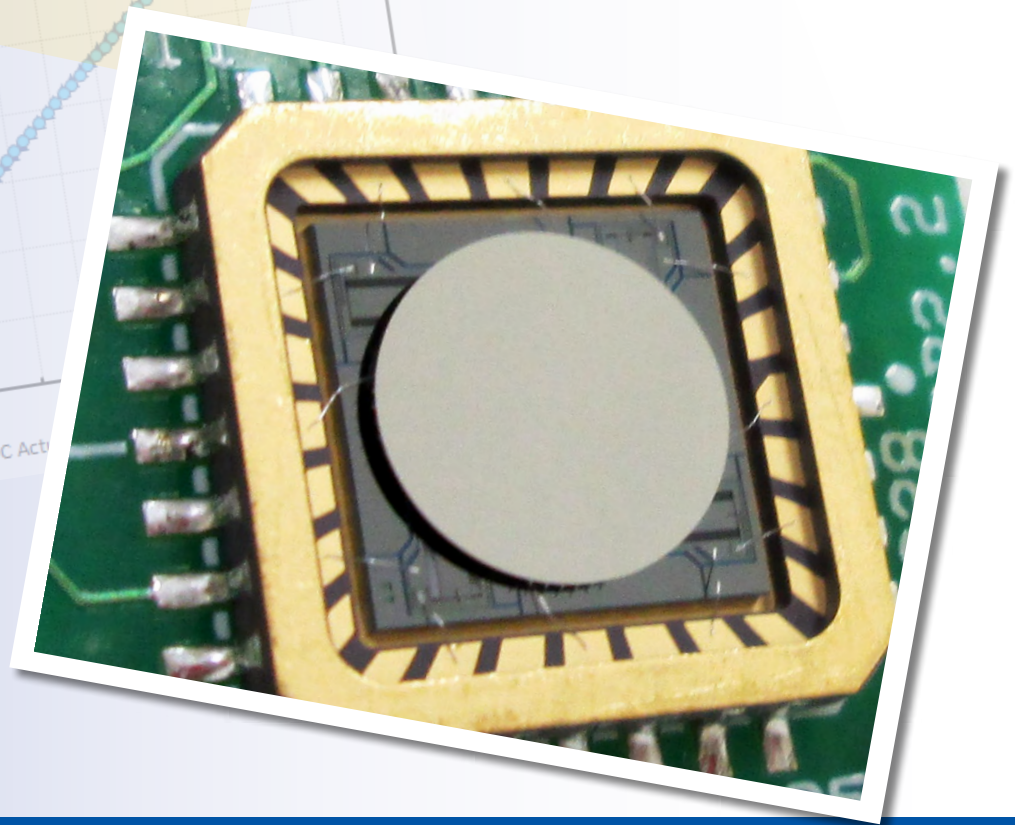
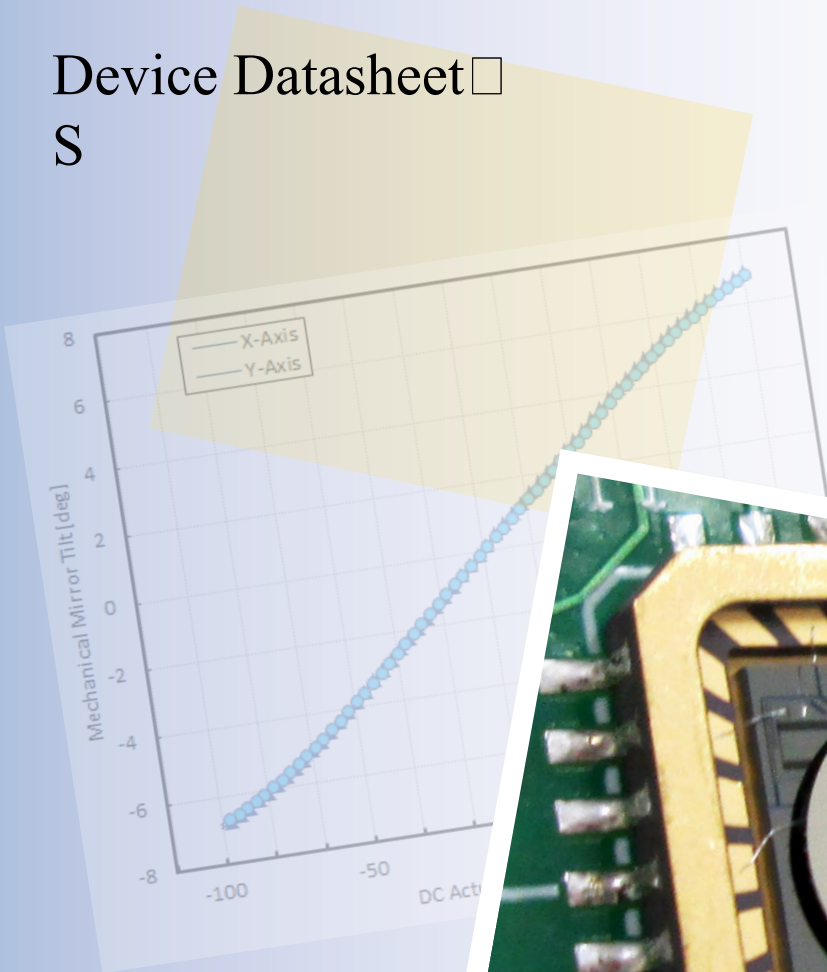


## Gimbal-Less Two-Axis Scanning MEMS Micromirrors

Device Datasheet

S



---

# Device Parameters Summary

**Device ID** : S2067

**Actuator Type** : 13Z2.1

**Mirror Type and Size** : Bonded mirror of 2.0mm diameter

**Mirror Coating** : Aluminum

**Maximum Angle - X Axis [degrees]** : 2.1637

**Maximum Angle - Y Axis [degrees]** : 2.2443

**Maximum Voltage - X Axis [V]** : 122

**Maximum Voltage - Y Axis [V]** : 122

**Bias Voltage [V]** : 70

**Maximum Angle - Coupled Axes [degrees]** : 2.7355

**Resonant Frequency - X Axis [Hz]** : 1997

**Resonant Frequency - Y Axis [Hz]** : 1948

**Quality Factor- X Axis** : 37

**Quality Factor - Y Axis** : 40

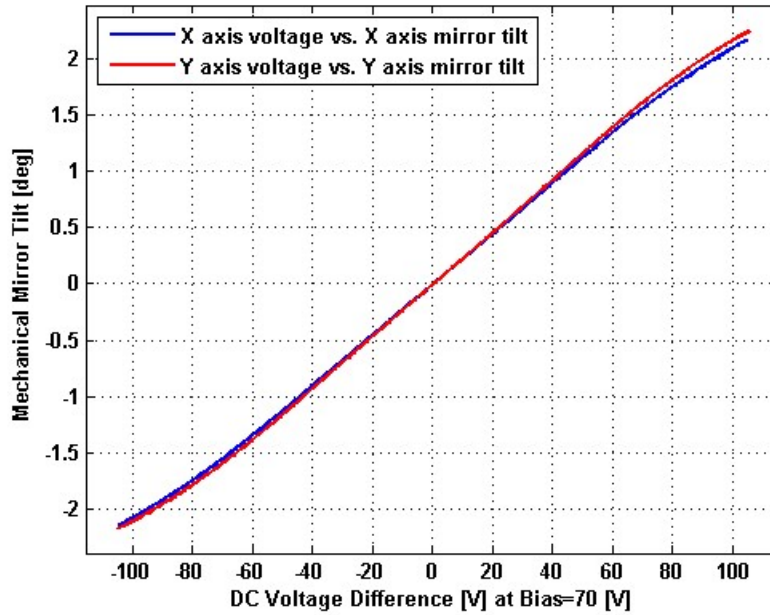
**Recommended LPF Cutoff Frequency (6th Order Bessel)** : 800

**Date and Time Report was Created:** 03-Feb-2013 at 23:37:52

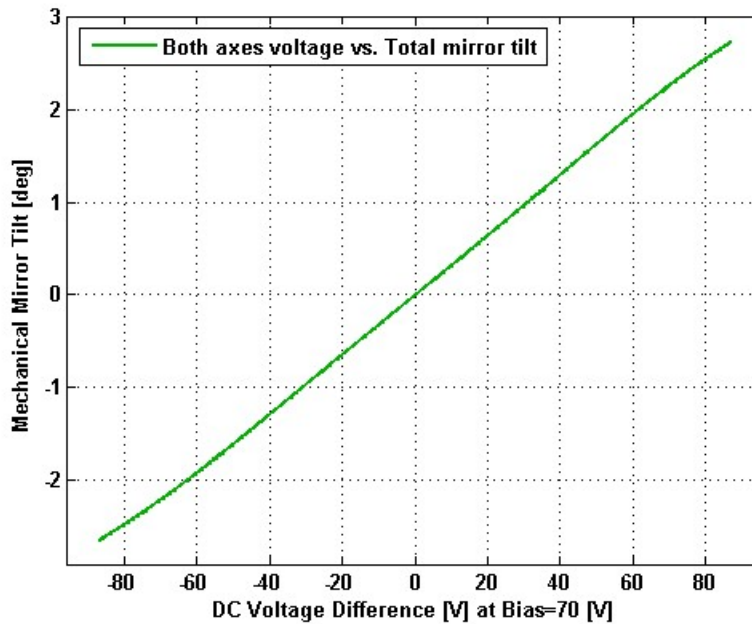
---

# Static Response

## Voltage vs. Angle - Individual Axes



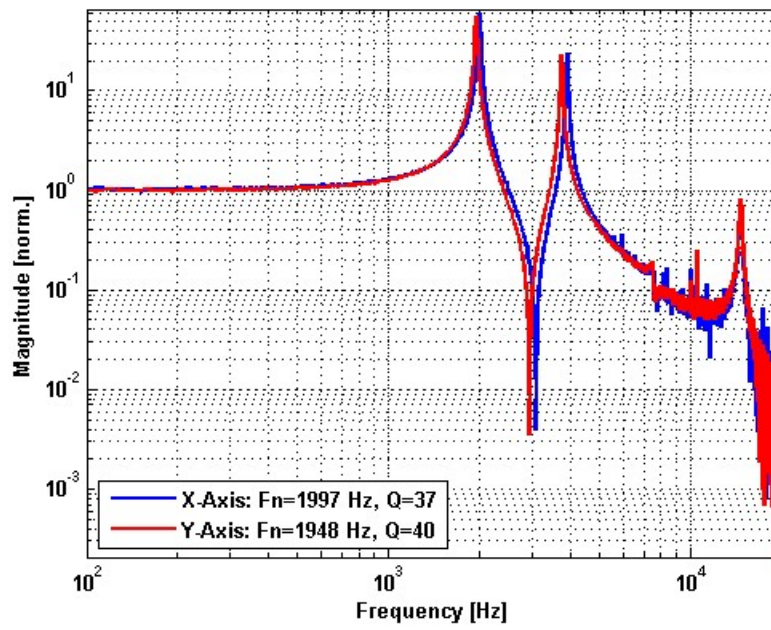
## Voltage vs. Angle - Coupled Axes



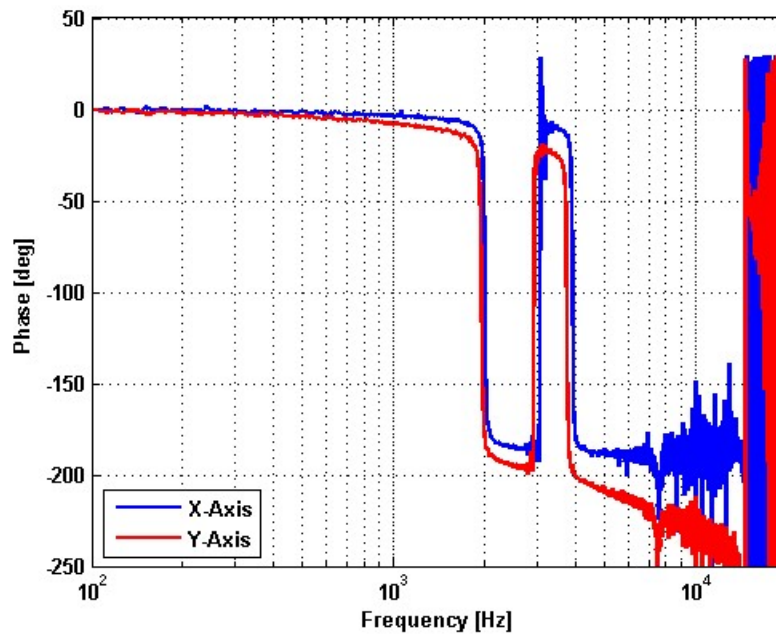
---

# Frequency Response

## Small Signal Frequency Response - Magnitude



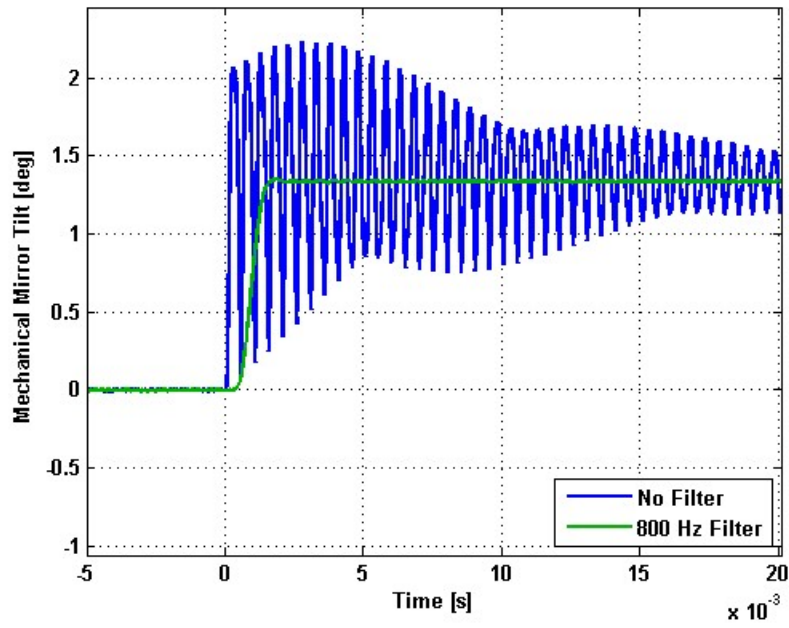
## Small Signal Frequency Response - Phase



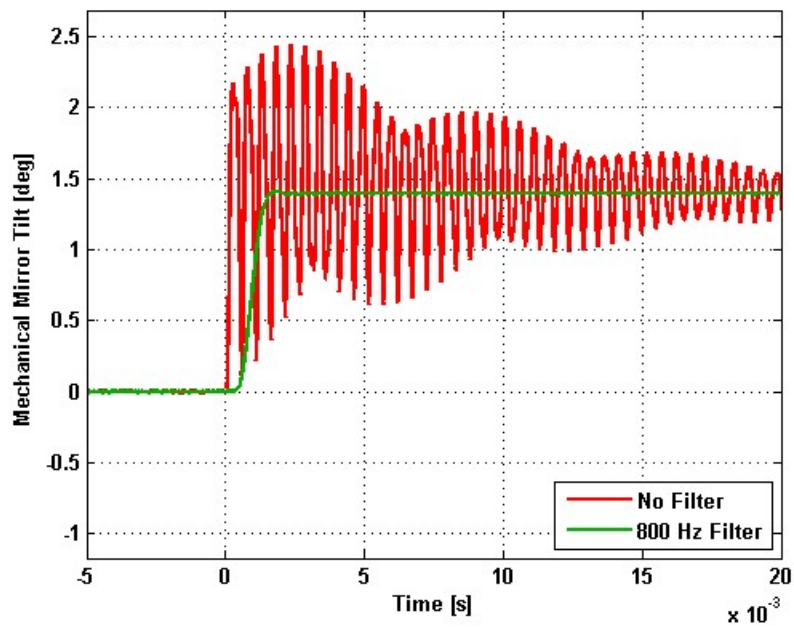
---

# Step Response

## X-Axis Step Response



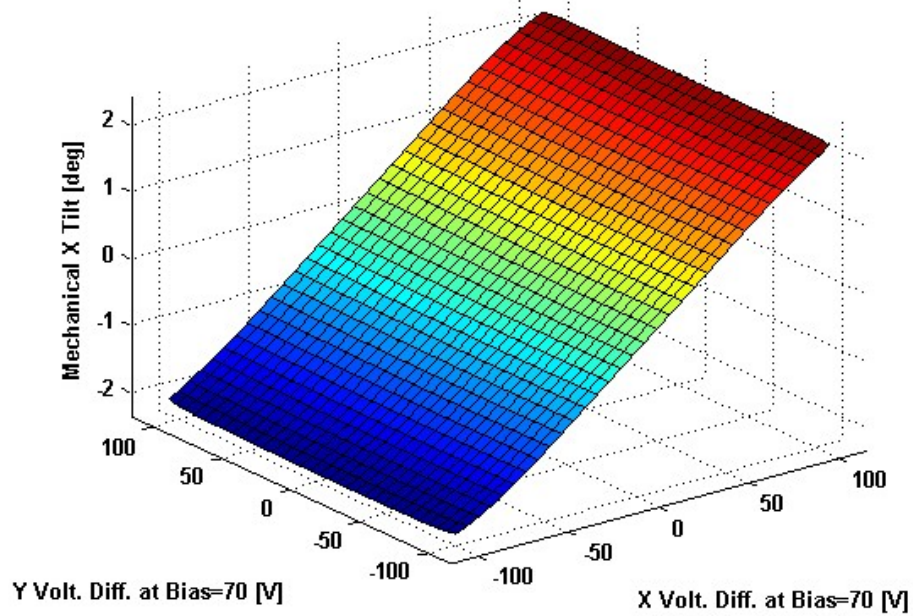
## Y-Axis Step Response



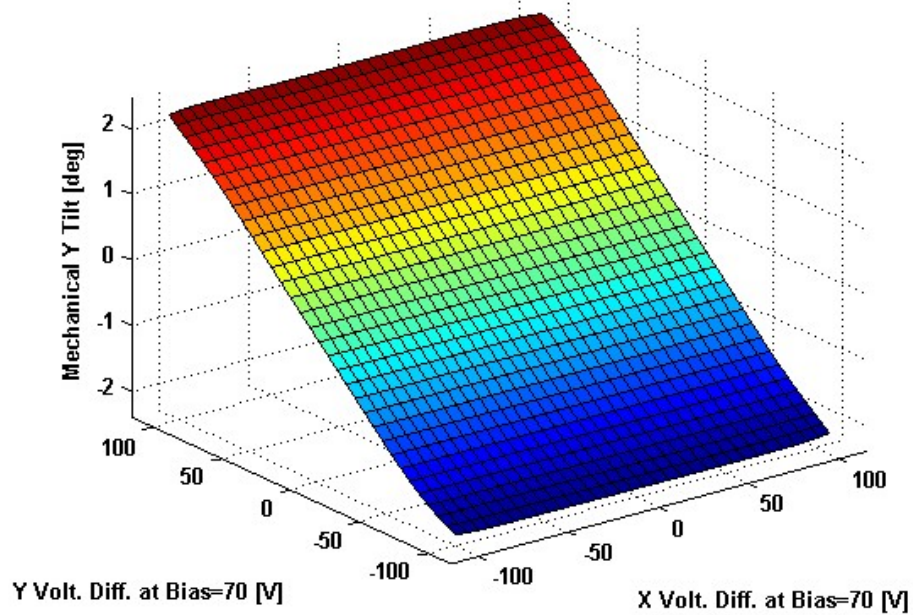
---

# 2D Lookup Tables

## Voltage vs. X Angle - Lookup Table



## Voltage vs. Y Angle - Lookup Table





# Y Angle vs. X Angle - Addressable Angles

