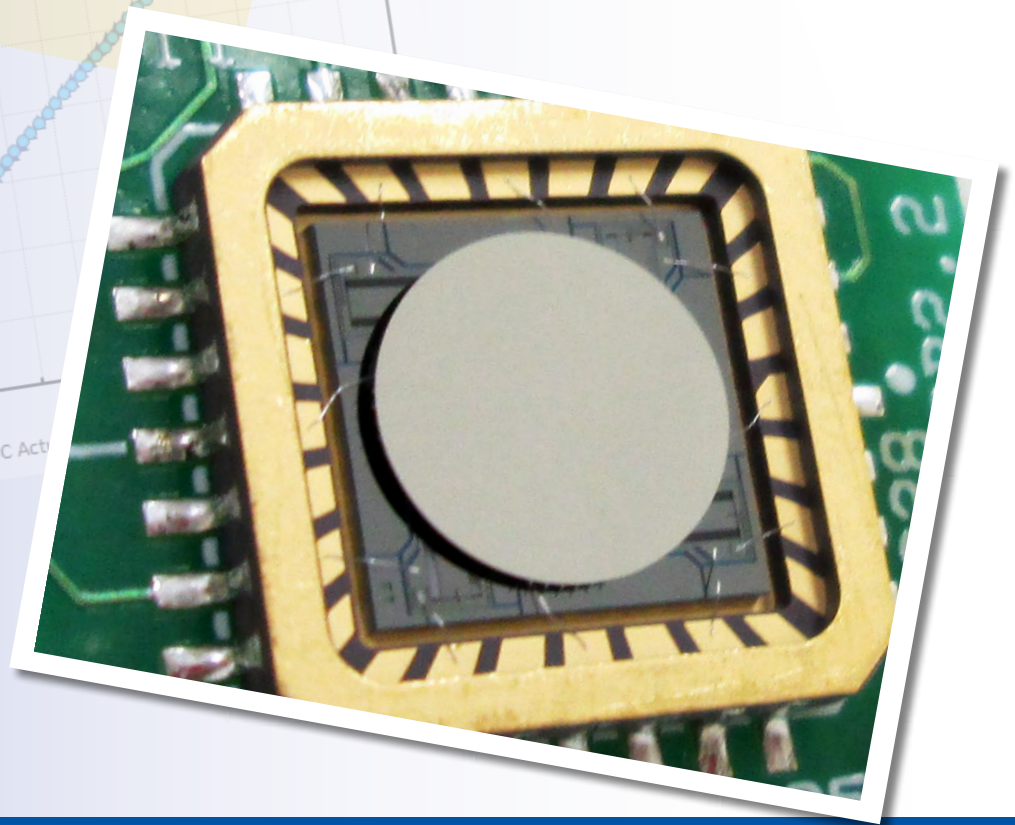
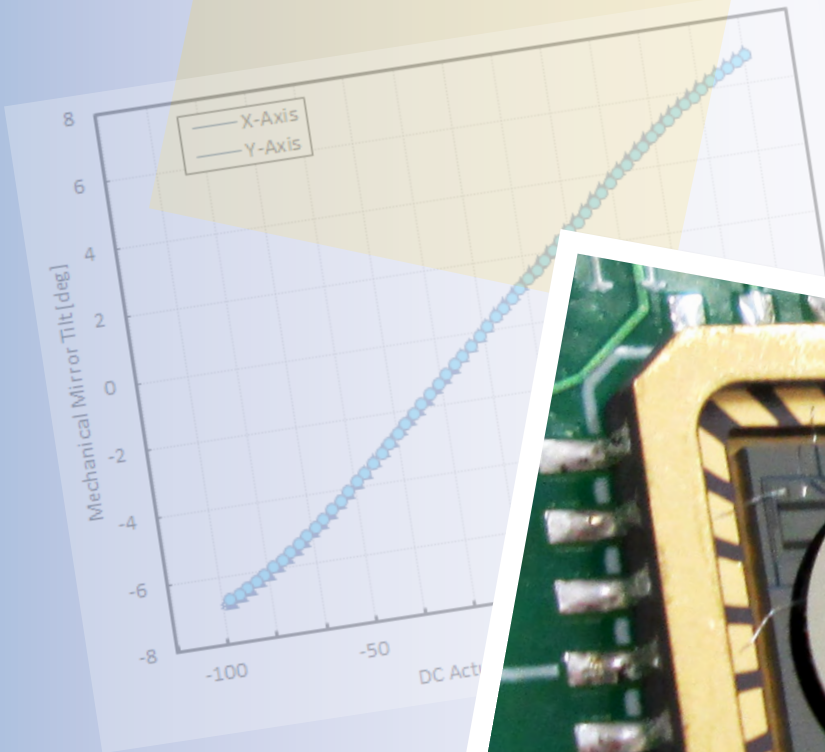


## Gimbal-Less Two-Axis Scanning MEMS Micromirrors

Device Datasheet  
S2008



---

# Device Parameters Summary

**Device ID** : S2008

**Actuator Type** : 13Z2.1

**Mirror Type and Size** : Bonded mirror of 2.4mm diameter

**Mirror Coating** : Gold

**Maximum Angle - X Axis [degrees]** : 2.3408

**Maximum Angle - Y Axis [degrees]** : 2.3467

**Maximum Voltage - X Axis [V]** : 127

**Maximum Voltage - Y Axis [V]** : 126

**Bias Voltage [V]** : 70

**Maximum Angle - Coupled Axes [degrees]** : 2.9097

**Resonant Frequency - X Axis [Hz]** : 1638

**Resonant Frequency - Y Axis [Hz]** : 1582

**Quality Factor- X Axis** : 42

**Quality Factor - Y Axis** : 36

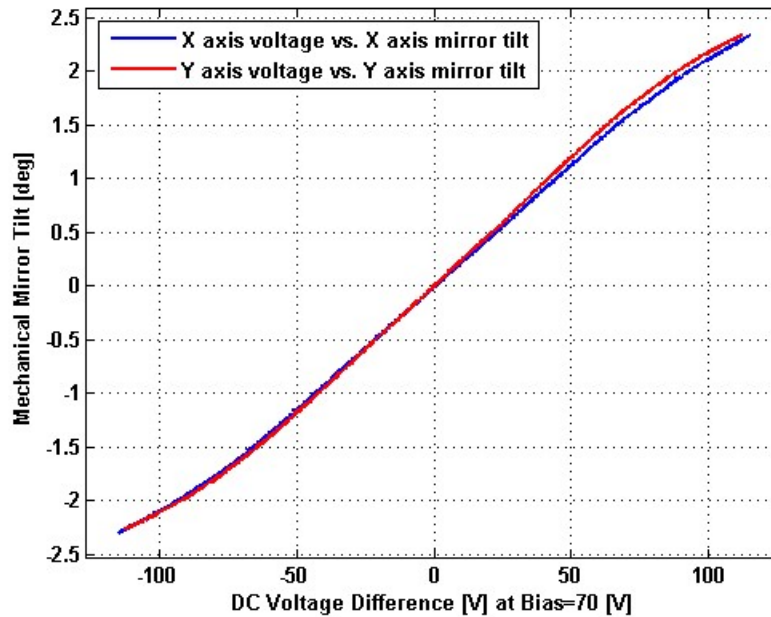
**Recommended LPF Cutoff Frequency (6th Order Bessel)** : 500

**Date and Time Report was Created:** 04-Dec-2012 at 18:24:16

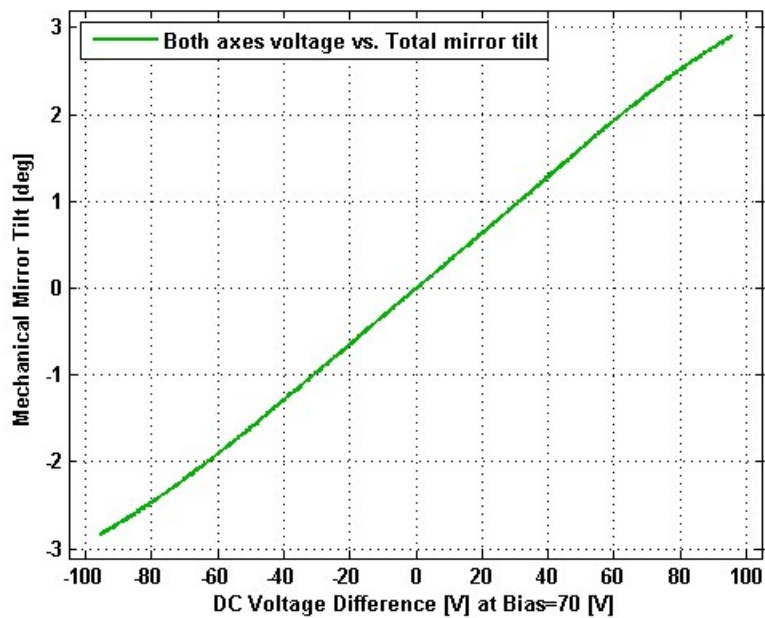
---

# Static Response

## Voltage vs. Angle - Individual Axes



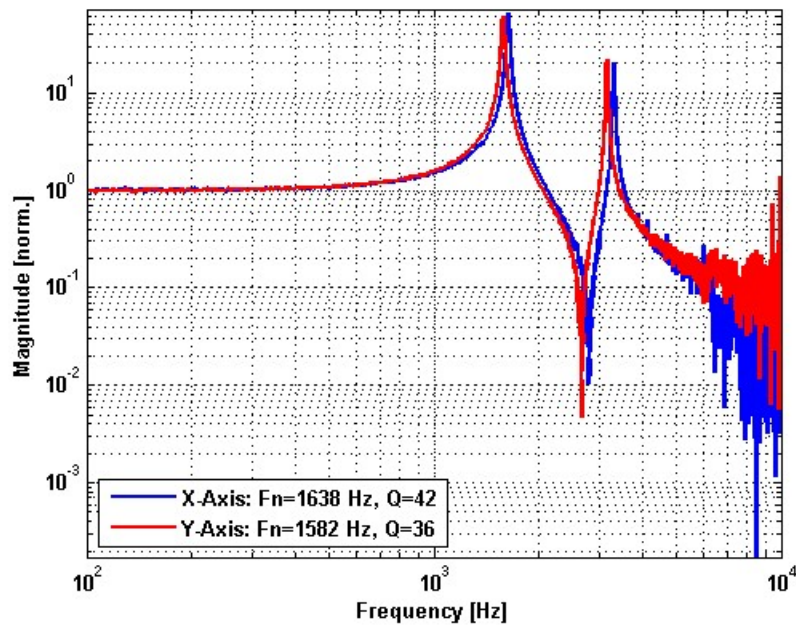
## Voltage vs. Angle - Coupled Axes



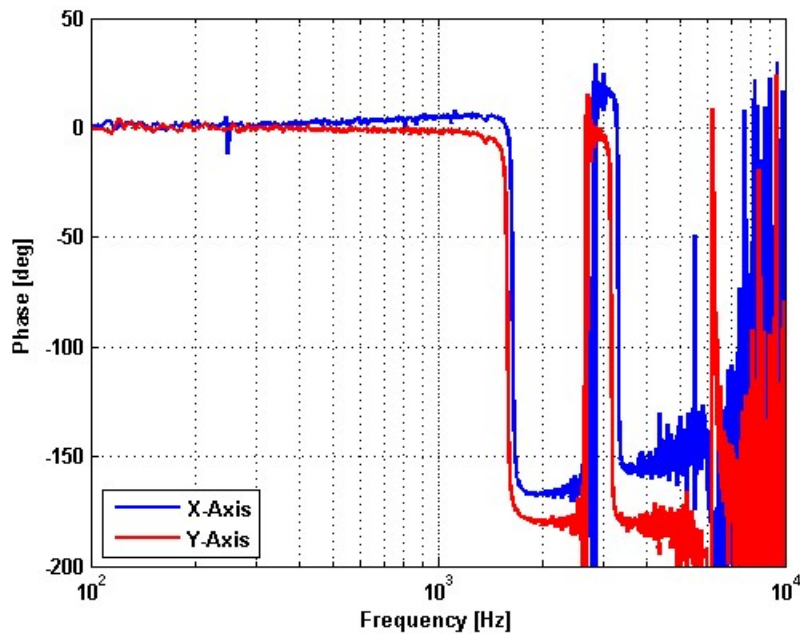
---

# Frequency Response

## Small Signal Frequency Response - Magnitude



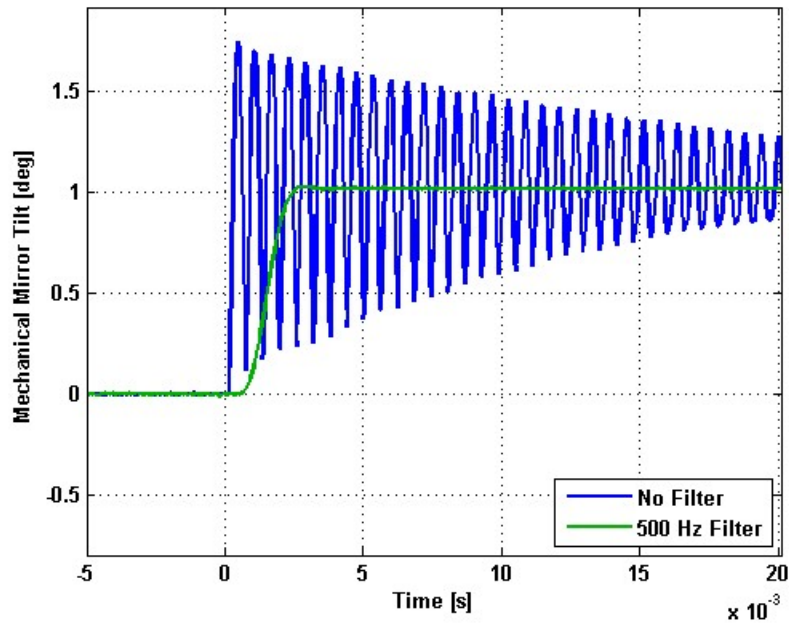
## Small Signal Frequency Response - Phase



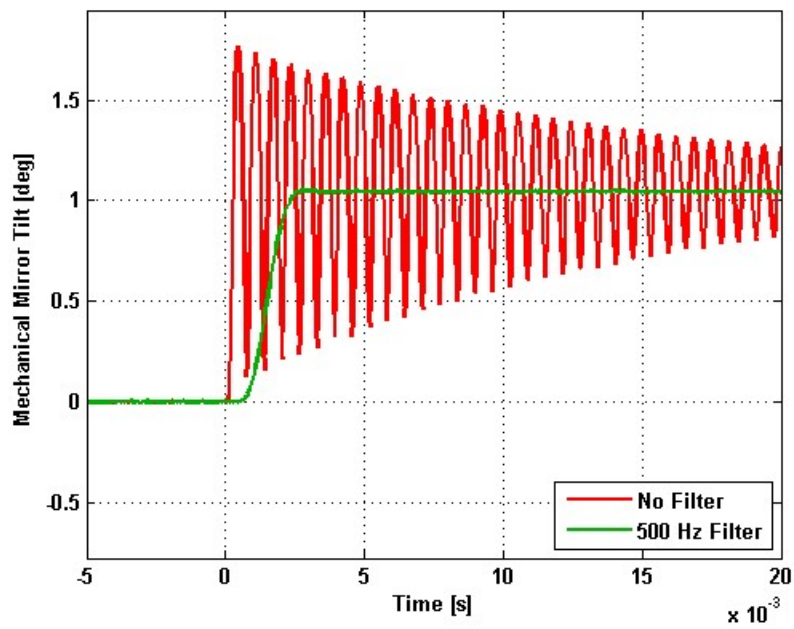
---

# Step Response

## X-Axis Step Response



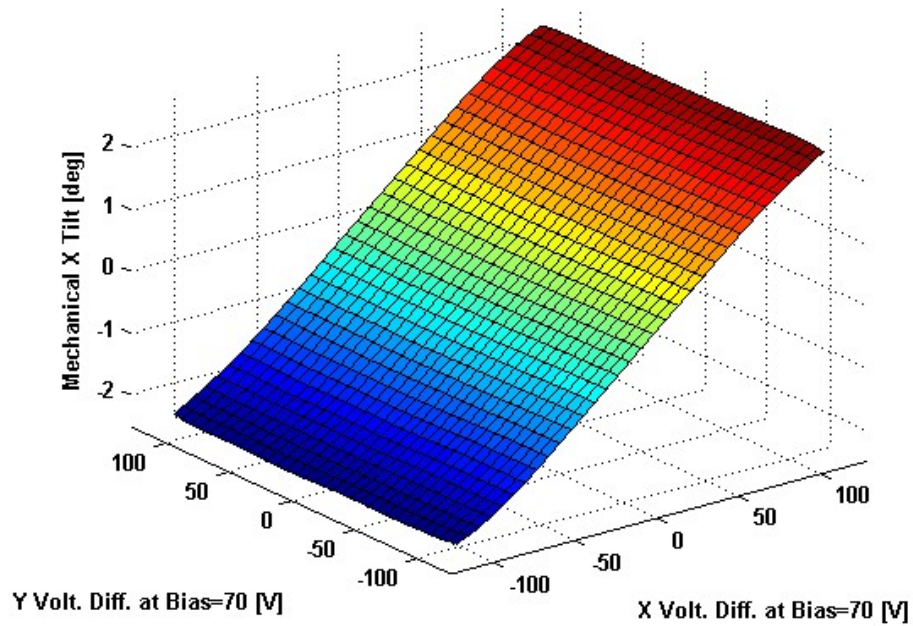
## Y-Axis Step Response



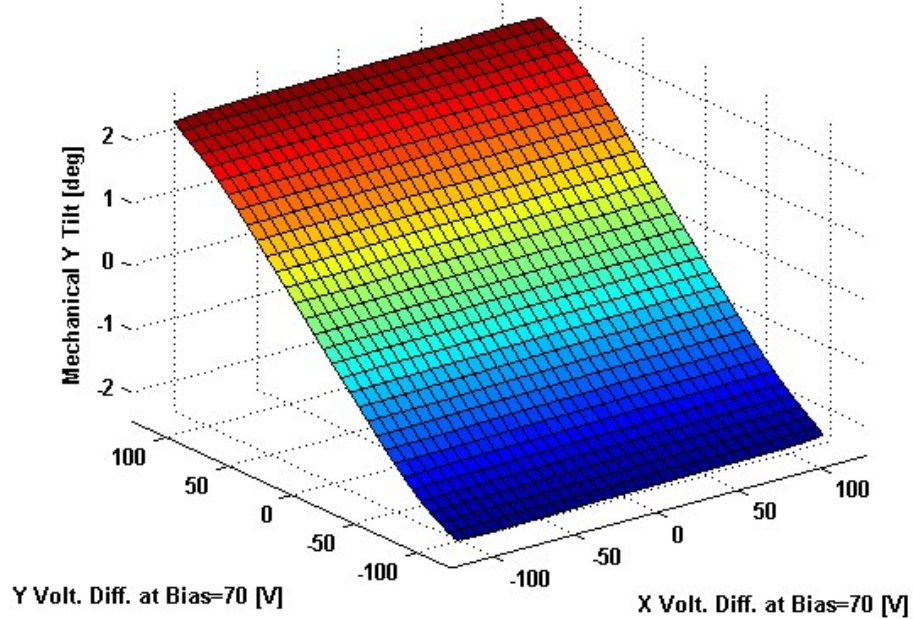
---

# 2D Lookup Tables

## Voltage vs. X Angle - Lookup Table



## Voltage vs. Y Angle - Lookup Table



# Y Angle vs. X Angle - Addressable Angles

