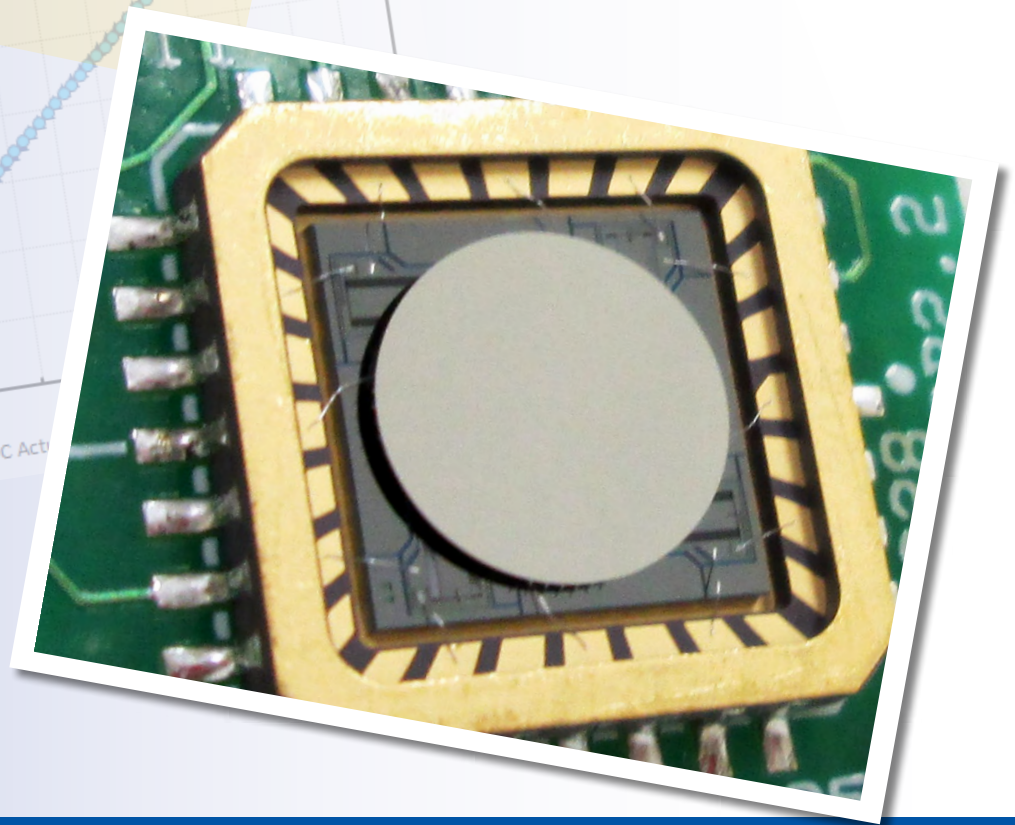
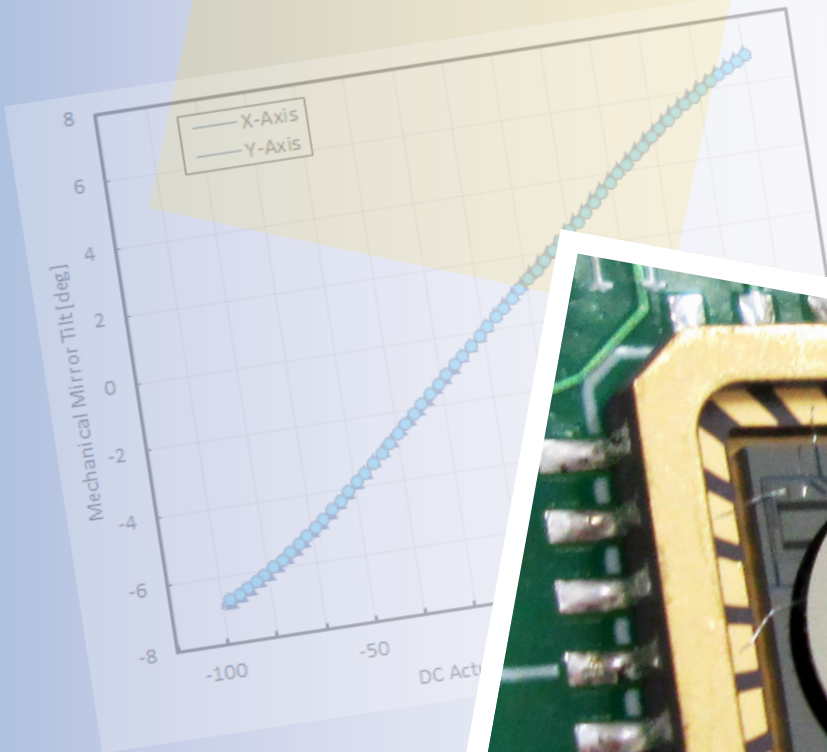


Gimbal-Less Two-Axis Scanning MEMS Micromirrors

Device Datasheet
S3503



Device Parameters Summary

Device ID : S3503

Actuator Type : A1B1.1

Mirror Type and Size : Bonded mirror of 2.0mm diameter

Mirror Coating : Aluminum

Maximum Angle - X Axis [degrees] : 5.1639

Maximum Angle - Y Axis [degrees] : 5.2368

Maximum Voltage - X Axis [V] : 129

Maximum Voltage - Y Axis [V] : 129

Bias Voltage [V] : 70

Maximum Angle - Coupled Axes [degrees] : 6.3858

Resonant Frequency - X Axis [Hz] : 775

Resonant Frequency - Y Axis [Hz] : 770

Quality Factor- X Axis : 63

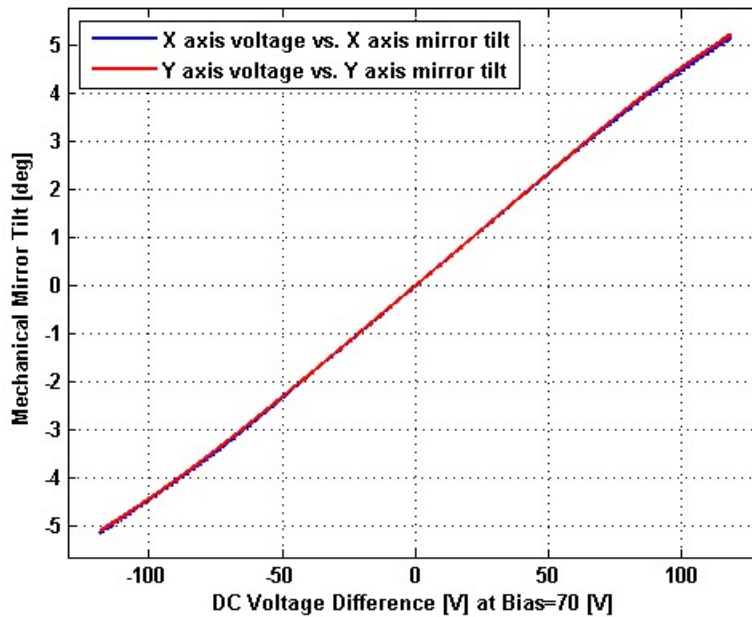
Quality Factor - Y Axis : 63

Recommended LPF Cutoff Frequency (6th Order Bessel) : 280

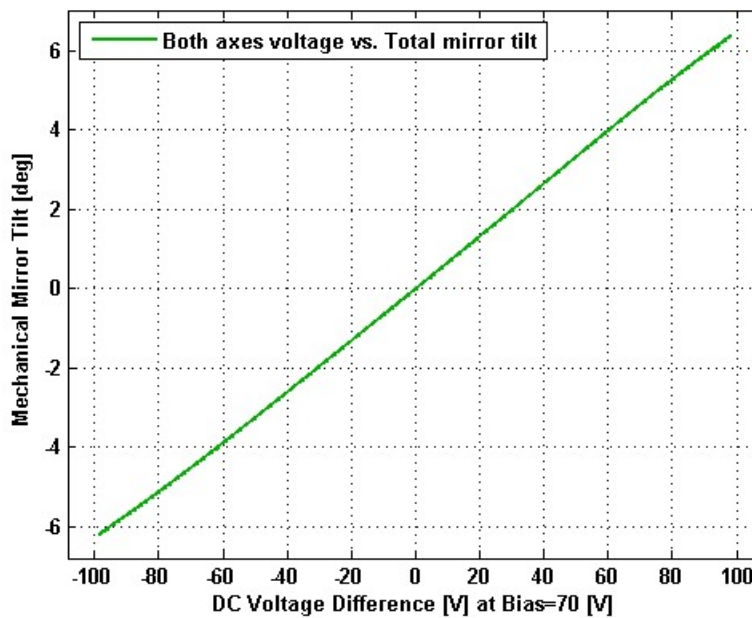
Date and Time Report was Created: 14-Jan-2014 at 15:27:25

Static Response

Voltage vs. Angle - Individual Axes

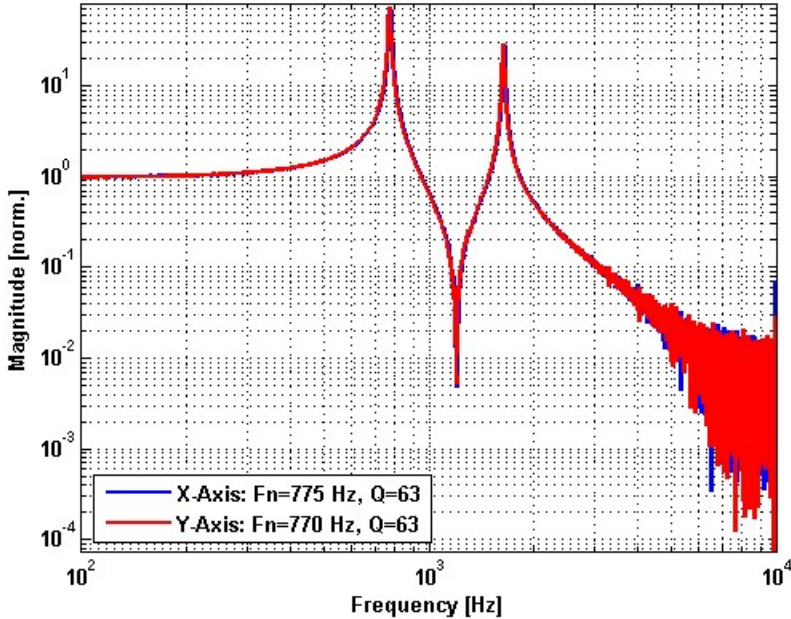


Voltage vs. Angle - Coupled Axes

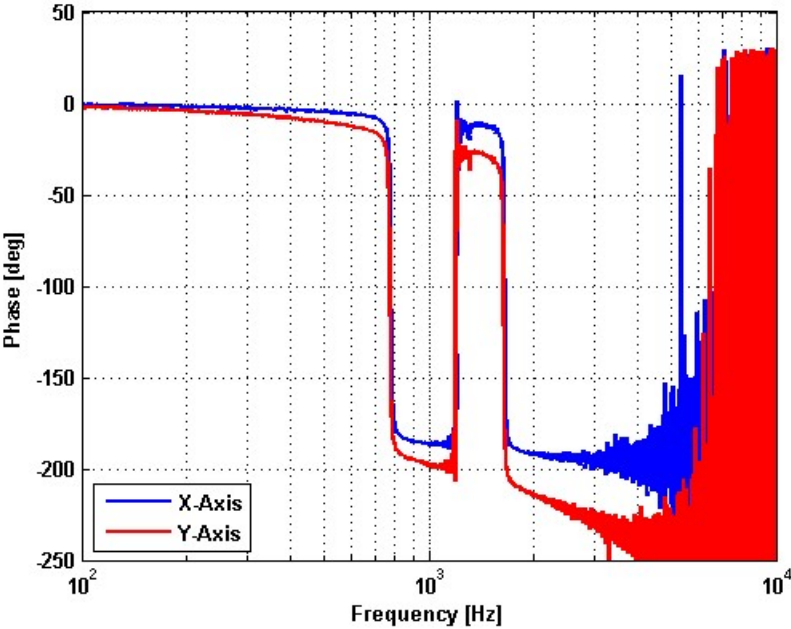


Frequency Response

Small Signal Frequency Response - Magnitude

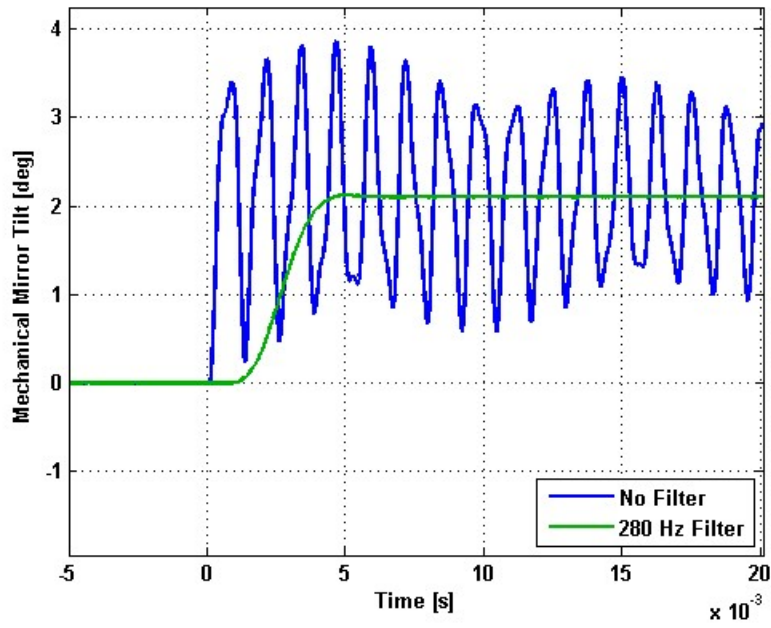


Small Signal Frequency Response - Phase

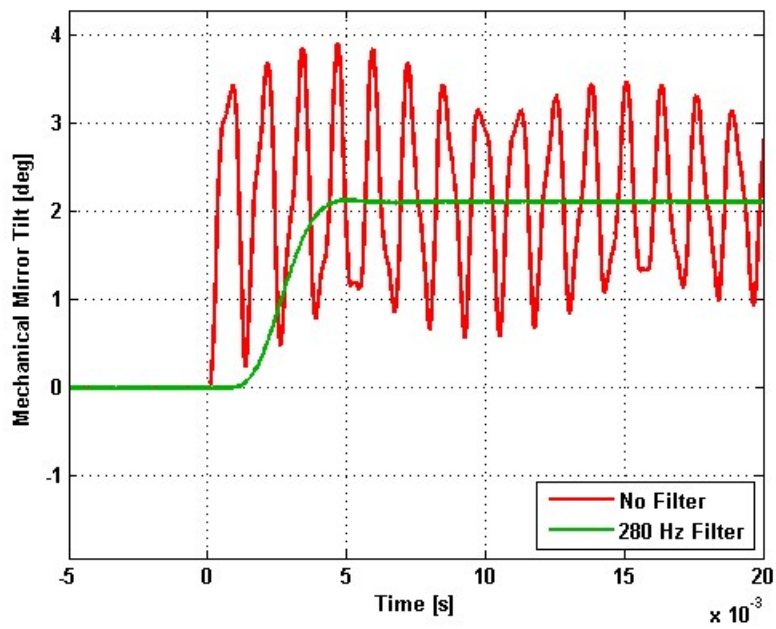


Step Response

X-Axis Step Response

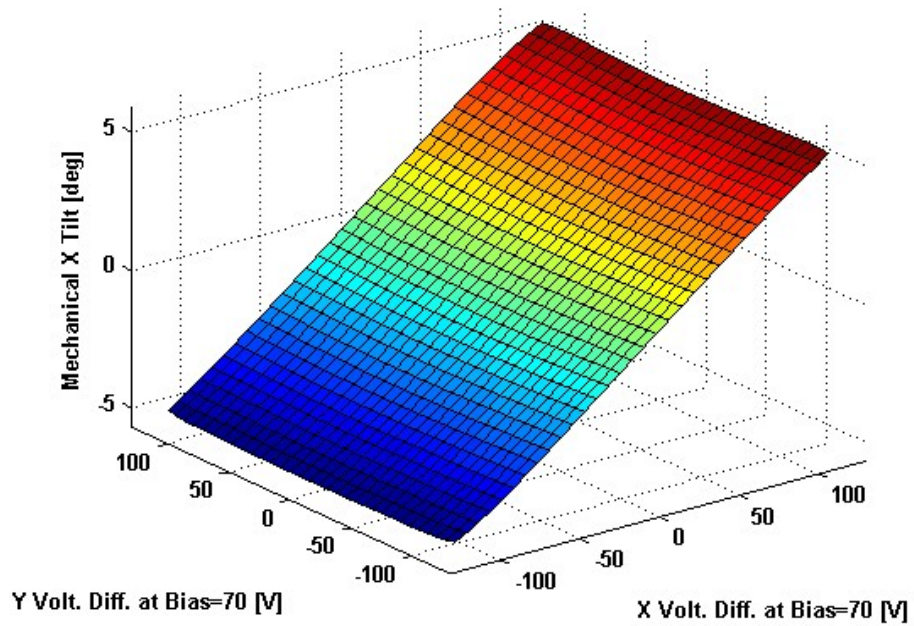


Y-Axis Step Response

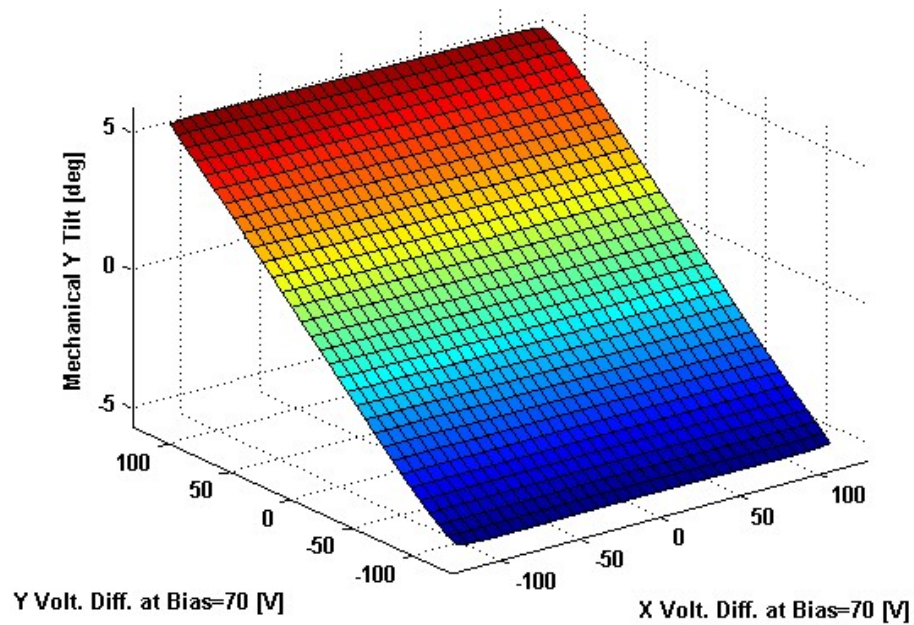


2D Lookup Tables

Voltage vs. X Angle - Lookup Table



Voltage vs. Y Angle - Lookup Table



Y Angle vs. X Angle - Addressable Angles

