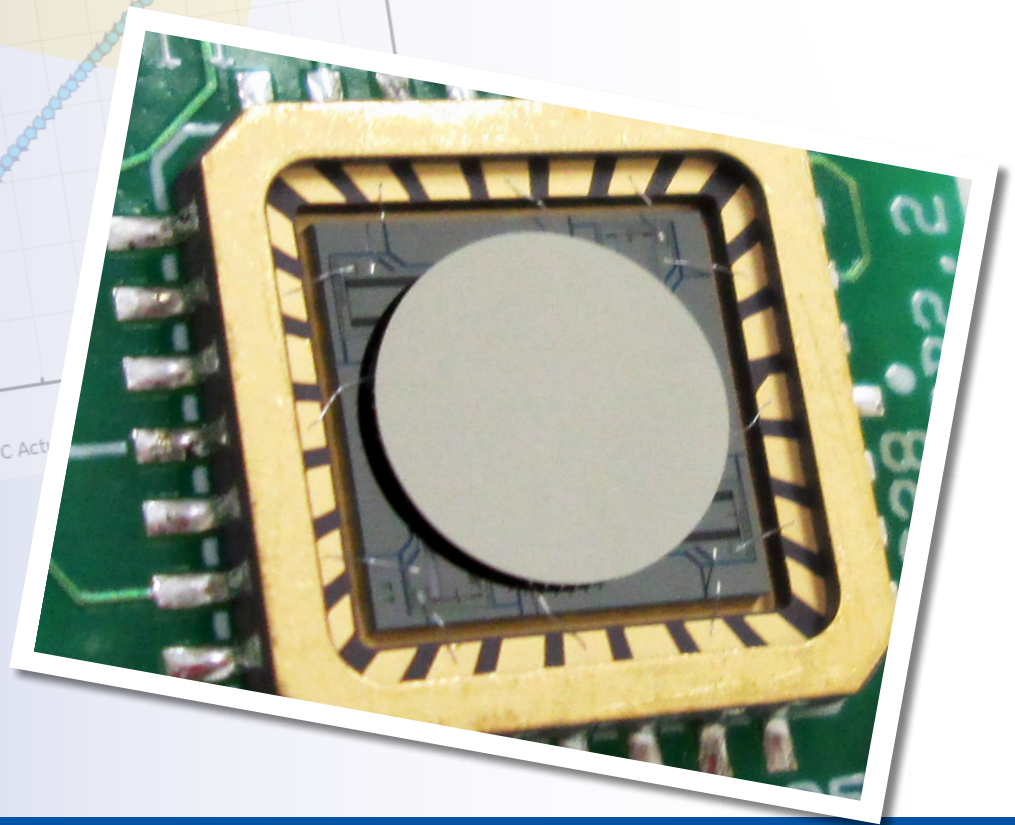
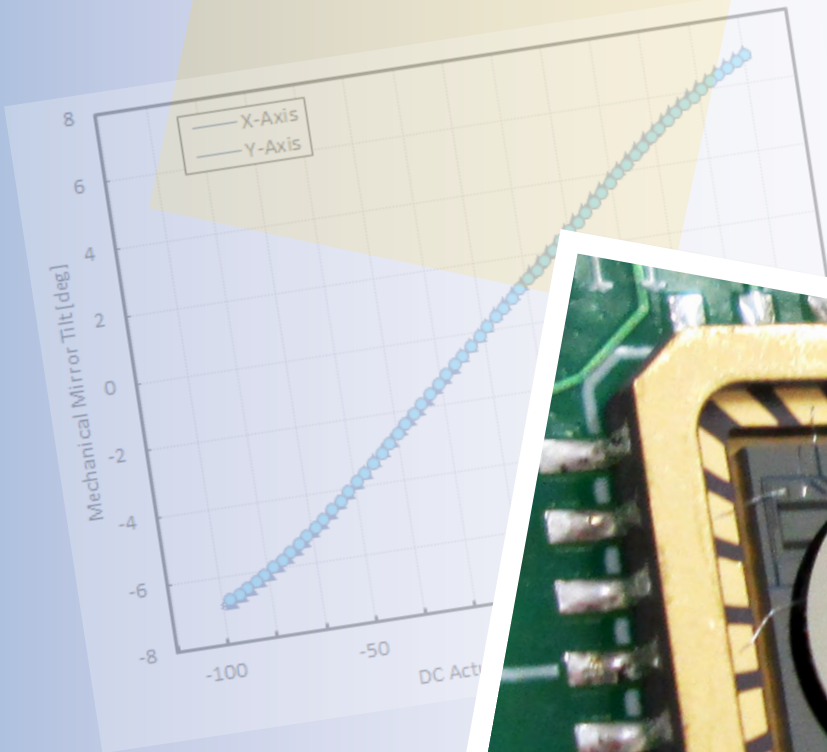


Gimbal-Less Two-Axis Scanning MEMS Micromirrors

Device Datasheet
S2135



Device Parameters Summary

Device ID : S2135

Actuator Type : A1B2.2

Mirror Type and Size : Bonded mirror of 800um diameter

Mirror Coating : Aluminum

Maximum Angle - X Axis [degrees] : 4.8623

Maximum Angle - Y Axis [degrees] : 4.8262

Maximum Voltage - X Axis [V] : 125

Maximum Voltage - Y Axis [V] : 125

Bias Voltage [V] : 70

Maximum Angle - Coupled Axes [degrees] : 6.1599

Resonant Frequency - X Axis [Hz] : 5552

Resonant Frequency - Y Axis [Hz] : 5625

Quality Factor- X Axis : 29

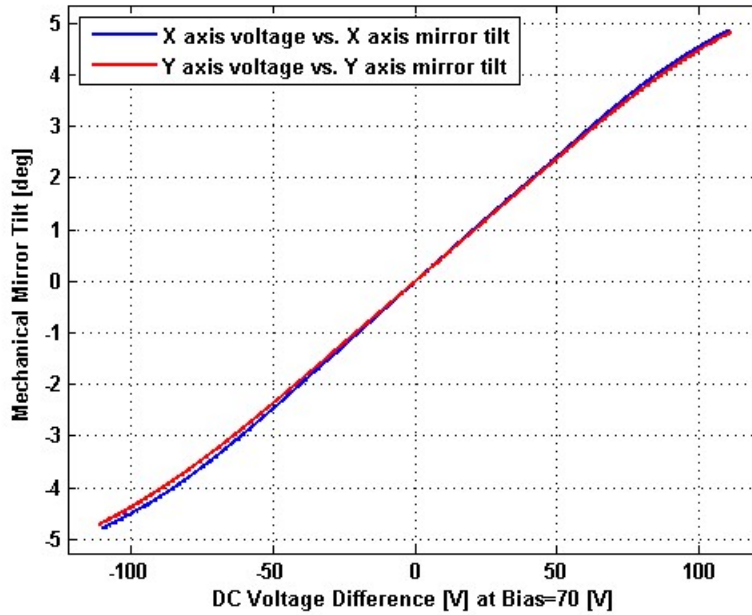
Quality Factor - Y Axis : 29

Recommended LPF Cutoff Frequency (6th Order Bessel) : 1000

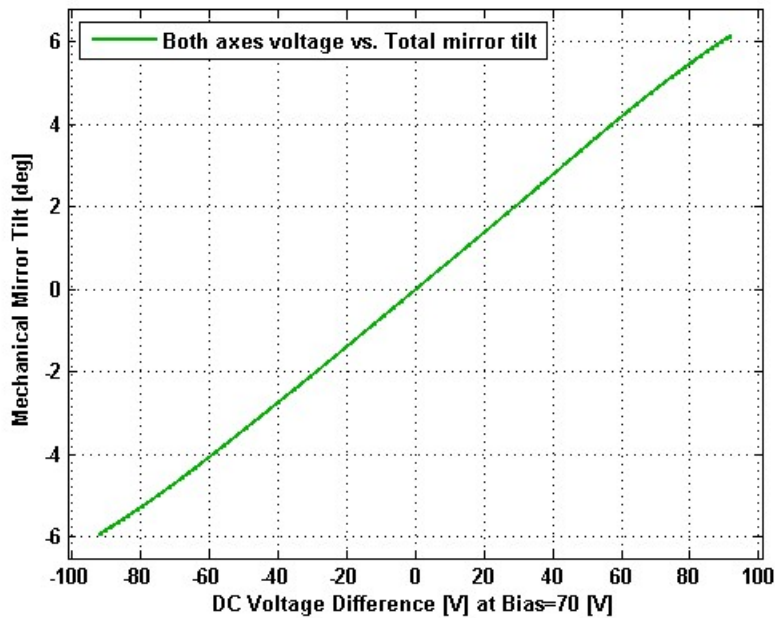
Date and Time Report was Created: 21-Mar-2013 at 15:30:18

Static Response

Voltage vs. Angle - Individual Axes

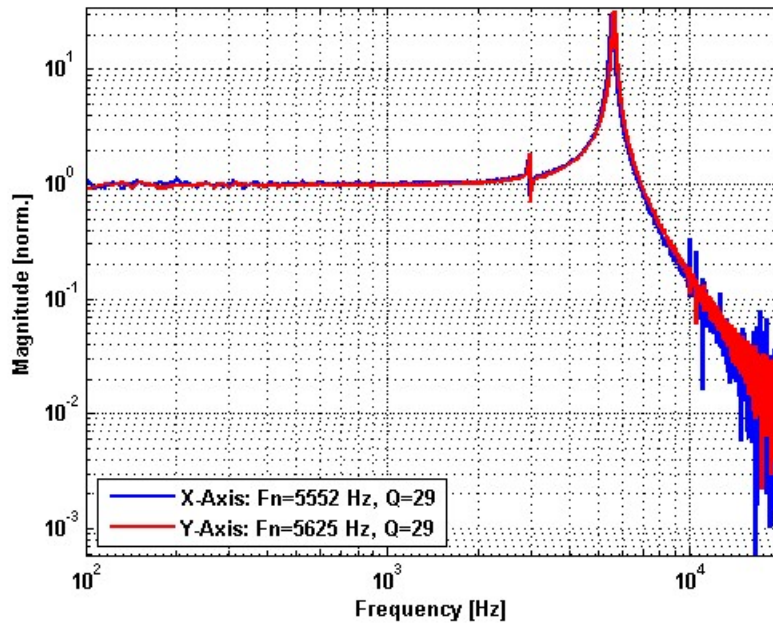


Voltage vs. Angle - Coupled Axes

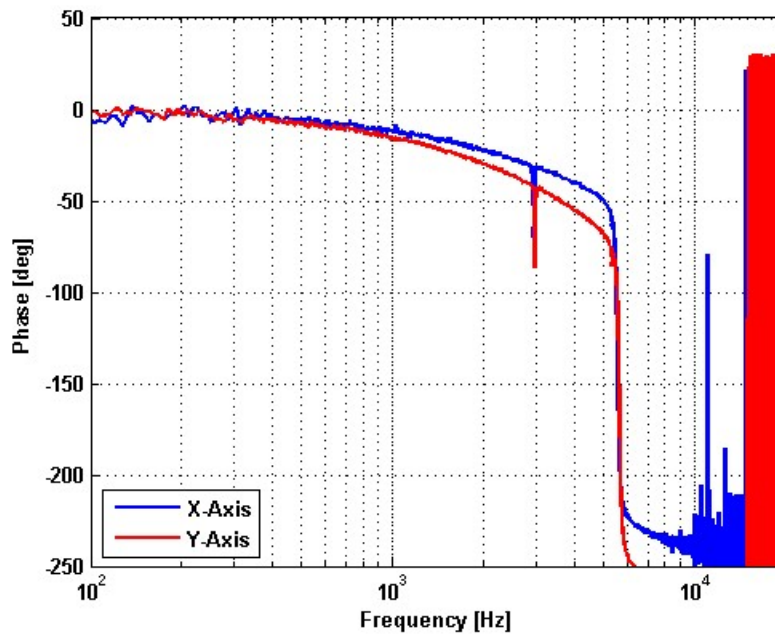


Frequency Response

Small Signal Frequency Response - Magnitude

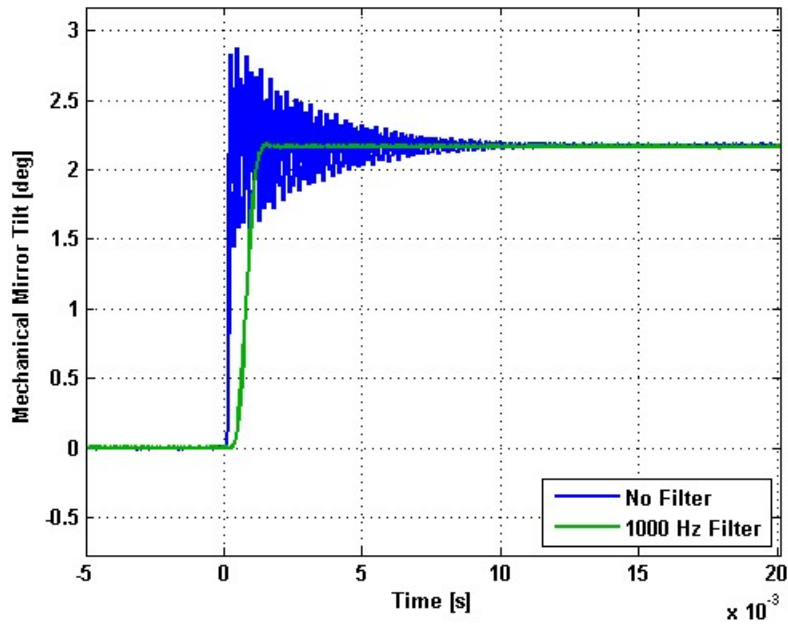


Small Signal Frequency Response - Phase

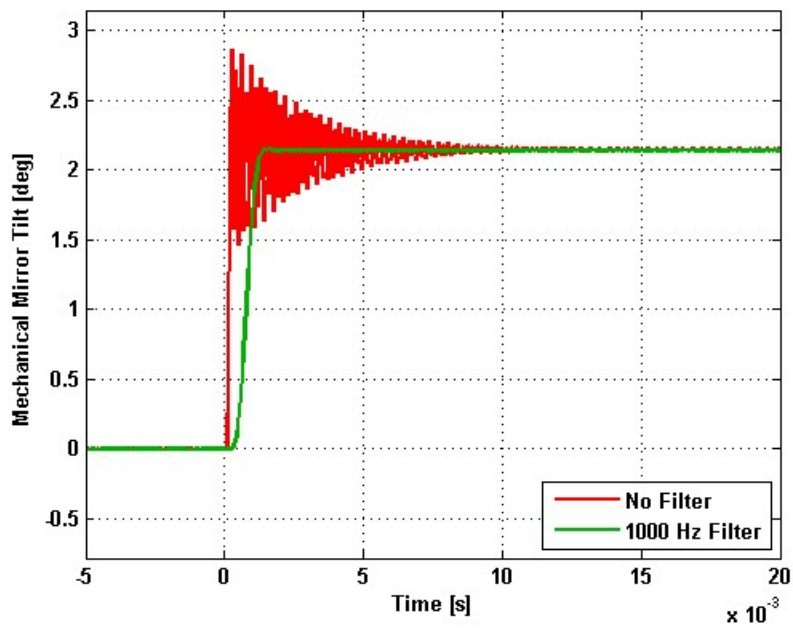


Step Response

X-Axis Step Response

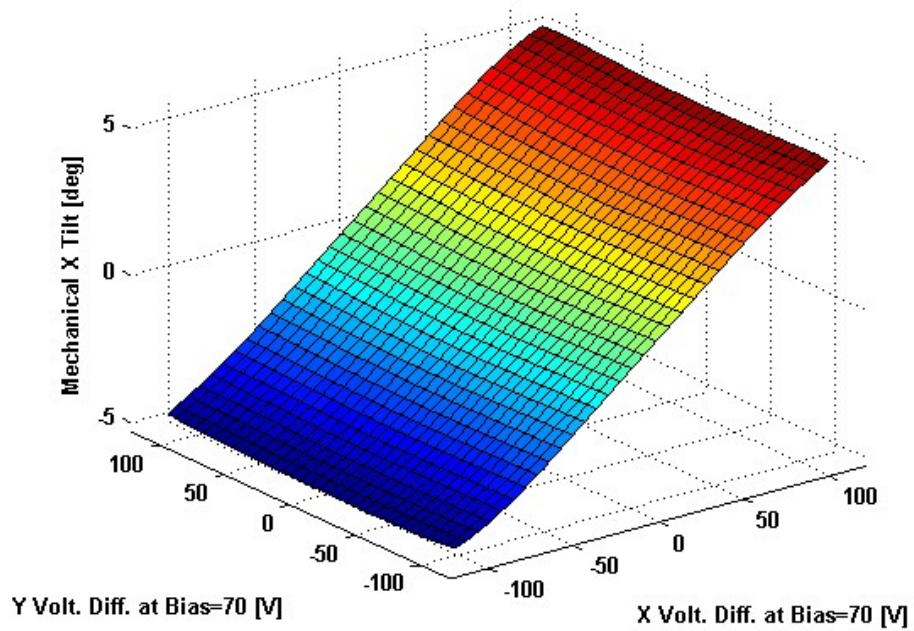


Y-Axis Step Response

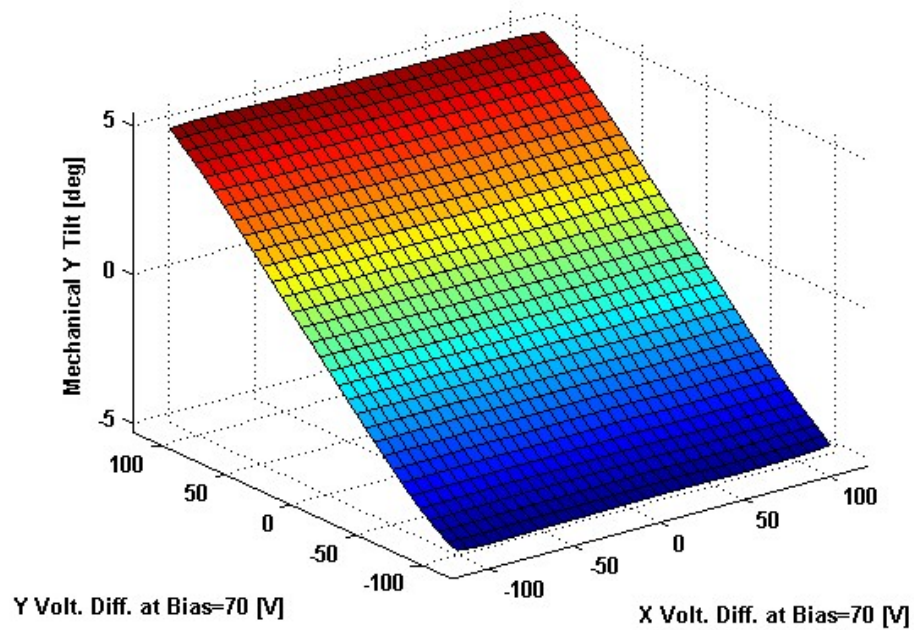


2D Lookup Tables

Voltage vs. X Angle - Lookup Table



Voltage vs. Y Angle - Lookup Table



Y Angle vs. X Angle - Addressable Angles

