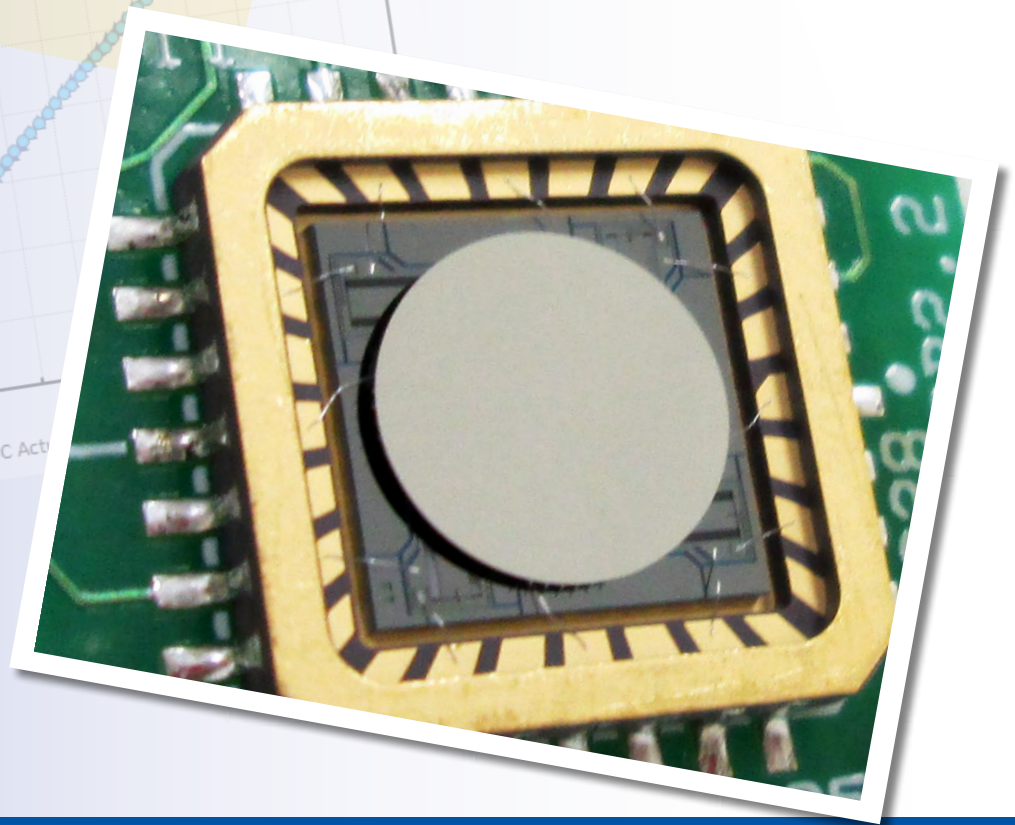
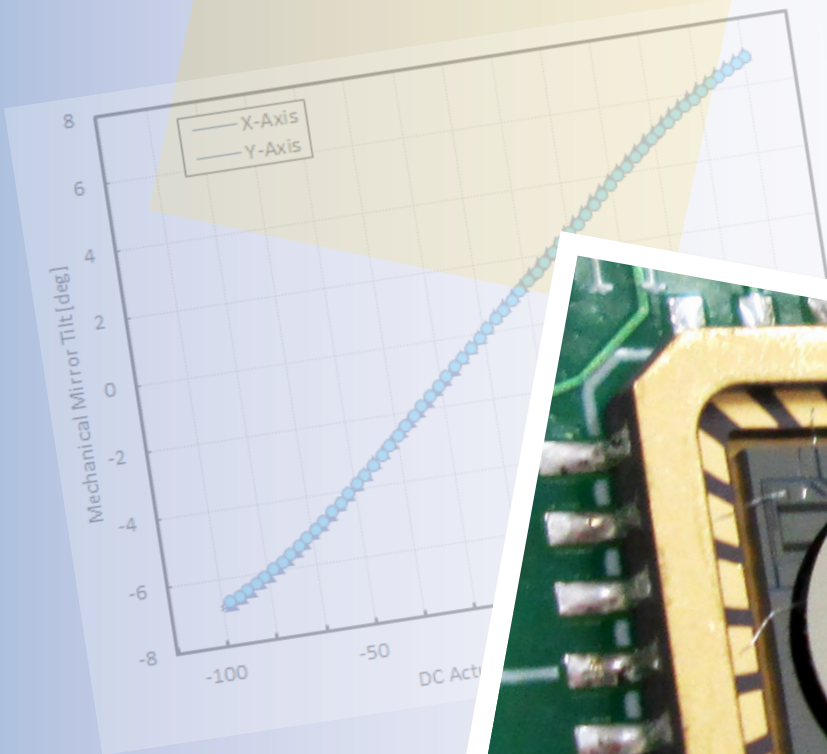


Gimbal-Less Two-Axis Scanning MEMS Micromirrors

Device Datasheet
S3501



Device Parameters Summary

Device ID : S3501

Actuator Name : A1B1.4

Actuator Type : 4-Quadrant (Two-Axis, Bidirectional)

Mirror Type and Size : Bonded mirror of 2.4mm diameter

Mirror Coating : Gold

Maximum Angle - X Axis [degrees] : 2.8372

Maximum Angle - Y Axis [degrees] : 2.8324

Maximum Voltage - X Axis [V] : 138

Maximum Voltage - Y Axis [V] : 138

Bias Voltage [V] : 70

Maximum Angle - Coupled Axes [degrees] : 3.3017

Resonant Frequency - X Axis [Hz] : 859

Resonant Frequency - Y Axis [Hz] : 859

Quality Factor- X Axis : 60

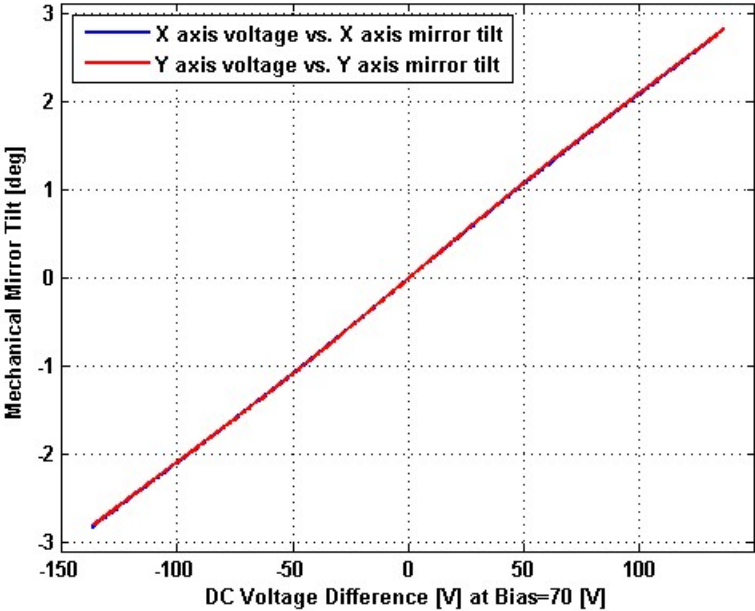
Quality Factor - Y Axis : 53

Recommended LPF Cutoff Frequency (6th Order Bessel) : 350

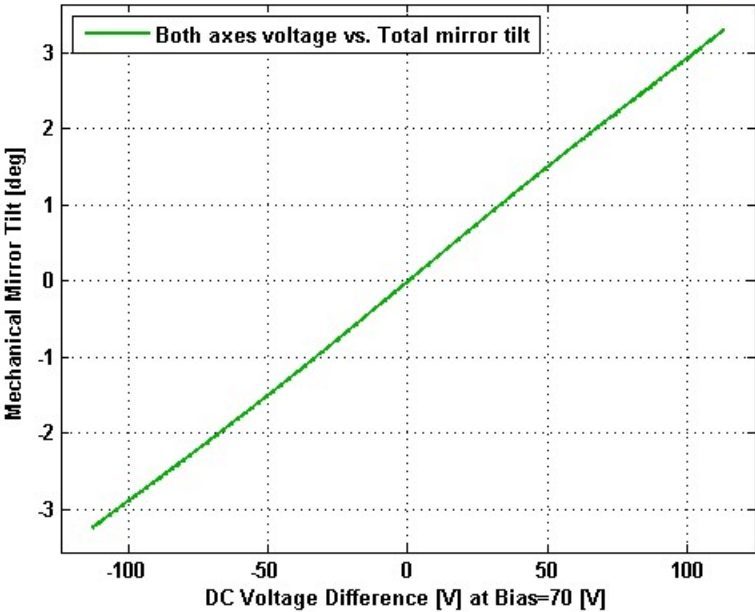
Date and Time Report was Created: 27-Jan-2015 at 21:10:54

Static Response

Voltage vs. Angle - Individual Axes

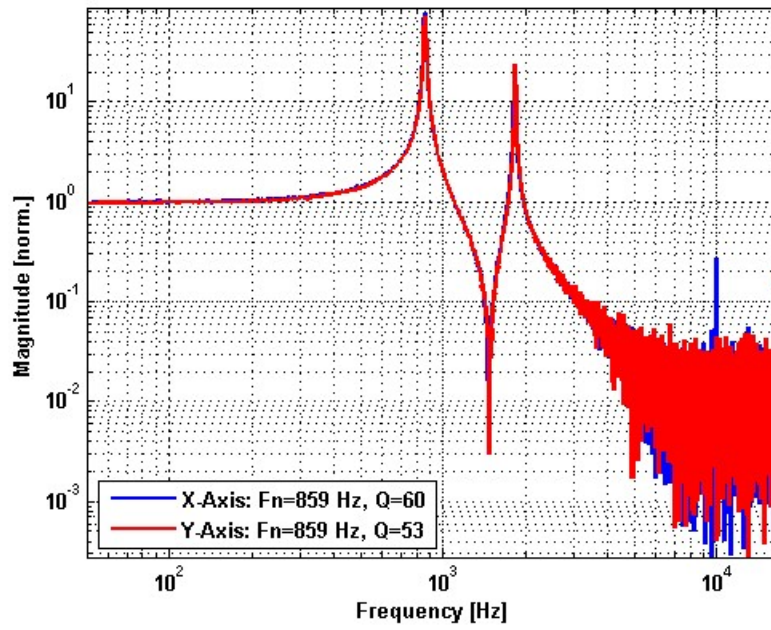


Voltage vs. Angle - Coupled Axes

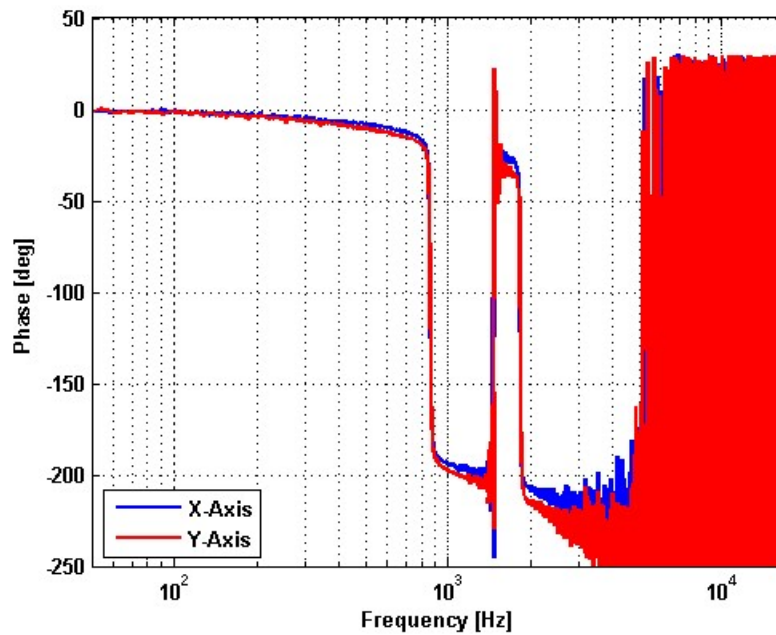


Frequency Response

Small Signal Frequency Response - Magnitude

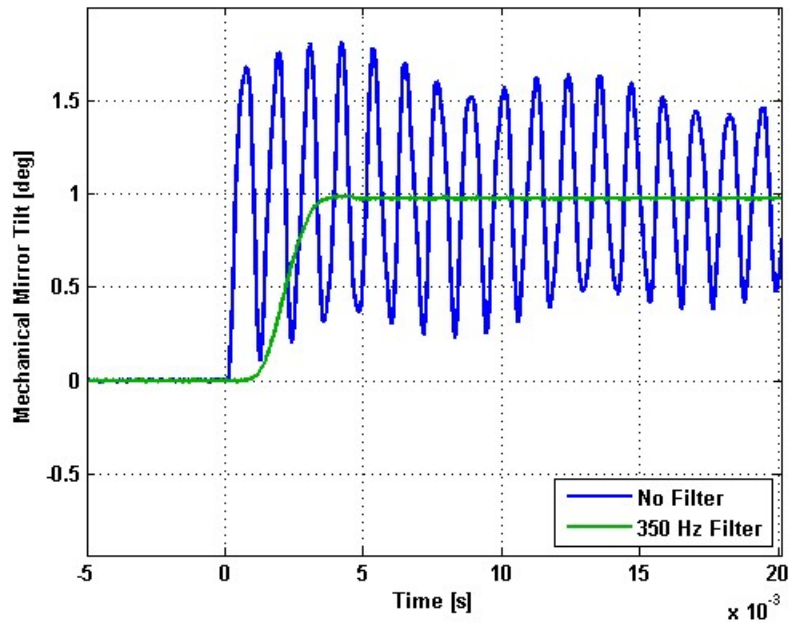


Small Signal Frequency Response - Phase

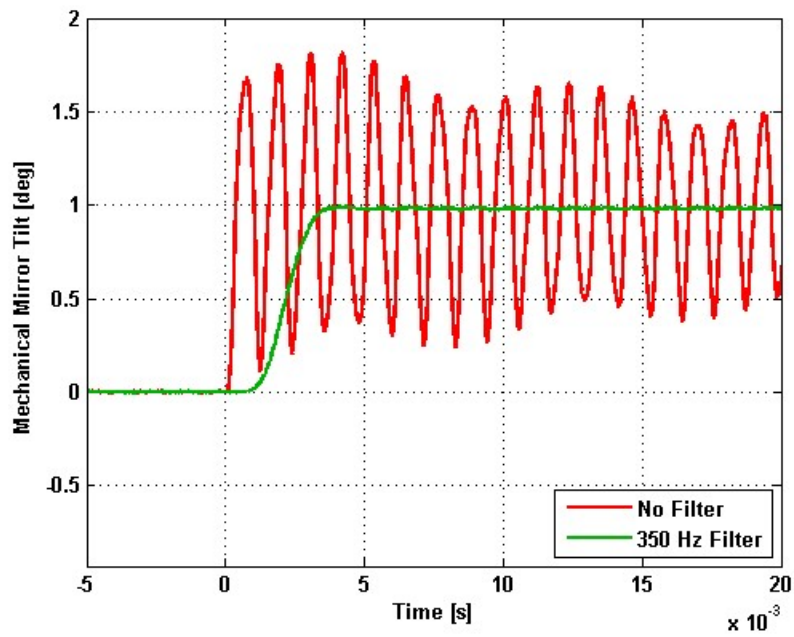


Step Response

X-Axis Step Response

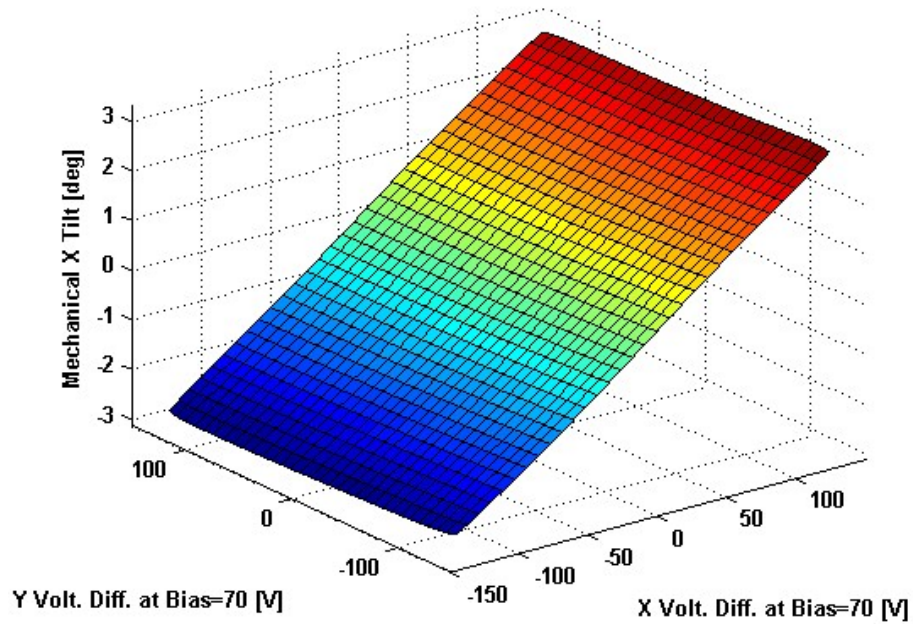


Y-Axis Step Response

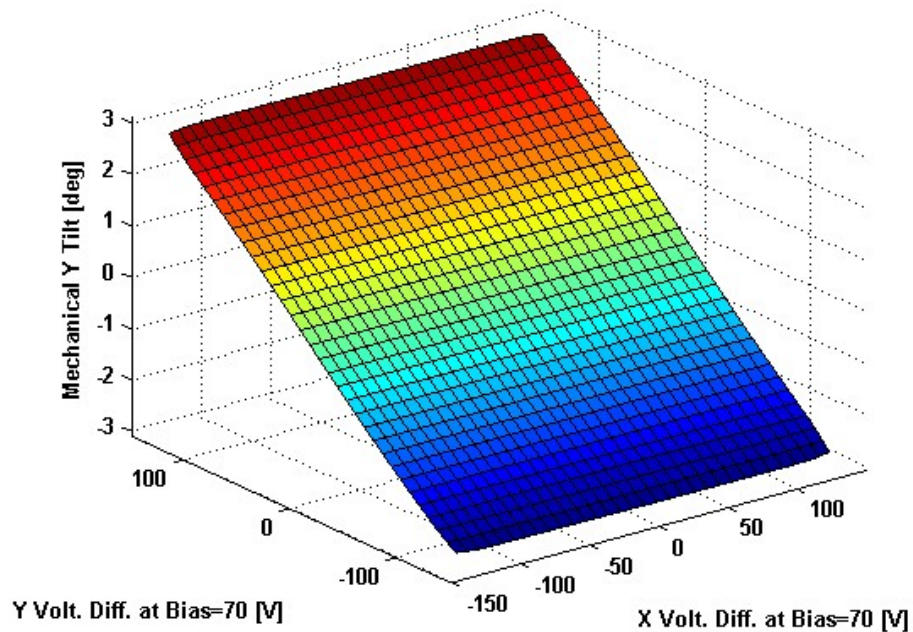


2D Lookup Tables

Voltage vs. X Angle - Lookup Table



Voltage vs. Y Angle - Lookup Table



Y Angle vs. X Angle - Addressable Angles

