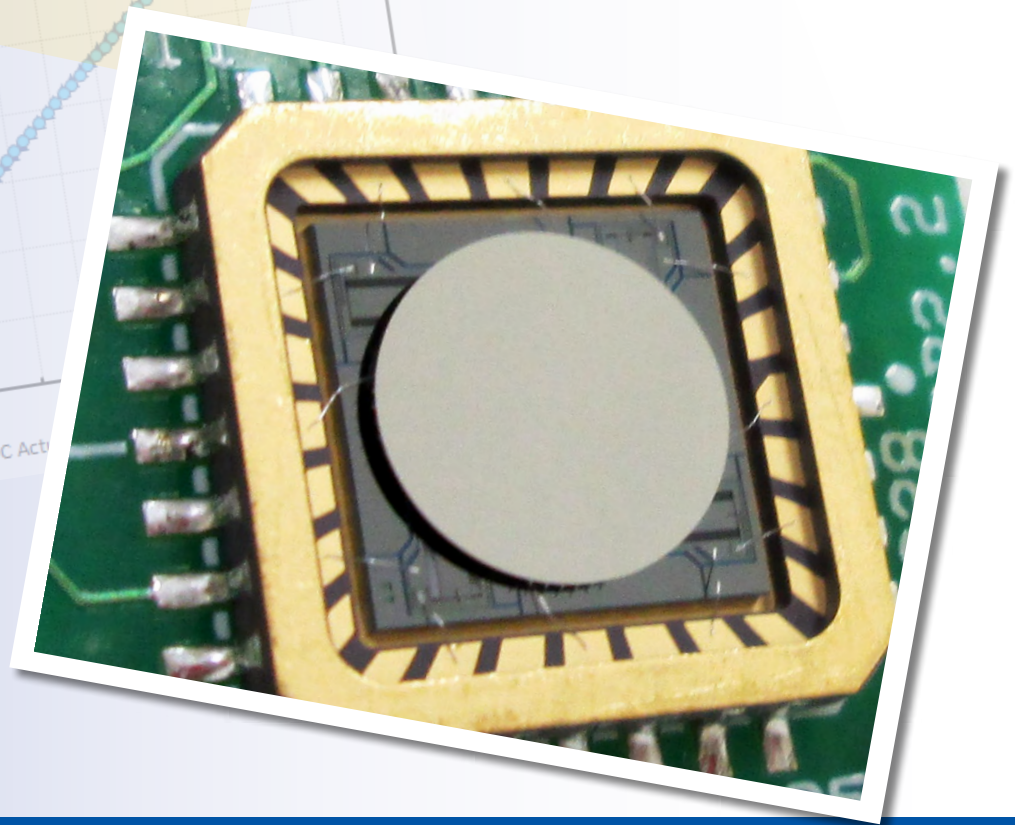
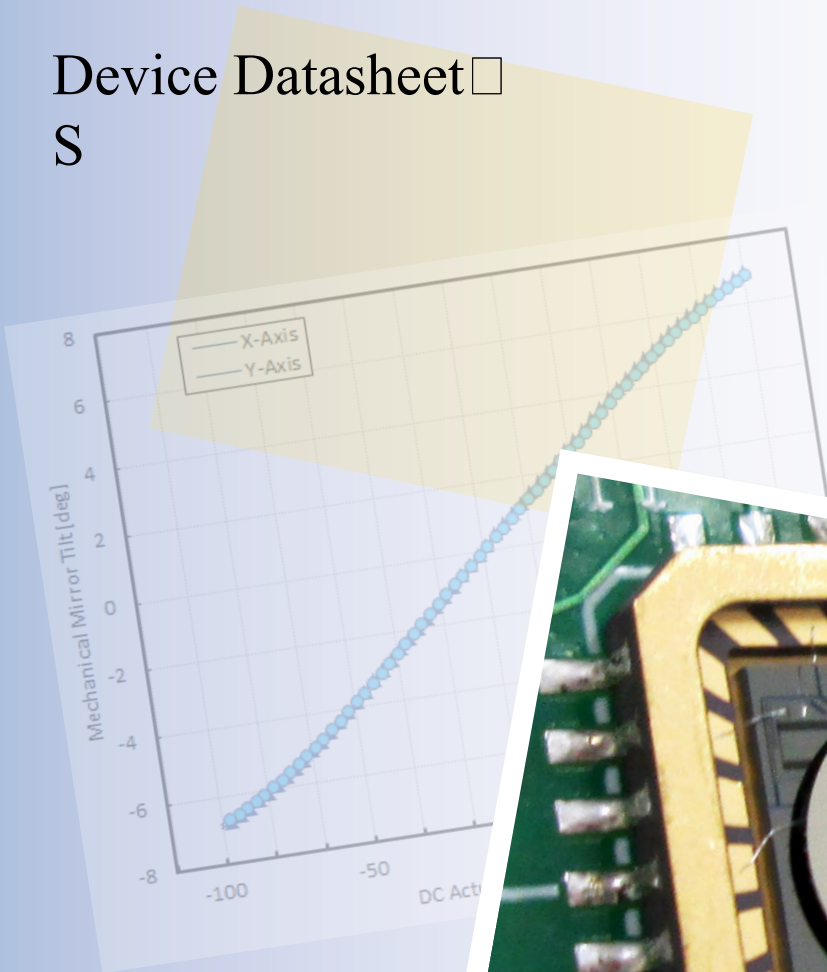


Gimbal-Less Two-Axis Scanning MEMS Micromirrors

Device Datasheet

S



Device Parameters Summary

Device ID : S3602

Actuator Type : A1B1.4

Mirror Type and Size : Bonded mirror of 3.0mm diameter

Mirror Coating : Aluminum

Maximum Angle - X Axis [degrees] : 2.9220

Maximum Angle - Y Axis [degrees] : 2.8763

Maximum Voltage - X Axis [V] : 137

Maximum Voltage - Y Axis [V] : 137

Bias Voltage [V] : 70

Maximum Angle - Coupled Axes [degrees] : 3.4784

Resonant Frequency - X Axis [Hz] : 679

Resonant Frequency - Y Axis [Hz] : 662

Quality Factor- X Axis : 15

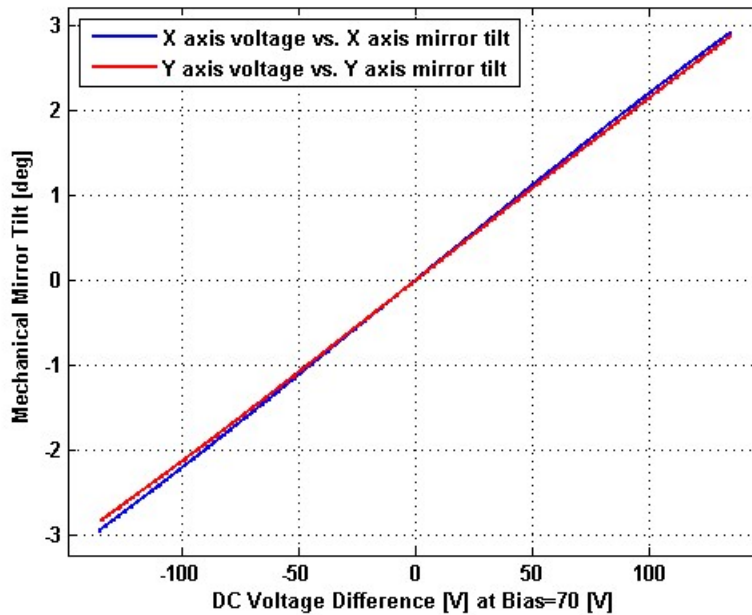
Quality Factor - Y Axis : 36

Recommended LPF Cutoff Frequency (6th Order Bessel) : 280

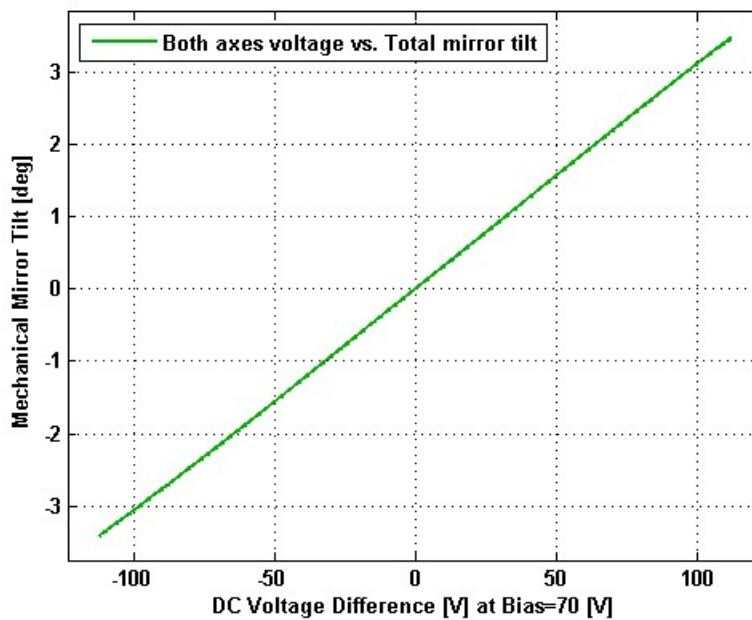
Date and Time Report was Created: 25-Feb-2014 at 16:1:47

Static Response

Voltage vs. Angle - Individual Axes

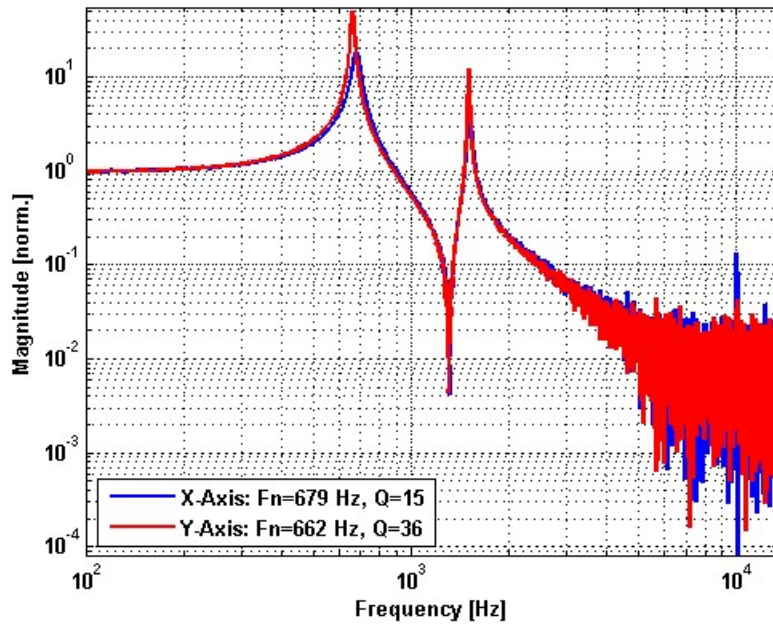


Voltage vs. Angle - Coupled Axes

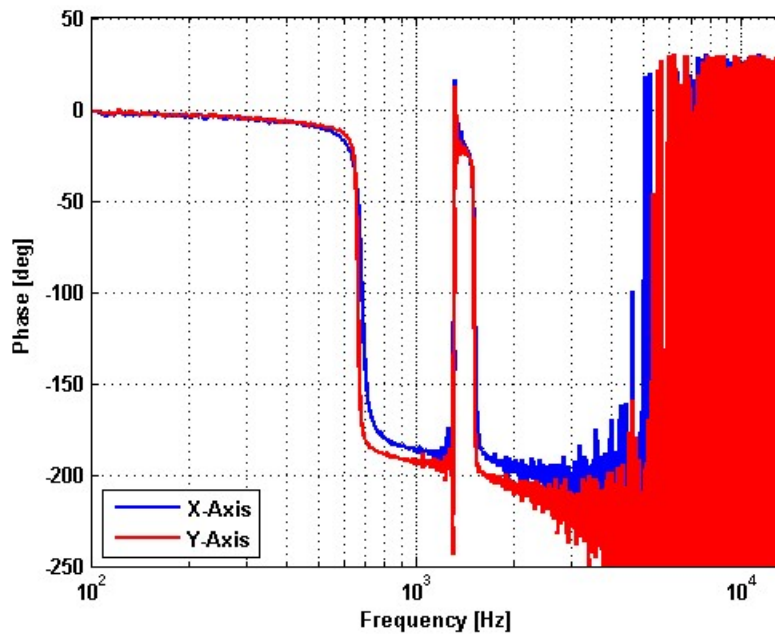


Frequency Response

Small Signal Frequency Response - Magnitude

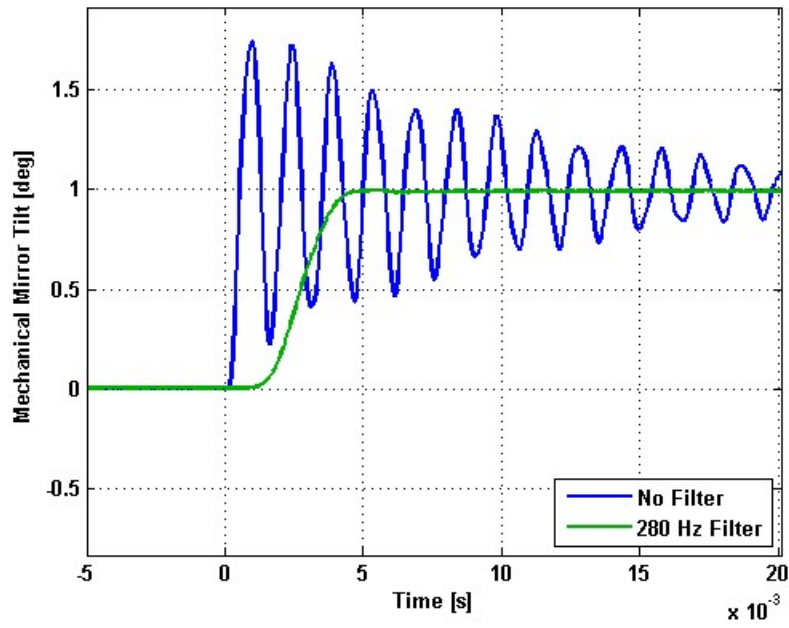


Small Signal Frequency Response - Phase

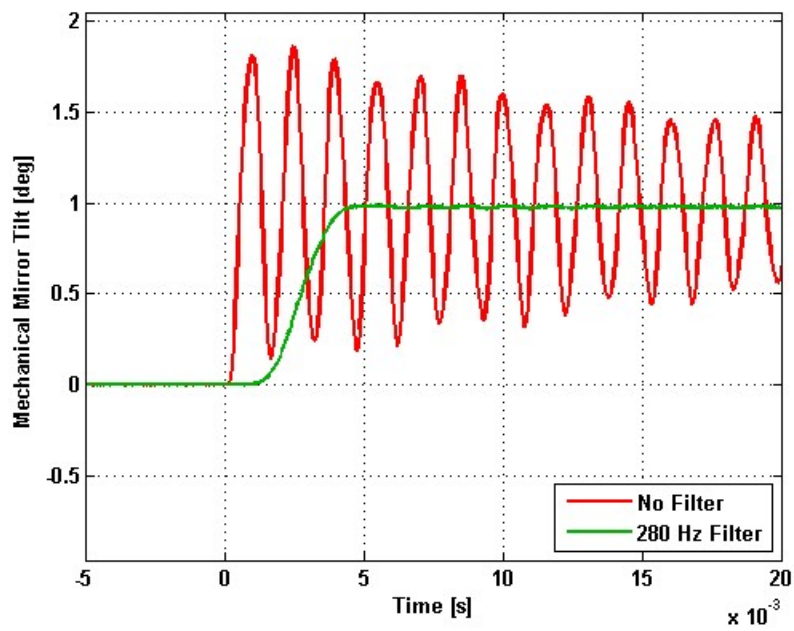


Step Response

X-Axis Step Response

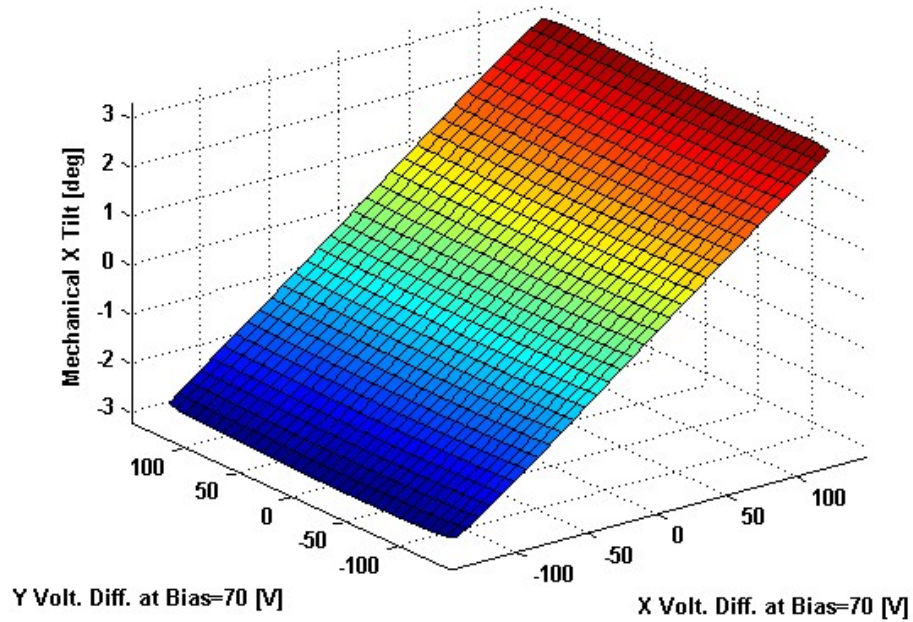


Y-Axis Step Response

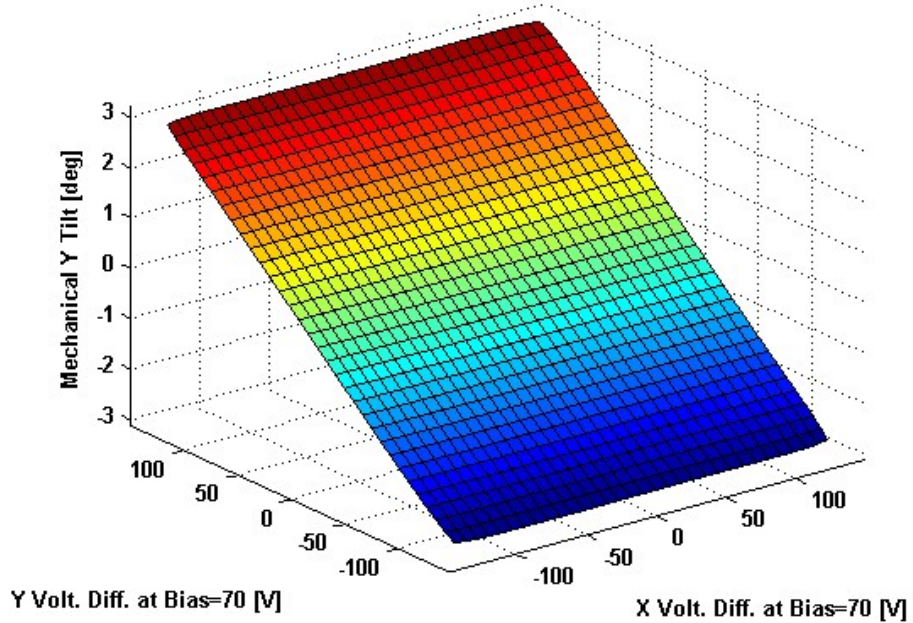


2D Lookup Tables

Voltage vs. X Angle - Lookup Table



Voltage vs. Y Angle - Lookup Table



Y Angle vs. X Angle - Addressable Angles

