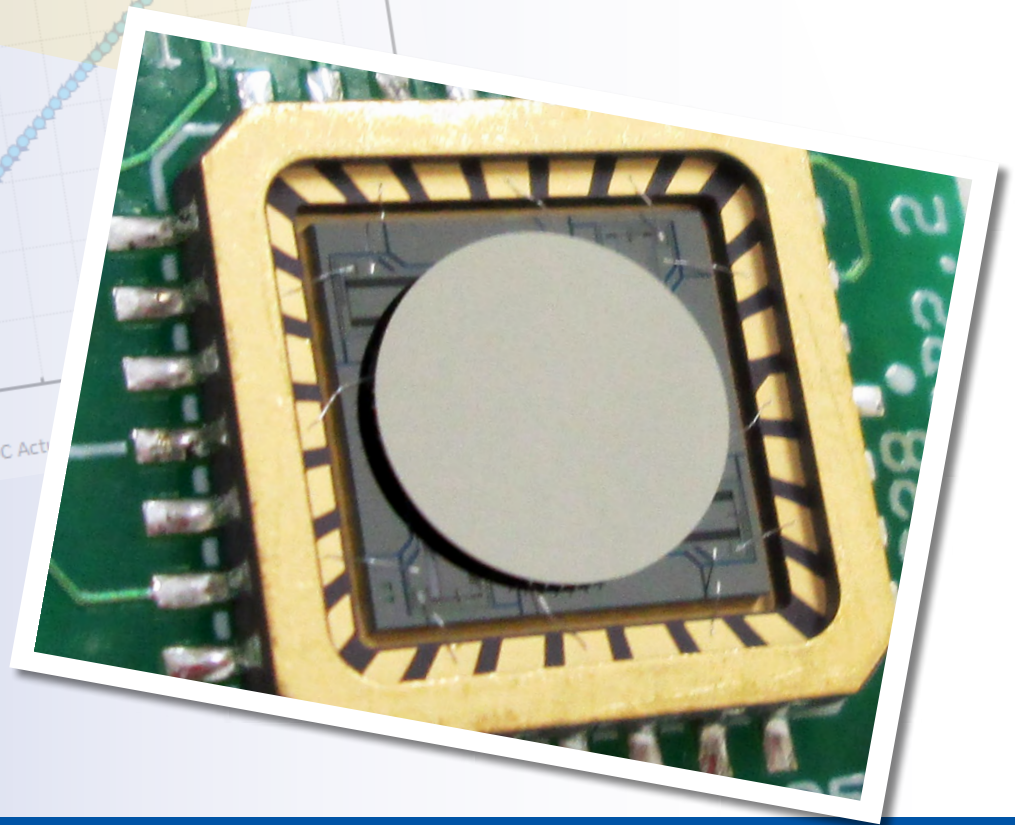
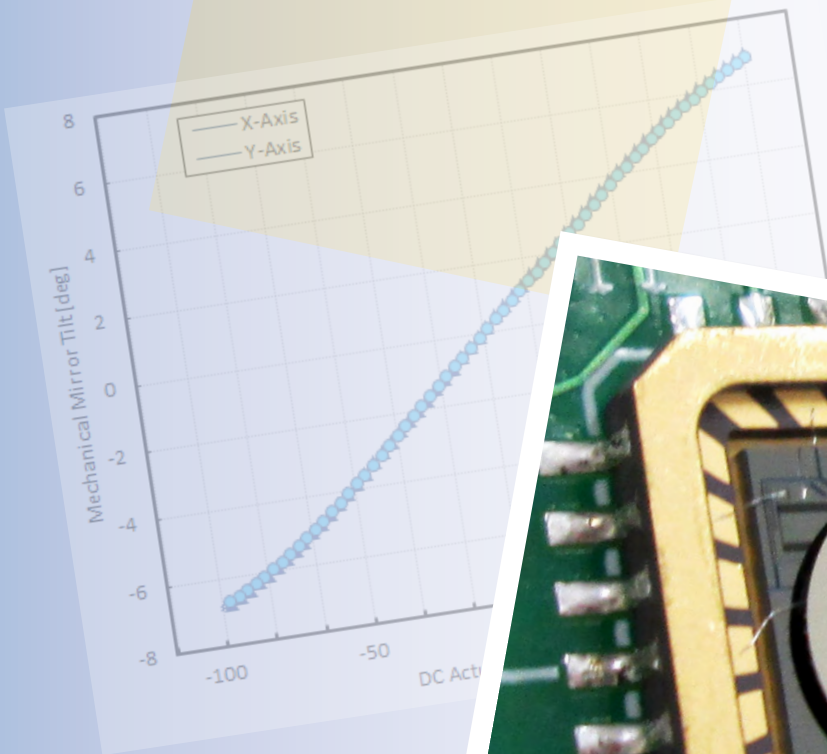


Gimbal-Less Two-Axis Scanning MEMS Micromirrors

Device Datasheet
S3601



Device Parameters Summary

Device ID : S3601

Actuator Type : A1B1.4

Mirror Type and Size : Bonded mirror of 3.6mm diameter

Mirror Coating : Aluminum

Maximum Angle - X Axis [degrees] : 2.9733

Maximum Angle - Y Axis [degrees] : 2.8842

Maximum Voltage - X Axis [V] : 137

Maximum Voltage - Y Axis [V] : 137

Bias Voltage [V] : 70

Maximum Angle - Coupled Axes [degrees] : 3.5091

Resonant Frequency - X Axis [Hz] : 469

Resonant Frequency - Y Axis [Hz] : 466

Quality Factor- X Axis : 23

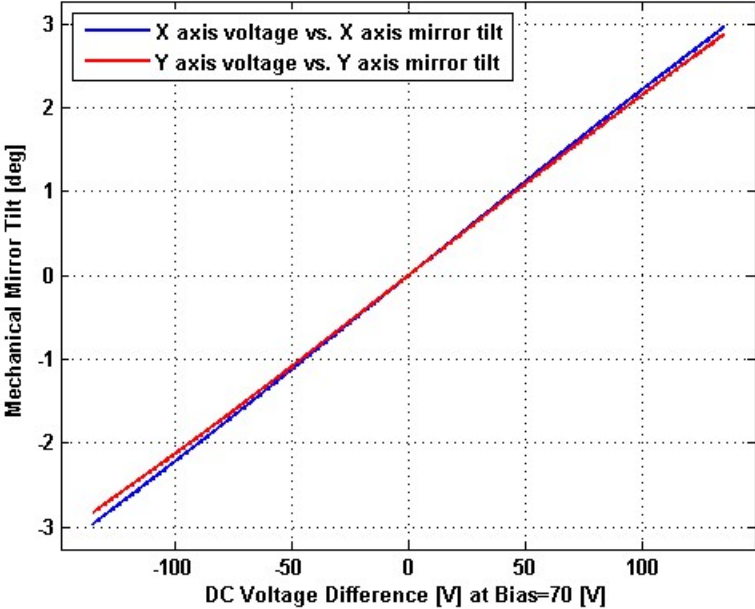
Quality Factor - Y Axis : 23

Recommended LPF Cutoff Frequency (6th Order Bessel) : 180

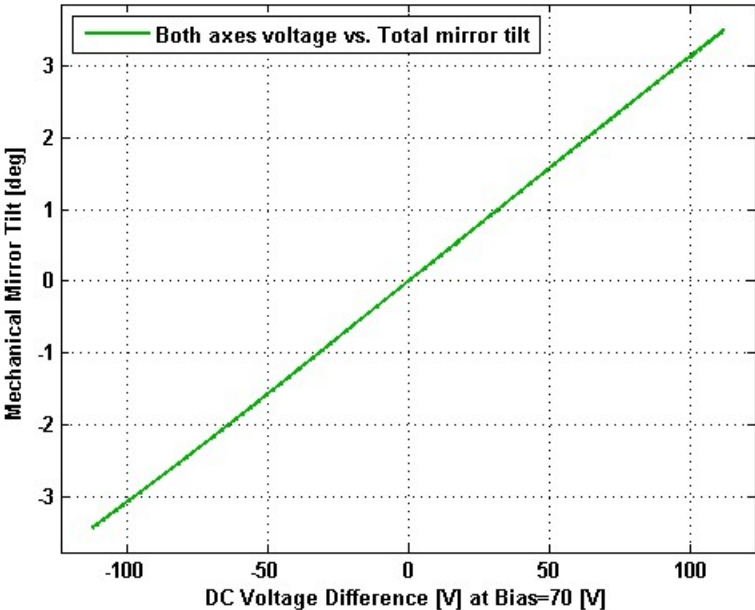
Date and Time Report was Created: 25-Feb-2014 at 15:55:45

Static Response

Voltage vs. Angle - Individual Axes

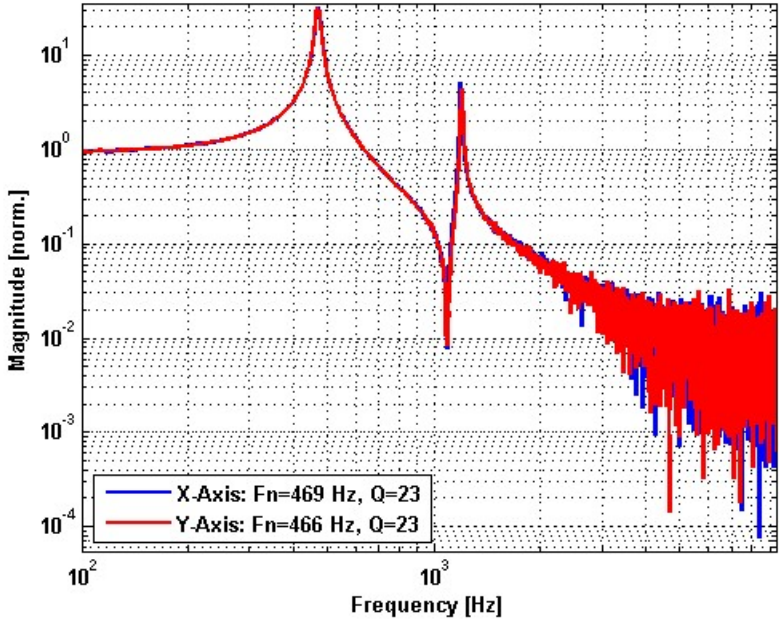


Voltage vs. Angle - Coupled Axes

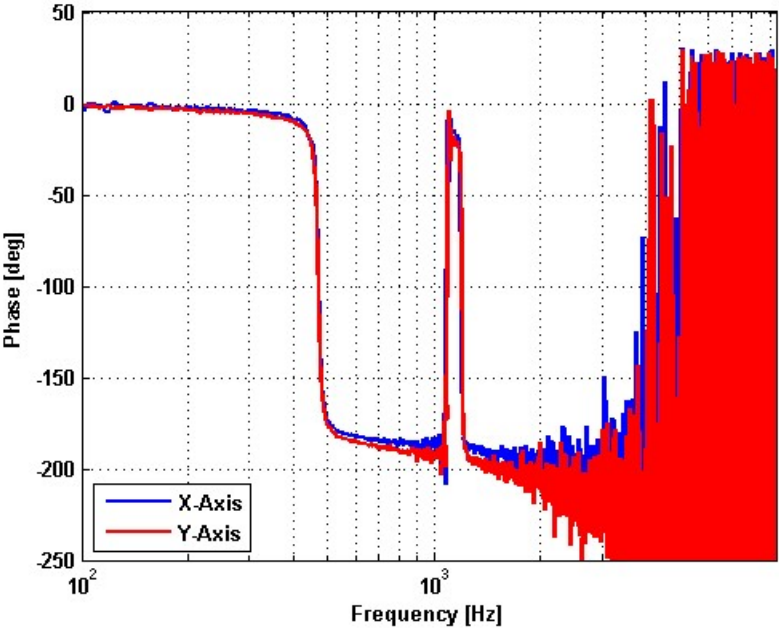


Frequency Response

Small Signal Frequency Response - Magnitude

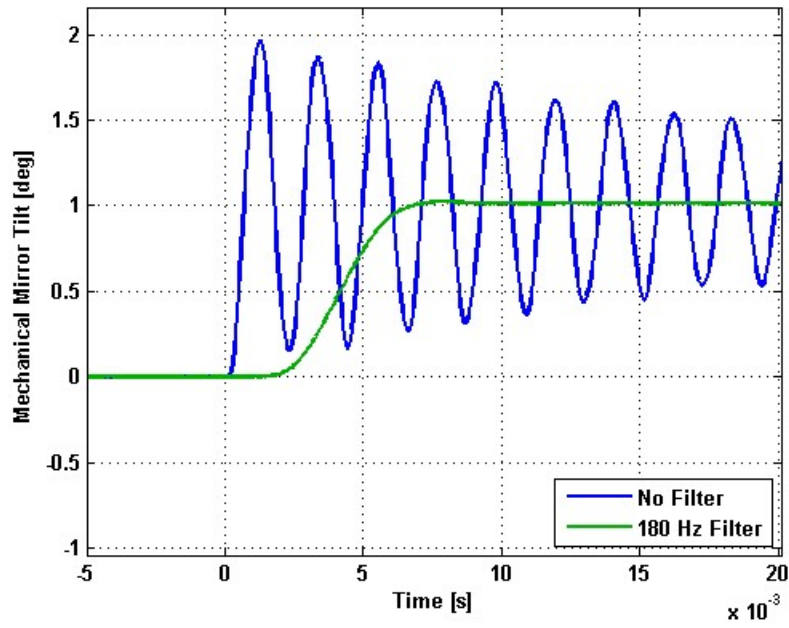


Small Signal Frequency Response - Phase

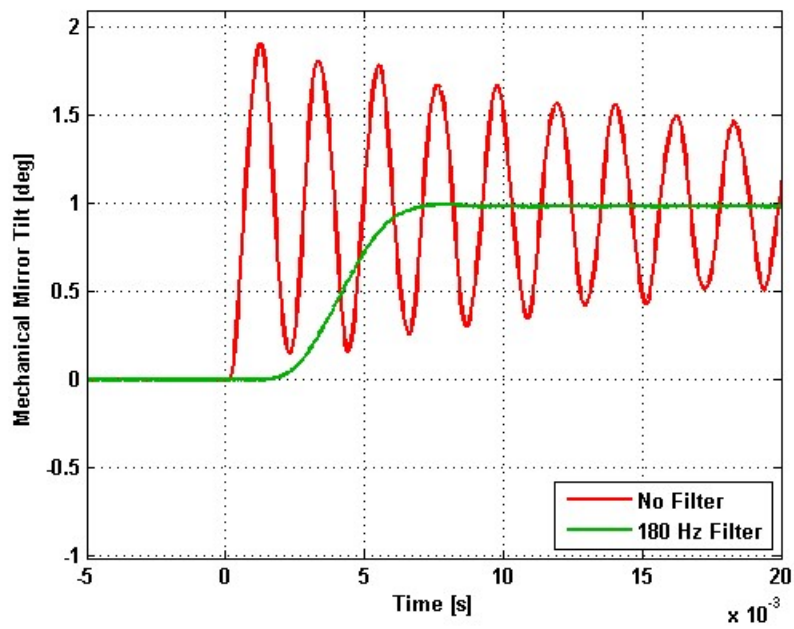


Step Response

X-Axis Step Response

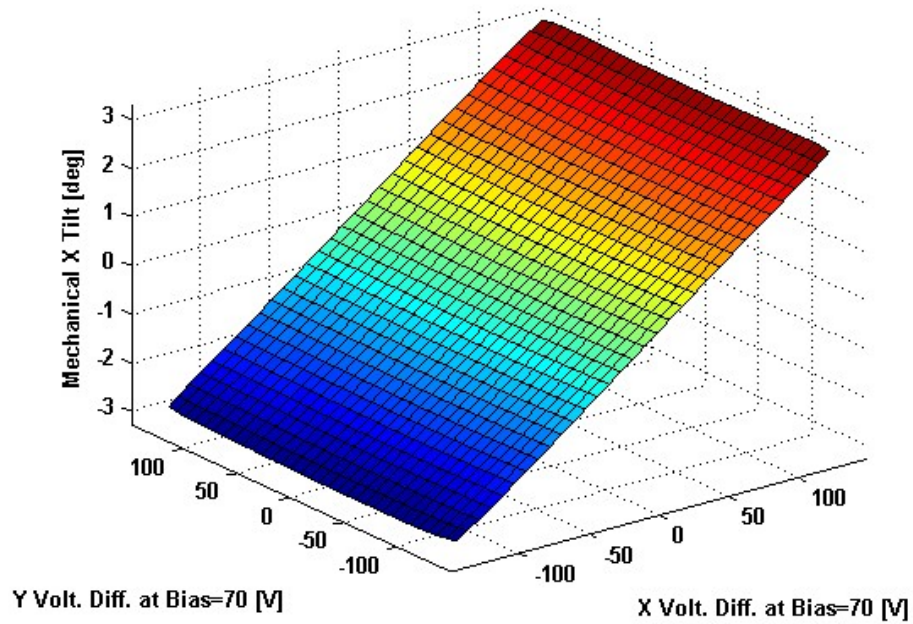


Y-Axis Step Response

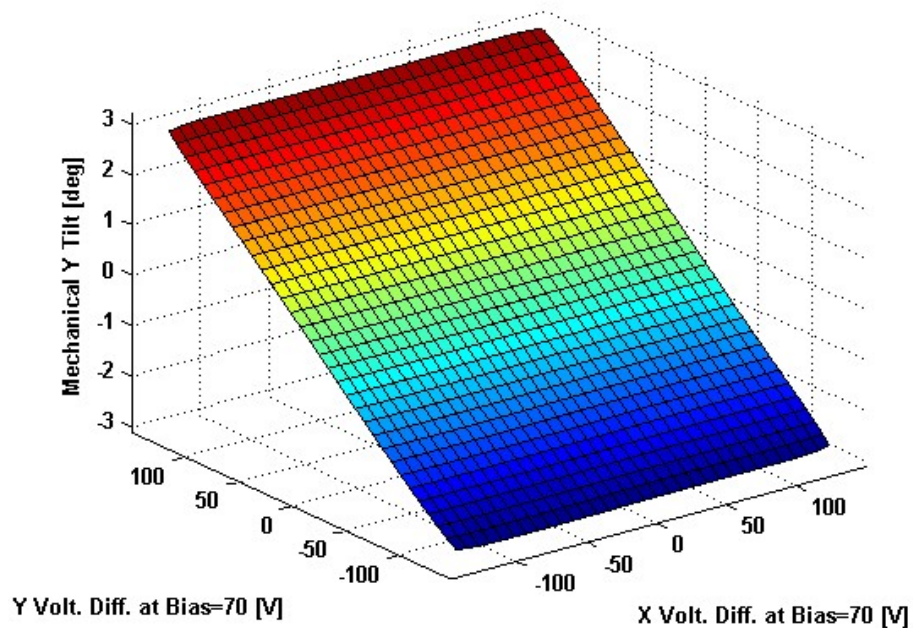


2D Lookup Tables

Voltage vs. X Angle - Lookup Table



Voltage vs. Y Angle - Lookup Table



Y Angle vs. X Angle - Addressable Angles

