
Device Parameters Summary

Device ID : S2899

Actuator Type : A1B2.2

Mirror Type and Size : Bonded mirror of 2.0mm diameter

Mirror Coating : Gold

Maximum Angle - X Axis [degrees] : 4.7672

Maximum Angle - Y Axis [degrees] : 4.7485

Maximum Voltage - X Axis [V] : 120

Maximum Voltage - Y Axis [V] : 120

Bias Voltage [V] : 70

Maximum Angle - Coupled Axes [degrees] : 6.0516

Resonant Frequency - X Axis [Hz] : 717

Resonant Frequency - Y Axis [Hz] : 720

Quality Factor- X Axis : 65

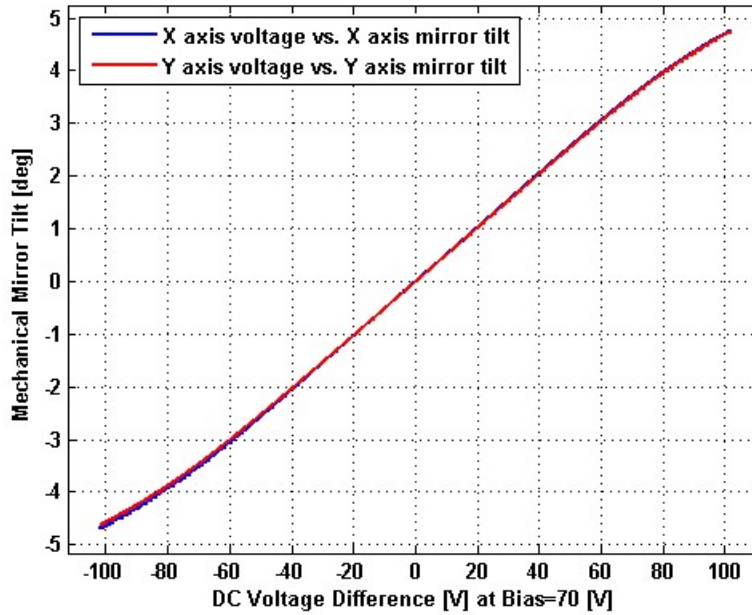
Quality Factor - Y Axis : 66

Recommended LPF Cutoff Frequency (6th Order Bessel) : 300

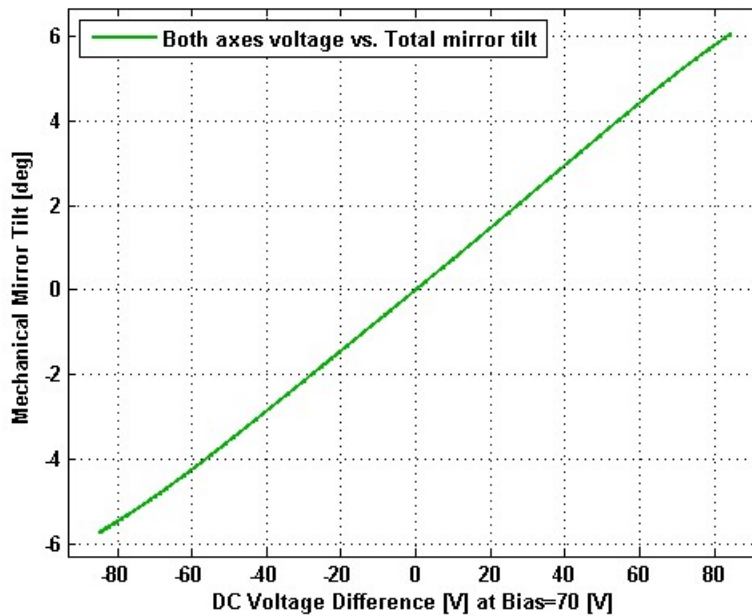
Date and Time Report was Created: 07-Nov-2013 at 16:36:53

Static Response

Voltage vs. Angle - Individual Axes

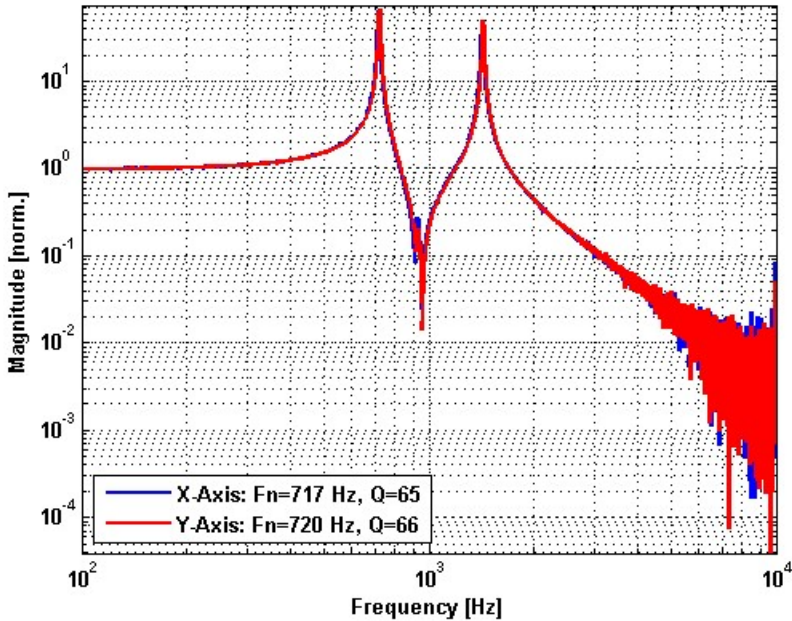


Voltage vs. Angle - Coupled Axes

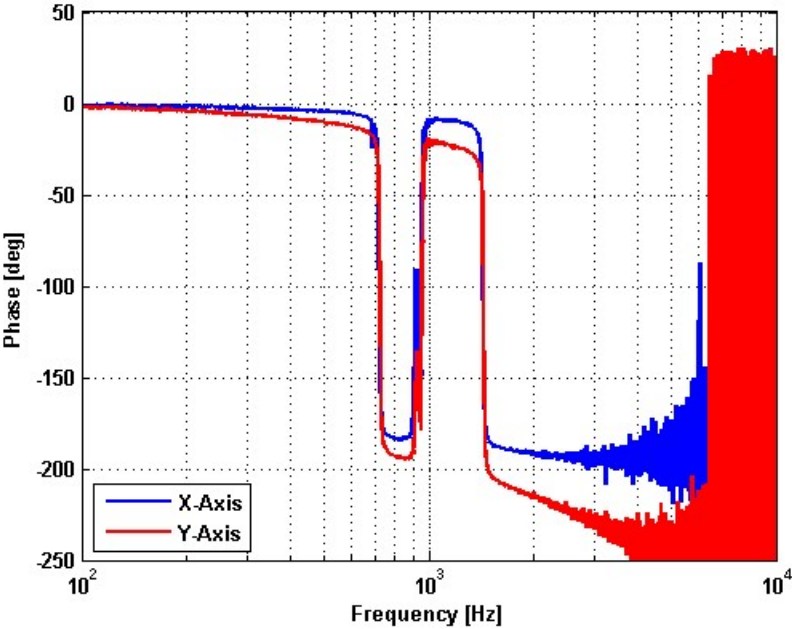


Frequency Response

Small Signal Frequency Response - Magnitude

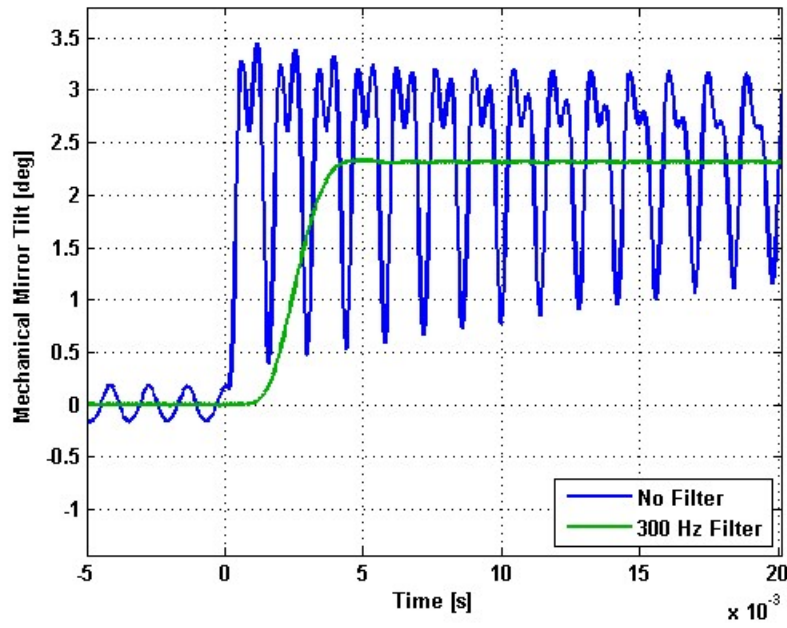


Small Signal Frequency Response - Phase

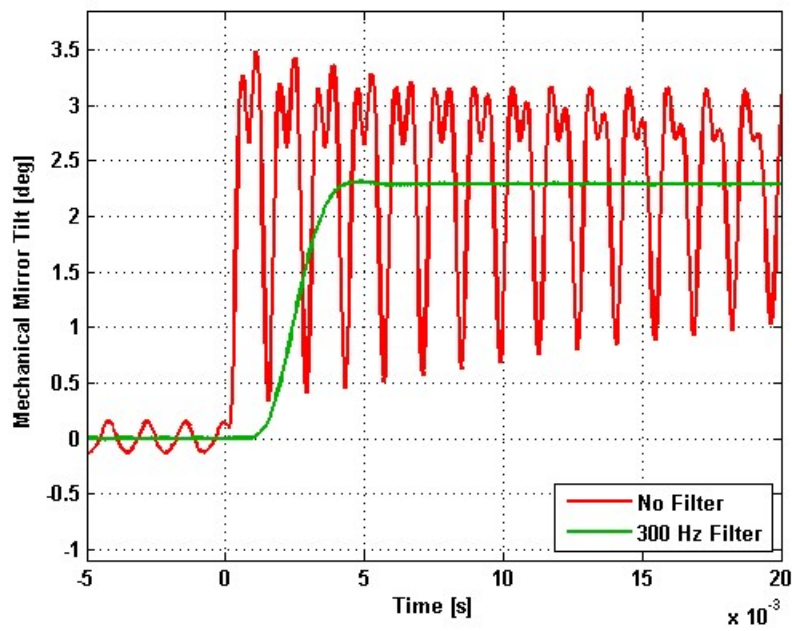


Step Response

X-Axis Step Response

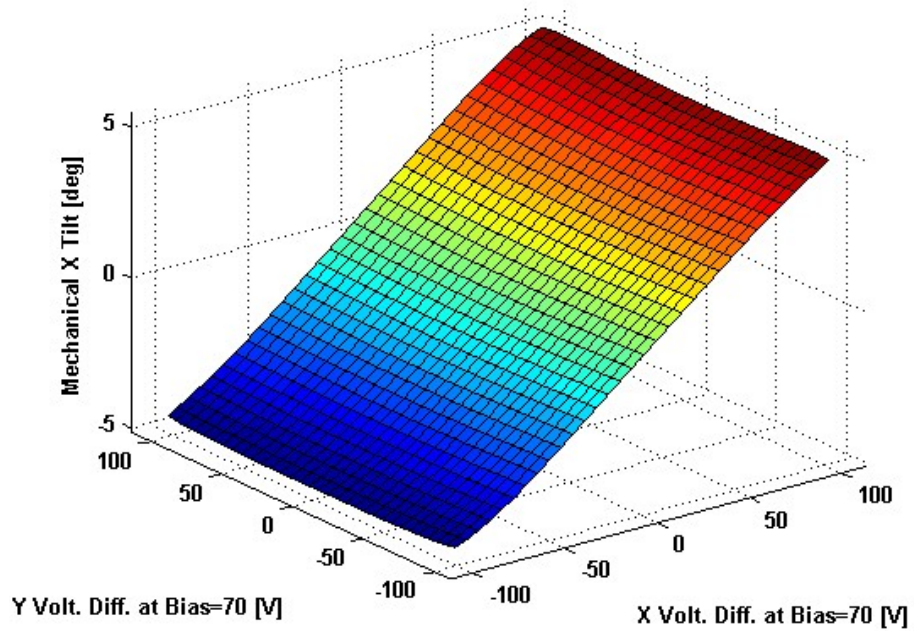


Y-Axis Step Response

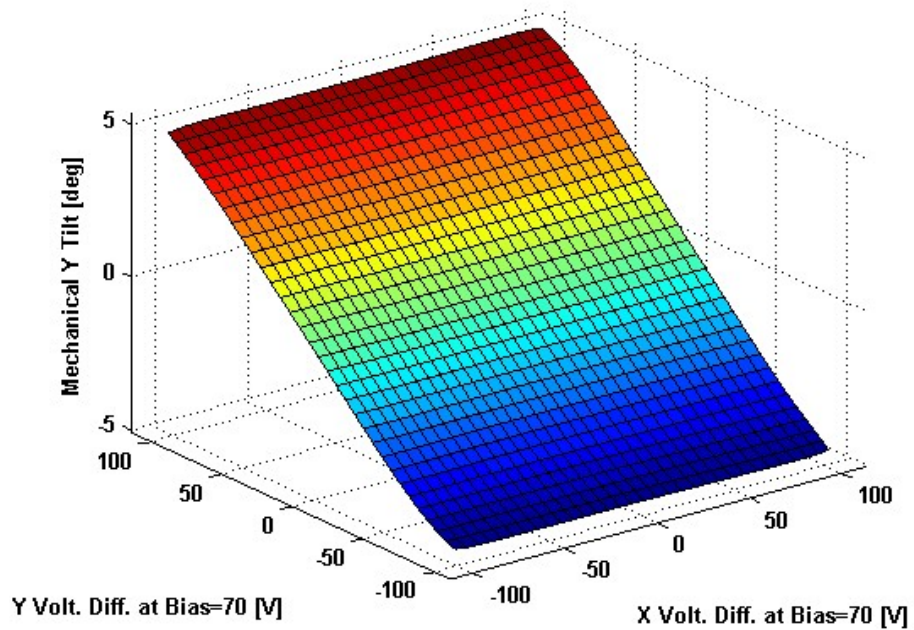


2D Lookup Tables

Voltage vs. X Angle - Lookup Table



Voltage vs. Y Angle - Lookup Table



Y Angle vs. X Angle - Addressable Angles

