



---

# Device Parameters Summary

**Device ID** : S2625

**Actuator Type** : A1B2.2

**Mirror Type and Size** : Bonded mirror of 3.0mm diameter

**Mirror Coating** : Gold

**Maximum Angle - X Axis [degrees]** : 4.6772

**Maximum Angle - Y Axis [degrees]** : 5.0810

**Maximum Voltage - X Axis [V]** : 126

**Maximum Voltage - Y Axis [V]** : 122

**Bias Voltage [V]** : 70

**Maximum Angle - Coupled Axes [degrees]** : 6.1690

**Resonant Frequency - X Axis [Hz]** : 437

**Resonant Frequency - Y Axis [Hz]** : 442

**Quality Factor- X Axis** : 22

**Quality Factor - Y Axis** : 13

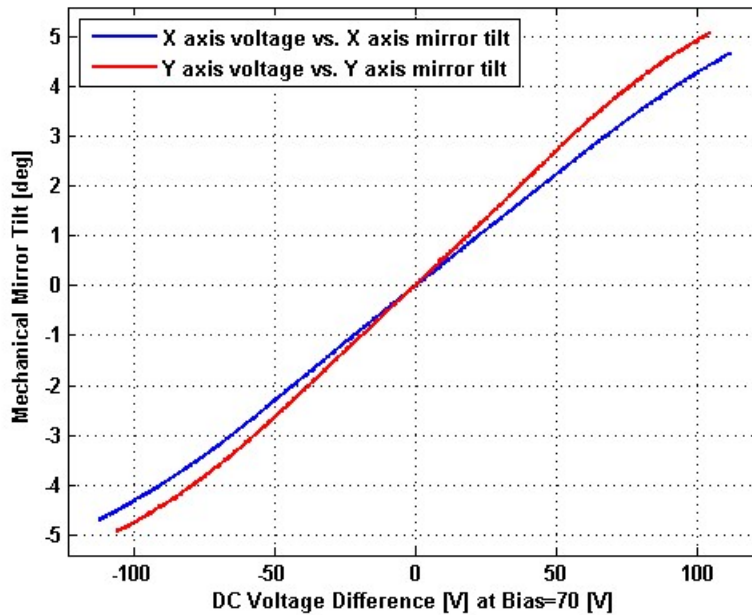
**Recommended LPF Cutoff Frequency (6th Order Bessel)** : 160

**Date and Time Report was Created:** 03-Jun-2013 at 21:54:34

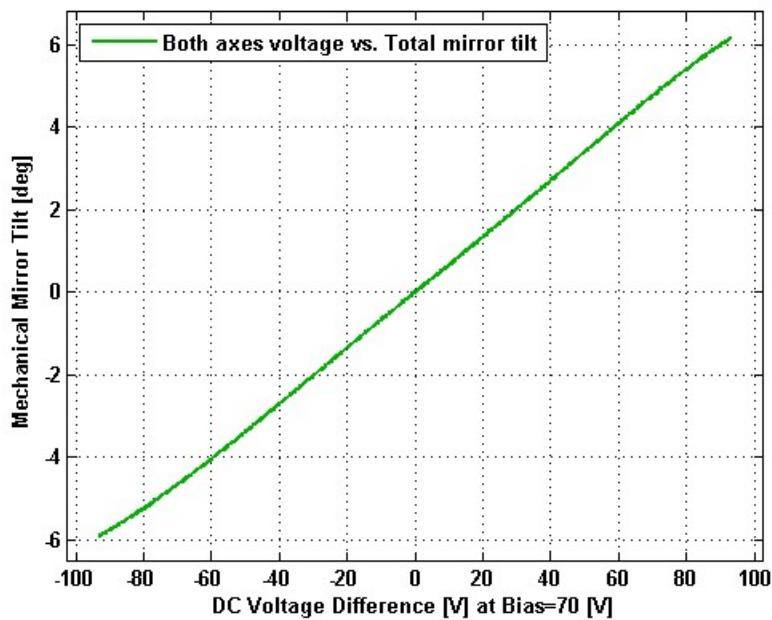
---

# Static Response

## Voltage vs. Angle - Individual Axes



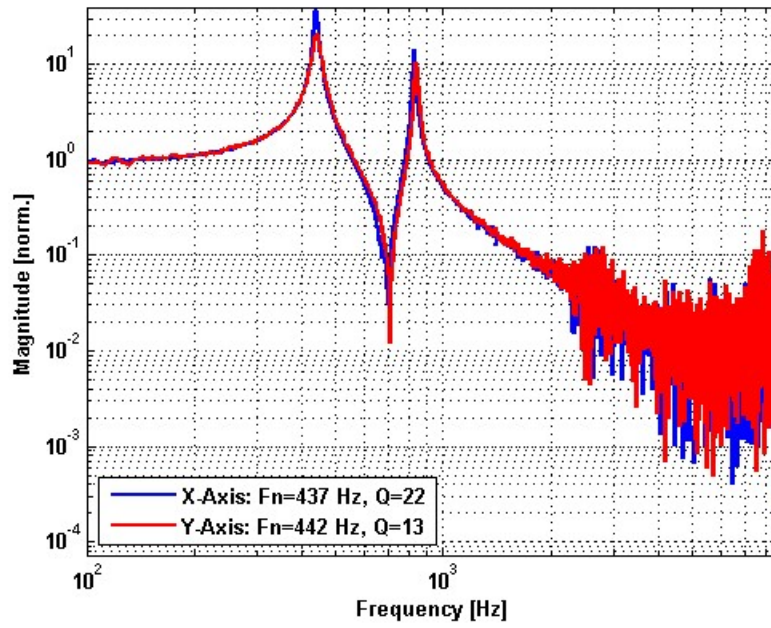
## Voltage vs. Angle - Coupled Axes



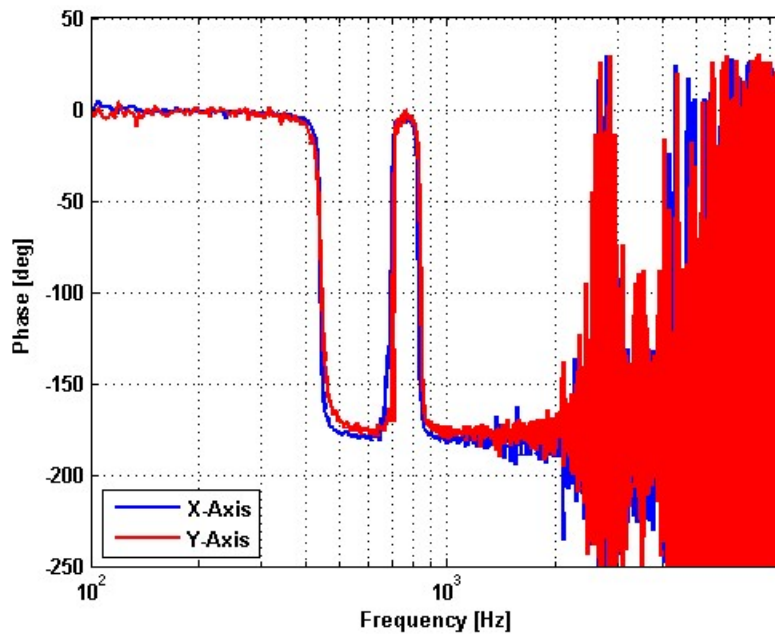
---

# Frequency Response

## Small Signal Frequency Response - Magnitude



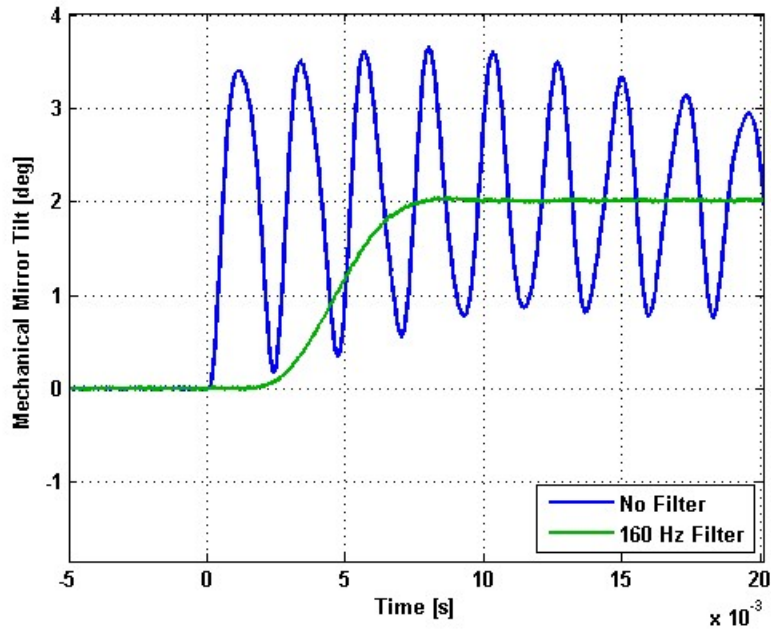
## Small Signal Frequency Response - Phase



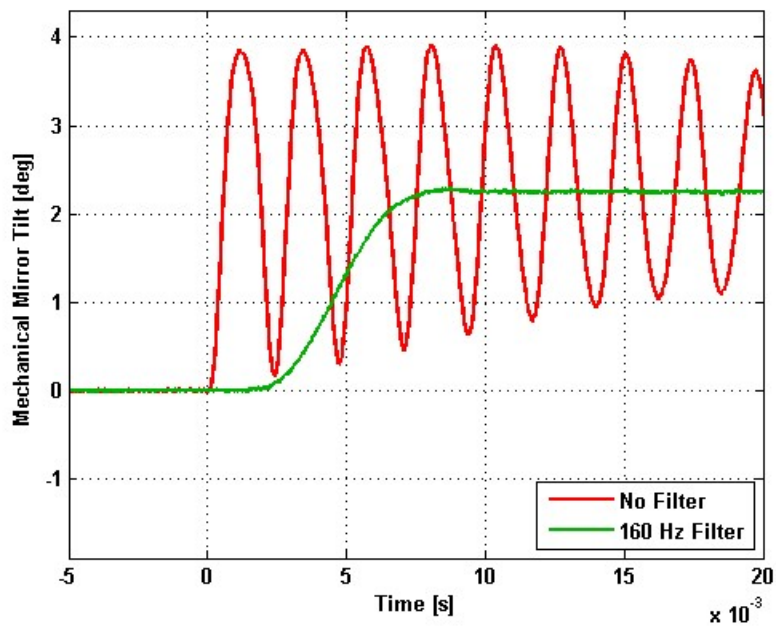
---

# Step Response

## X-Axis Step Response



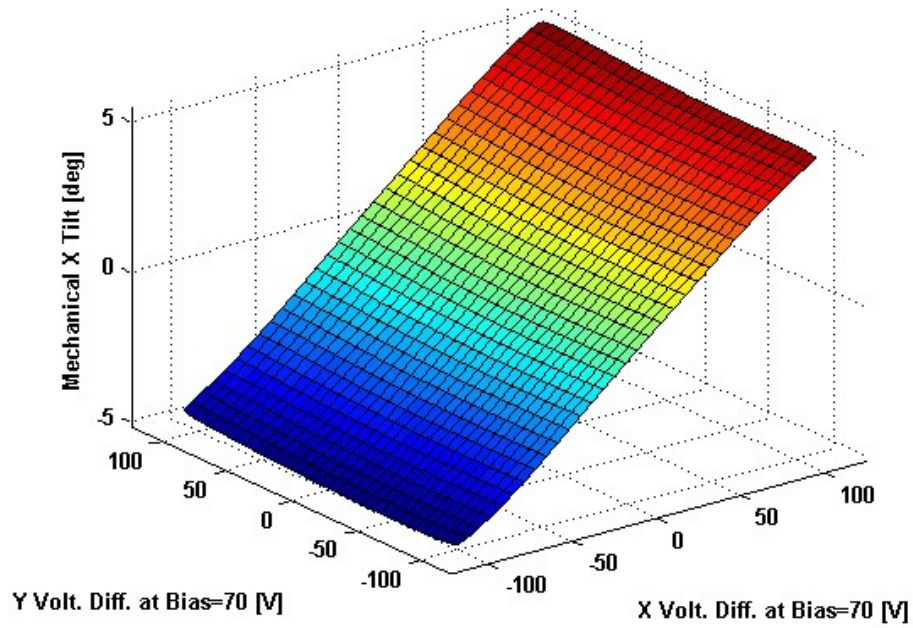
## Y-Axis Step Response



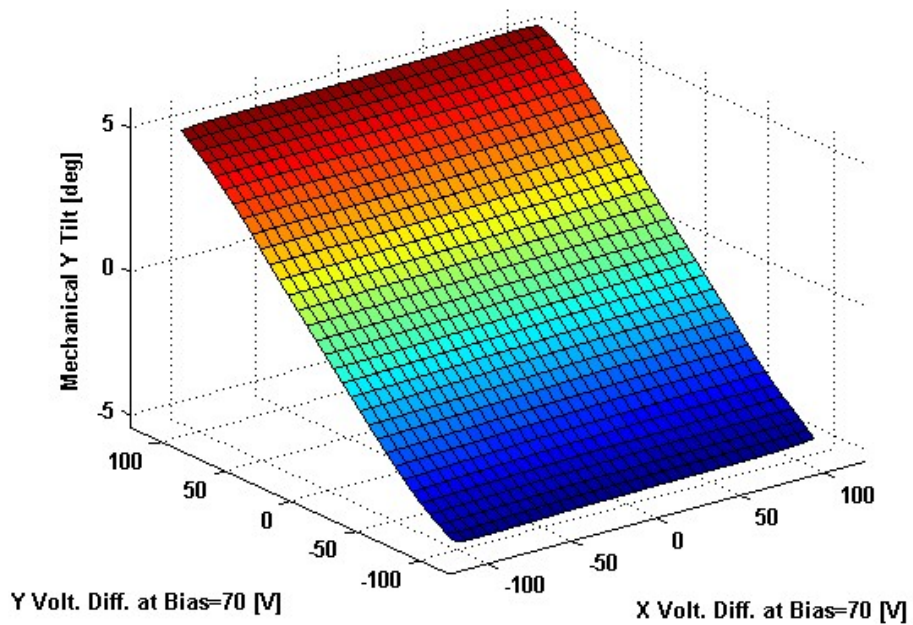
---

# 2D Lookup Tables

## Voltage vs. X Angle - Lookup Table



## Voltage vs. Y Angle - Lookup Table



# Y Angle vs. X Angle - Addressable Angles

