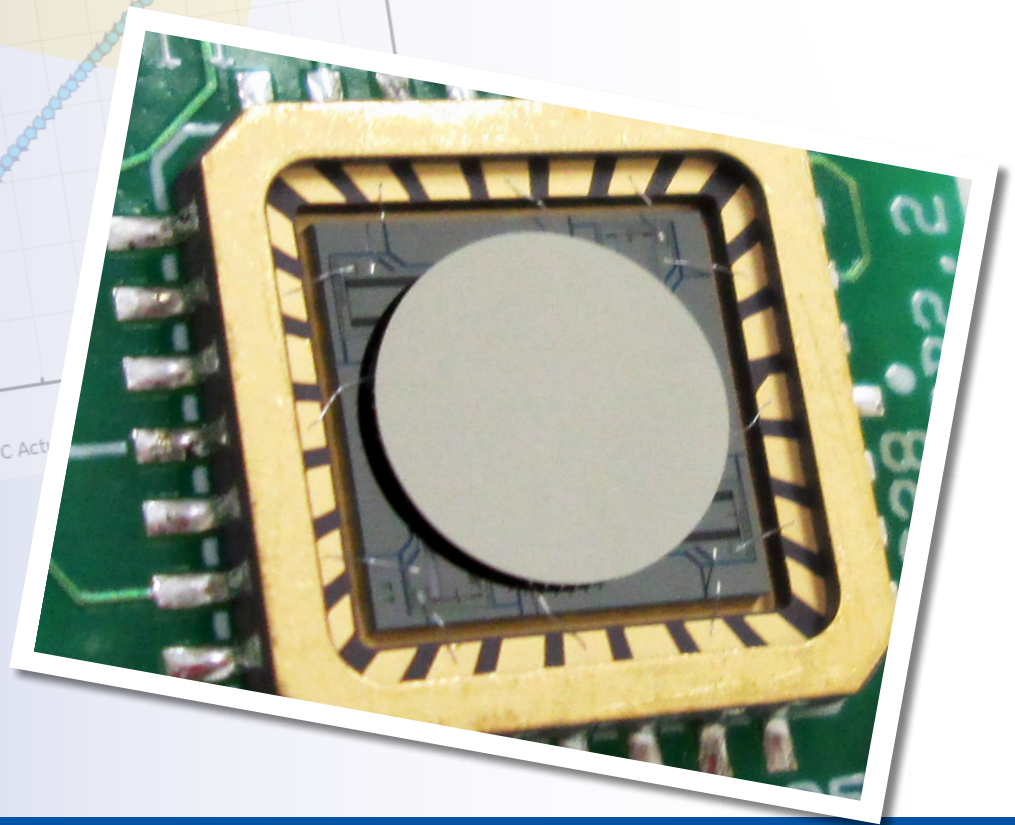
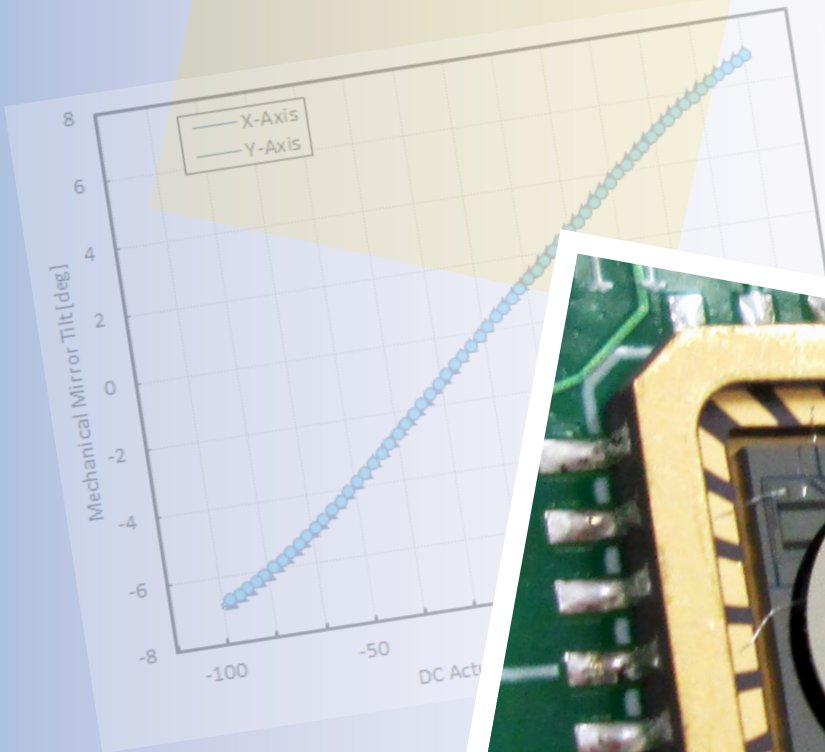


Gimbal-Less Two-Axis Scanning MEMS Micromirrors

Device Datasheet
S2087



Device Parameters Summary

Device ID : S2087

Actuator Type : A1B2.2

Mirror Type and Size : Bonded mirror of 3.6mm diameter

Mirror Coating : Aluminum

Maximum Angle - X Axis [degrees] : 5.0624

Maximum Angle - Y Axis [degrees] : 5.1527

Maximum Voltage - X Axis [V] : 132

Maximum Voltage - Y Axis [V] : 132

Bias Voltage [V] : 70

Maximum Angle - Coupled Axes [degrees] : 6.4833

Resonant Frequency - X Axis [Hz] : 339

Resonant Frequency - Y Axis [Hz] : 337

Quality Factor- X Axis : 15

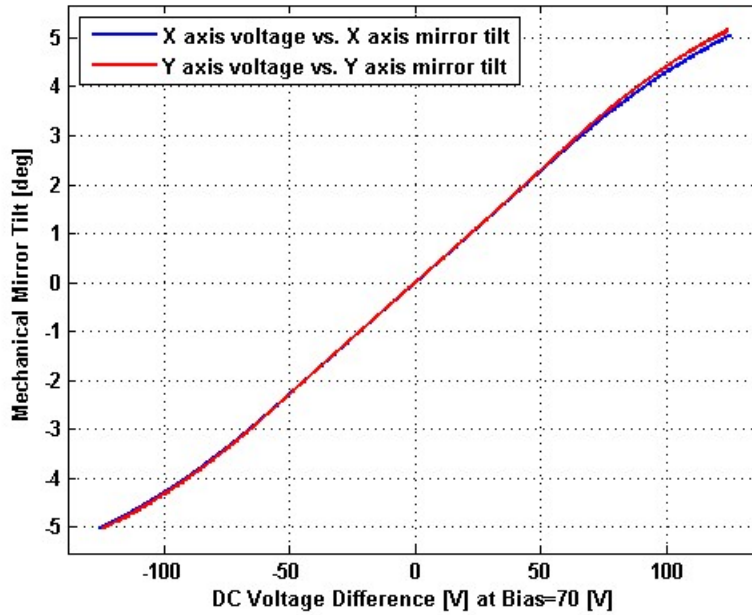
Quality Factor - Y Axis : 14

Recommended LPF Cutoff Frequency (6th Order Bessel) : 120

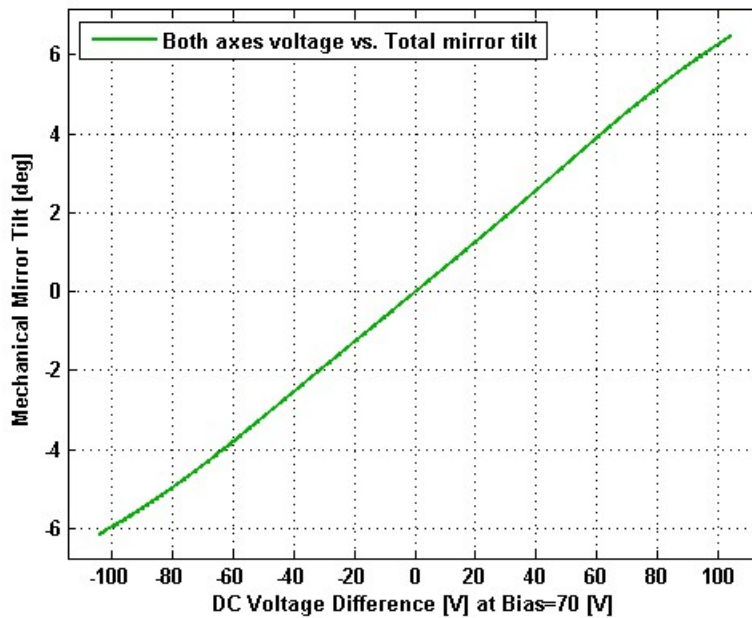
Date and Time Report was Created: 22-Feb-2013 at 16:3:8

Static Response

Voltage vs. Angle - Individual Axes

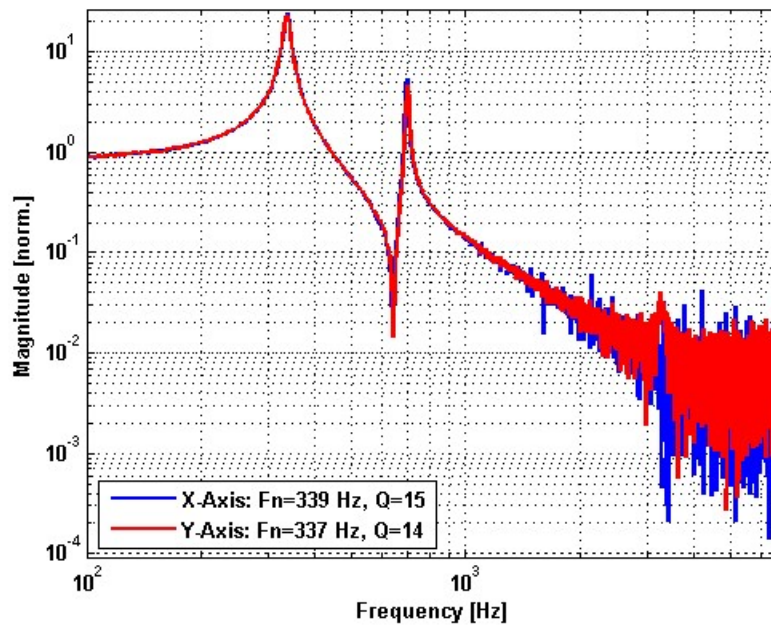


Voltage vs. Angle - Coupled Axes

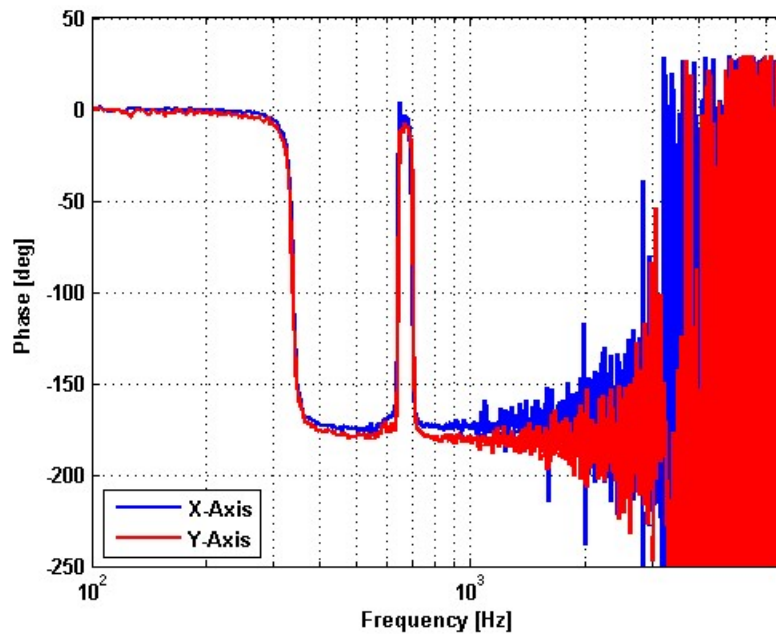


Frequency Response

Small Signal Frequency Response - Magnitude

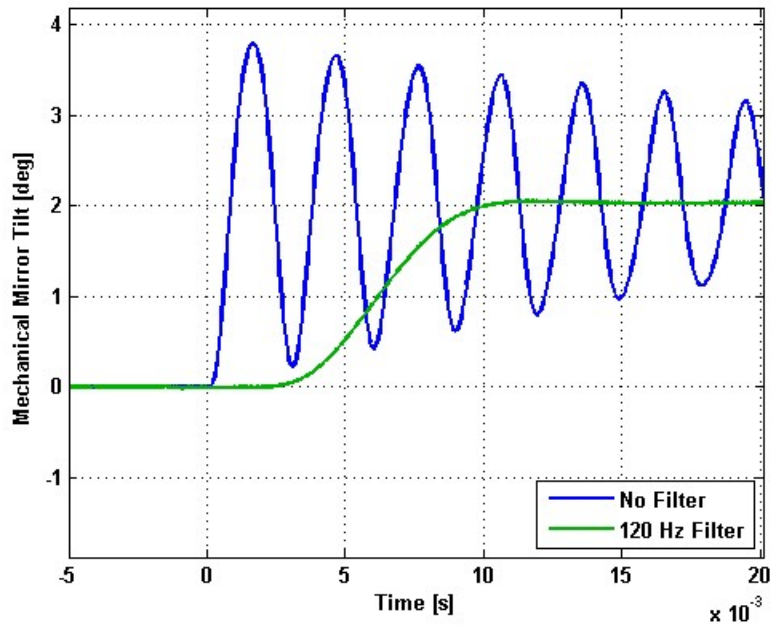


Small Signal Frequency Response - Phase

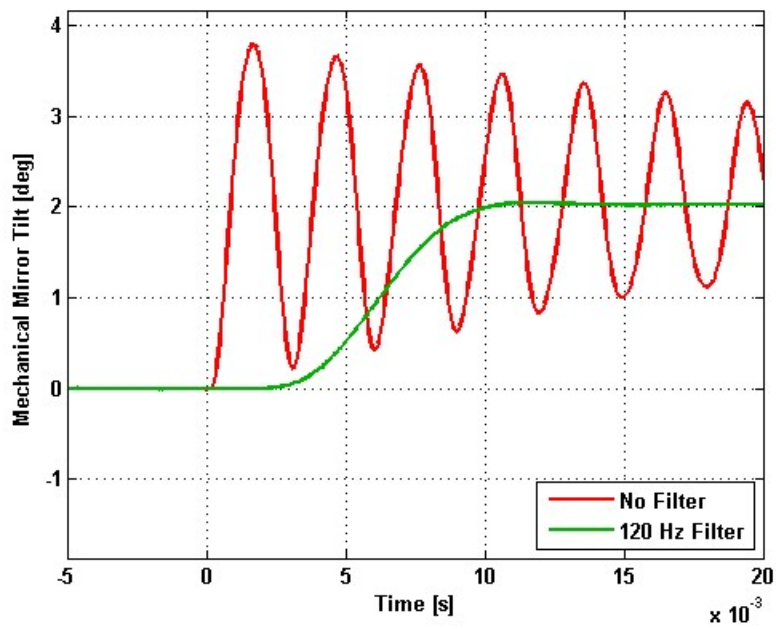


Step Response

X-Axis Step Response

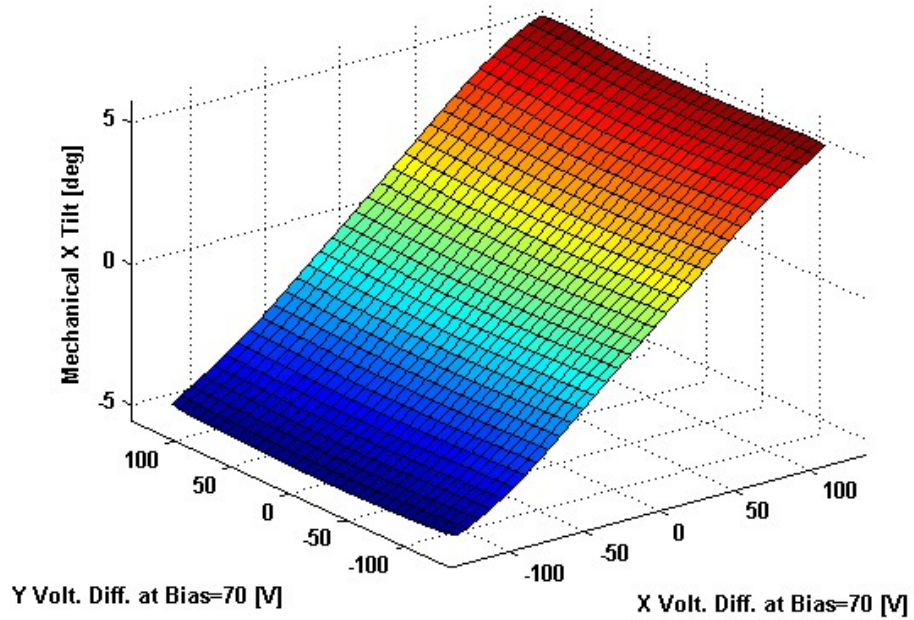


Y-Axis Step Response

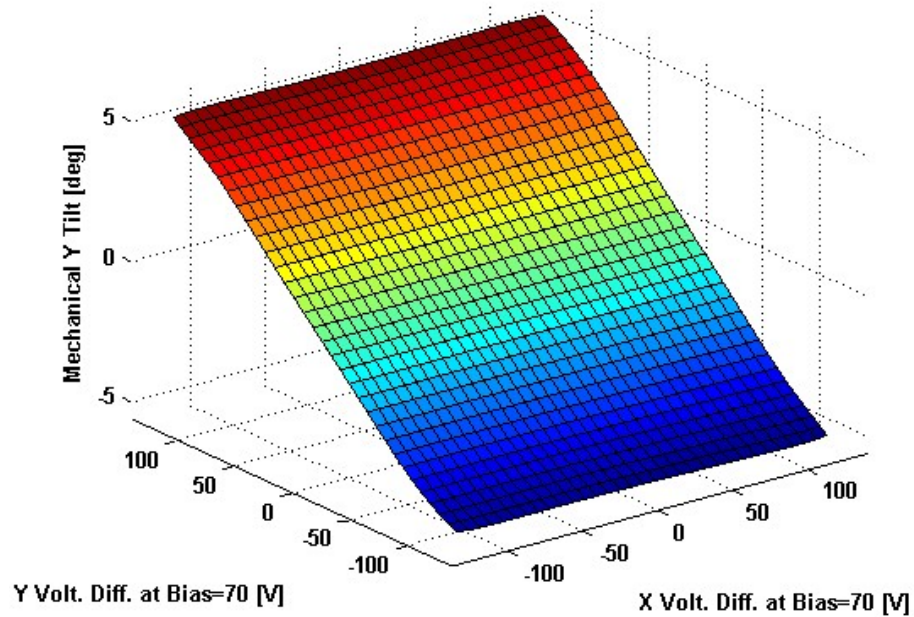


2D Lookup Tables

Voltage vs. X Angle - Lookup Table



Voltage vs. Y Angle - Lookup Table



Y Angle vs. X Angle - Addressable Angles

