
Device Parameters Summary

Device ID : S3955

Actuator Type : A1B2.4

Mirror Type and Size : Bonded mirror of 3.0mm diameter

Mirror Coating : Aluminum

Maximum Angle - X Axis [degrees] : 4.2953

Maximum Angle - Y Axis [degrees] : 4.4660

Maximum Voltage - X Axis [V] : 133

Maximum Voltage - Y Axis [V] : 133

Bias Voltage [V] : 70

Maximum Angle - Coupled Axes [degrees] : 5.3714

Resonant Frequency - X Axis [Hz] : 575

Resonant Frequency - Y Axis [Hz] : 579

Quality Factor- X Axis : 38

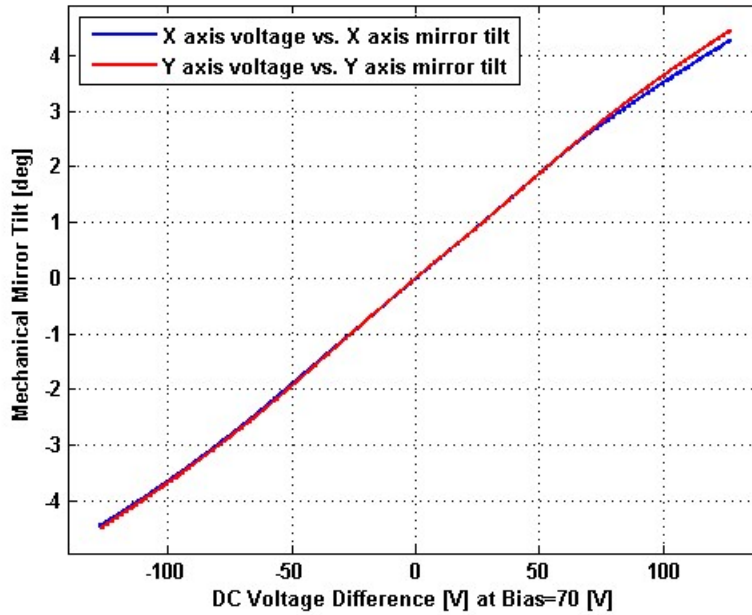
Quality Factor - Y Axis : 44

Recommended LPF Cutoff Frequency (6th Order Bessel) : 200

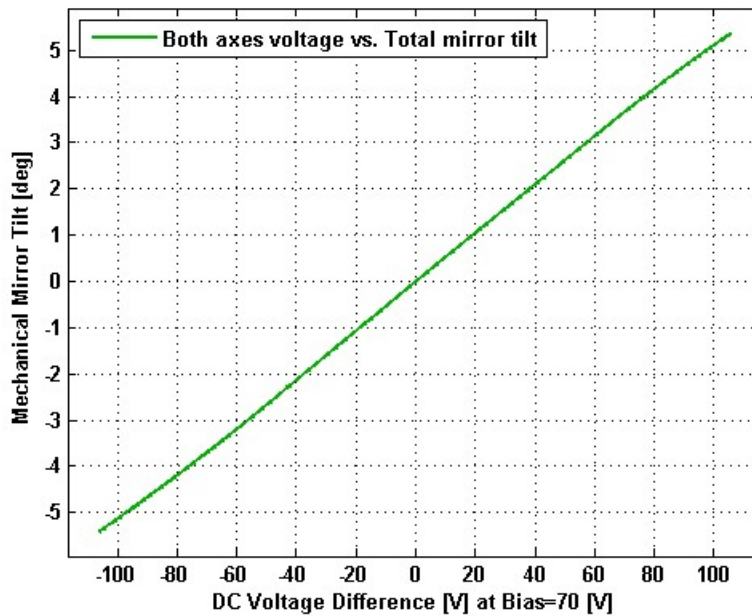
Date and Time Report was Created: 17-Jul-2014 at 15:31:17

Static Response

Voltage vs. Angle - Individual Axes

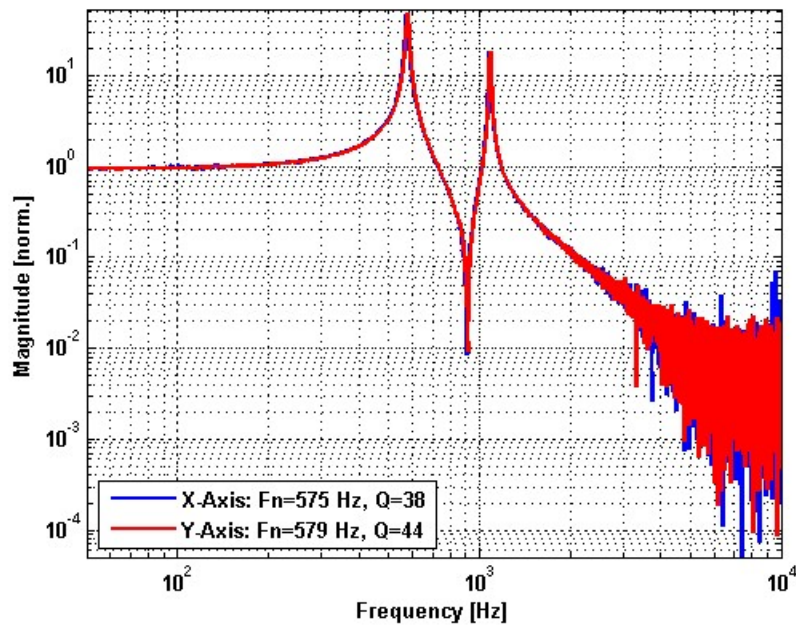


Voltage vs. Angle - Coupled Axes

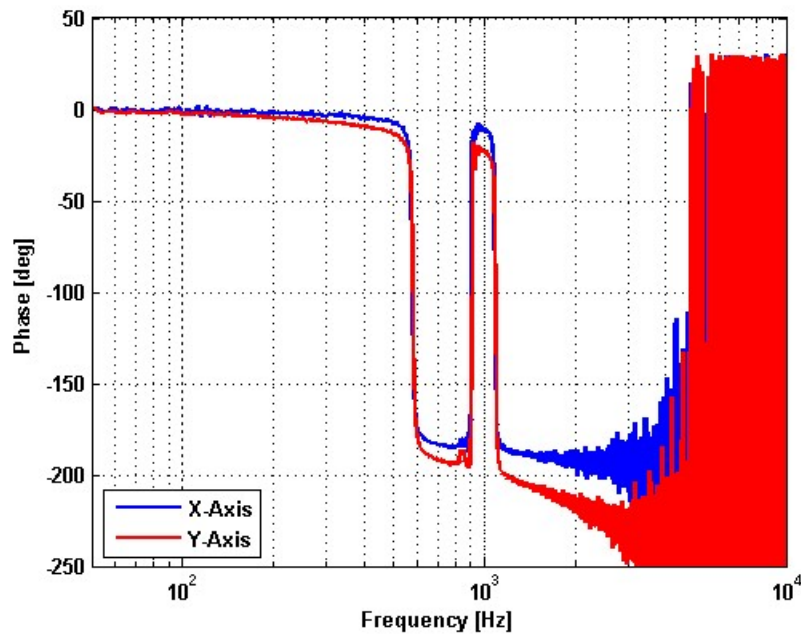


Frequency Response

Small Signal Frequency Response - Magnitude

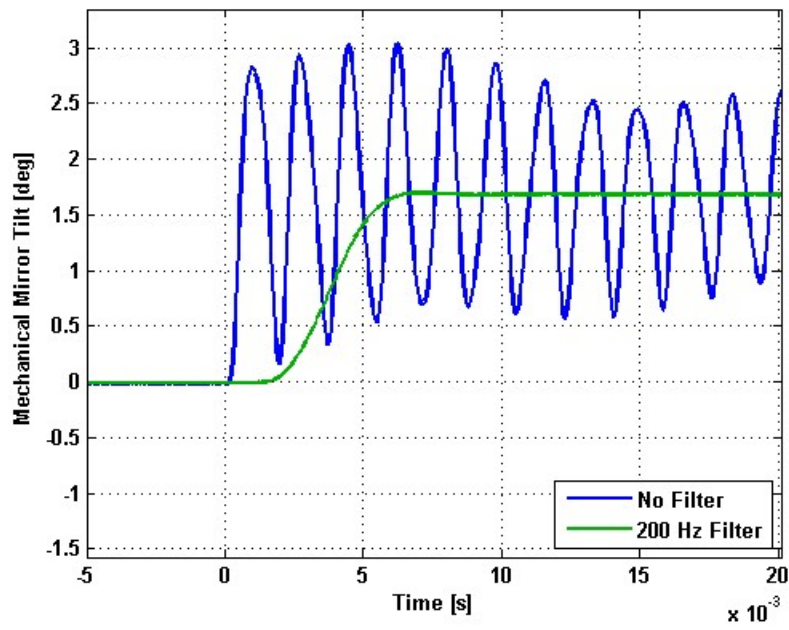


Small Signal Frequency Response - Phase

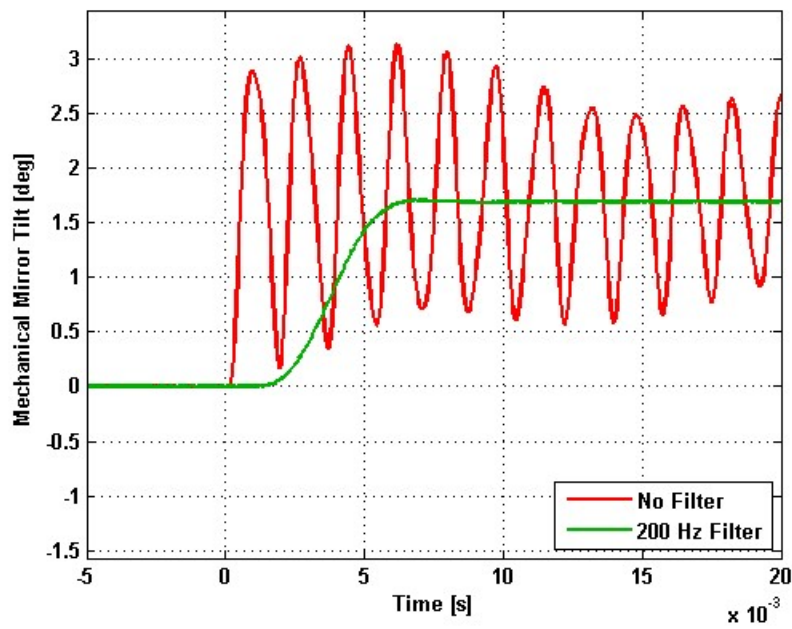


Step Response

X-Axis Step Response

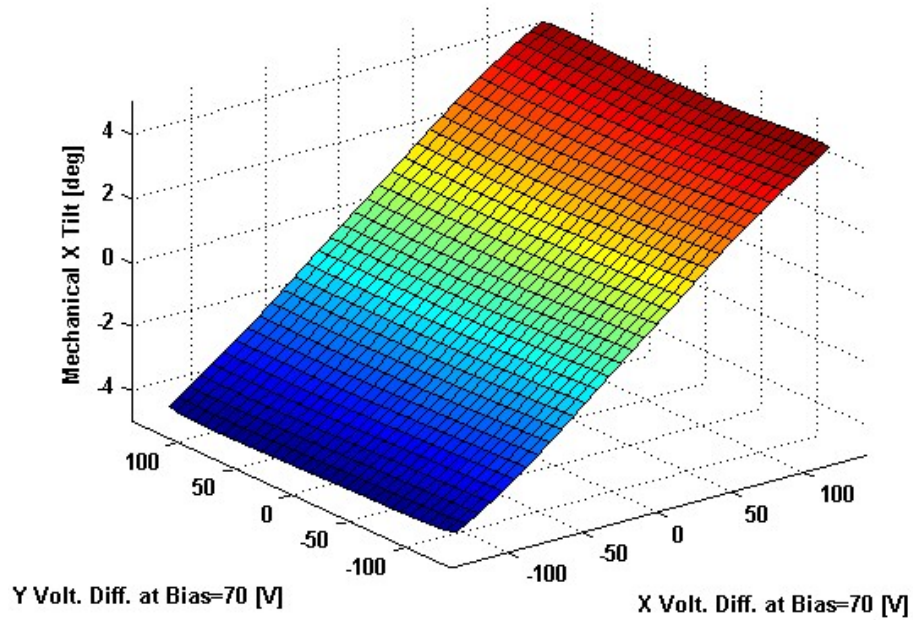


Y-Axis Step Response

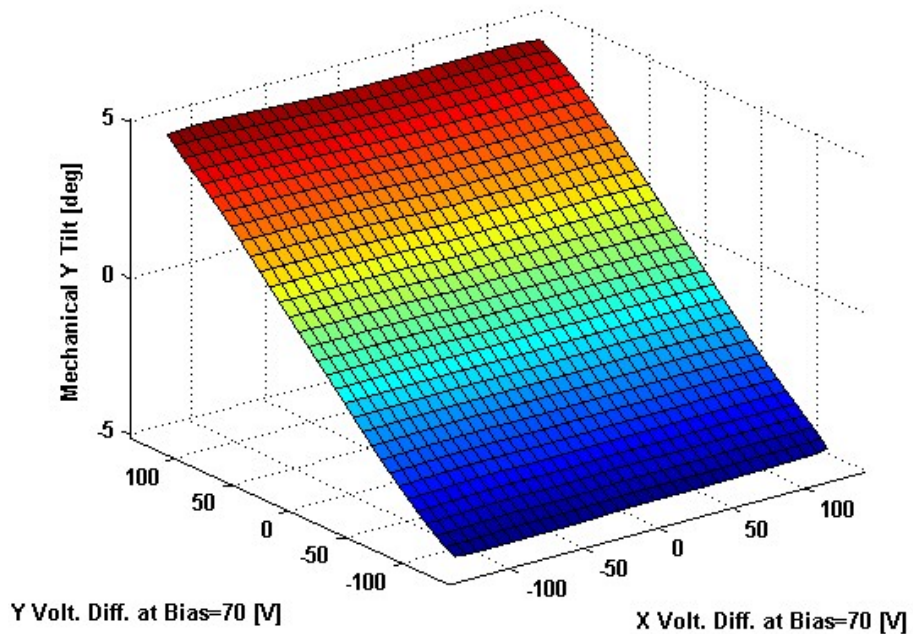


2D Lookup Tables

Voltage vs. X Angle - Lookup Table



Voltage vs. Y Angle - Lookup Table



Y Angle vs. X Angle - Addressable Angles

