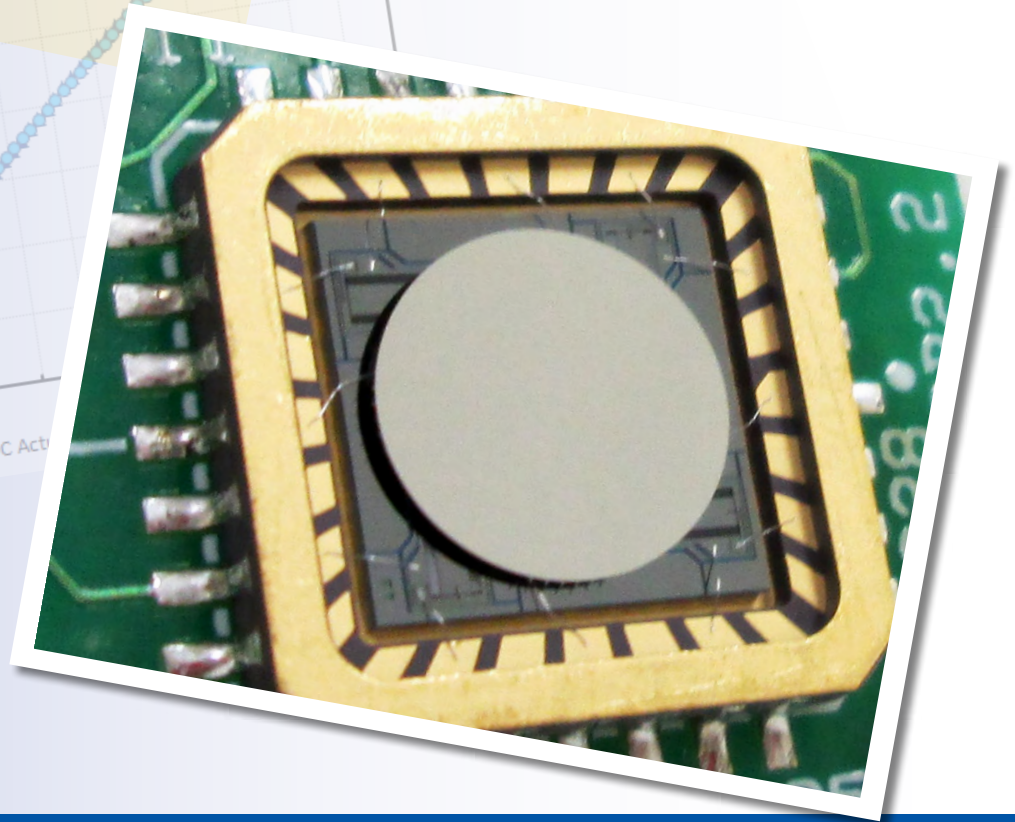
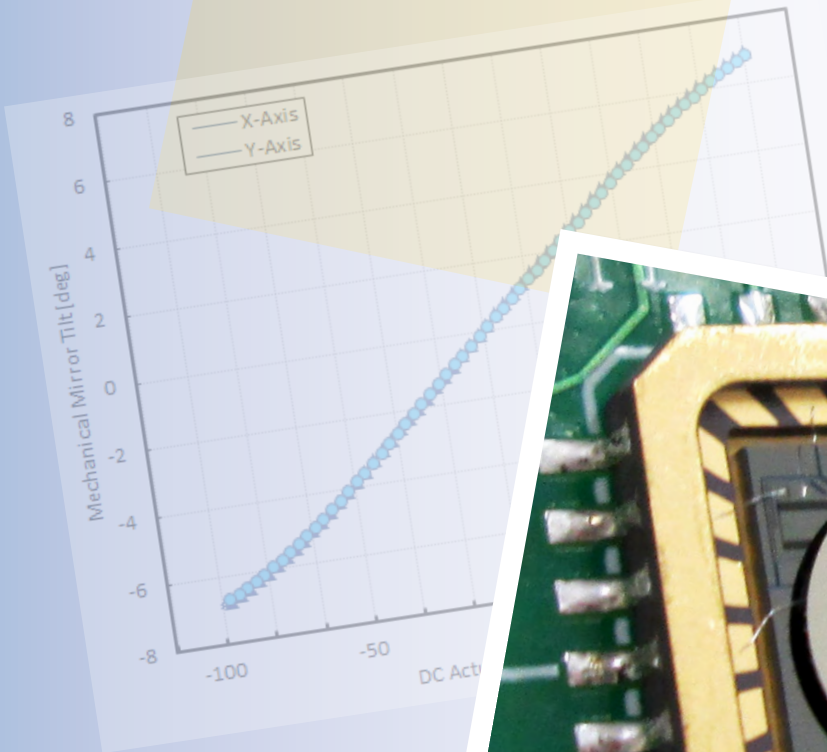


## Gimbal-Less Two-Axis Scanning MEMS Micromirrors

Device Datasheet  
S5260



---

# Device Parameters Summary

**Device ID :** S5260

**Actuator Name :** A4SR8.3

**Actuator Type :** 4-Quadrant (Two-Axis, Bidirectional)

**Mirror Type and Size :** Bonded mirror of 5.0mm diameter

**Mirror Coating :** Aluminum

**Maximum Angle - X Axis [degrees] :** 5.0798

**Maximum Angle - Y Axis [degrees] :** 5.0001

**Maximum Voltage - X Axis [V] :** 157

**Maximum Voltage - Y Axis [V] :** 157

**Bias Voltage [V] :** 80

**Maximum Angle - Coupled Axes [degrees] :** 6.1719

**Resonant Frequency - X Axis [Hz] :** 334

**Resonant Frequency - Y Axis [Hz] :** 330

**Quality Factor- X Axis :** 10

**Quality Factor - Y Axis :** 12

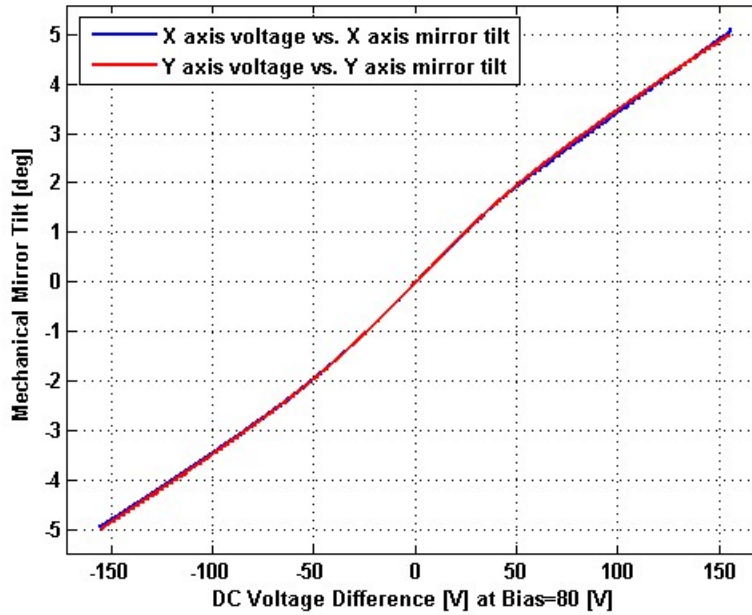
**Recommended LPF Cutoff Frequency (6th Order Bessel) :** 150

**Date and Time Report was Created:** 24-Dec-2015 at 12:51:5

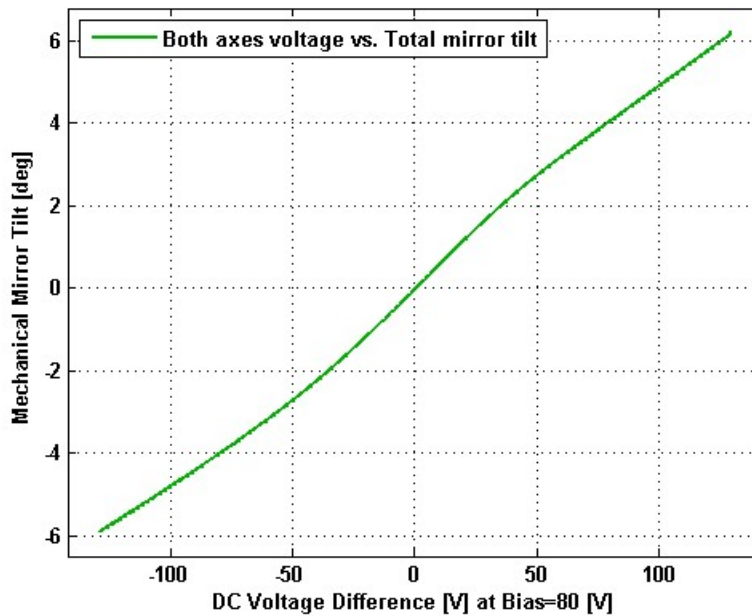
---

# Static Response

## Voltage vs. Angle - Individual Axes



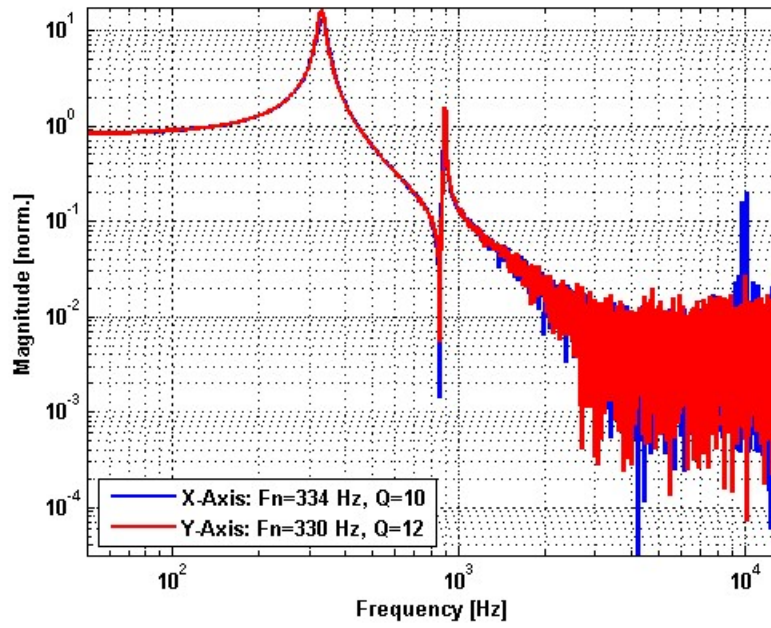
## Voltage vs. Angle - Coupled Axes



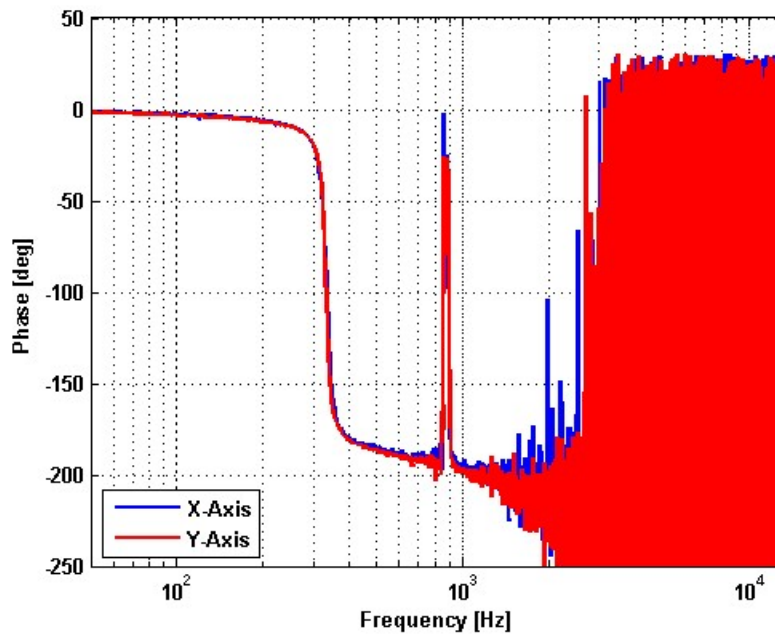
---

# Frequency Response

## Small Signal Frequency Response - Magnitude



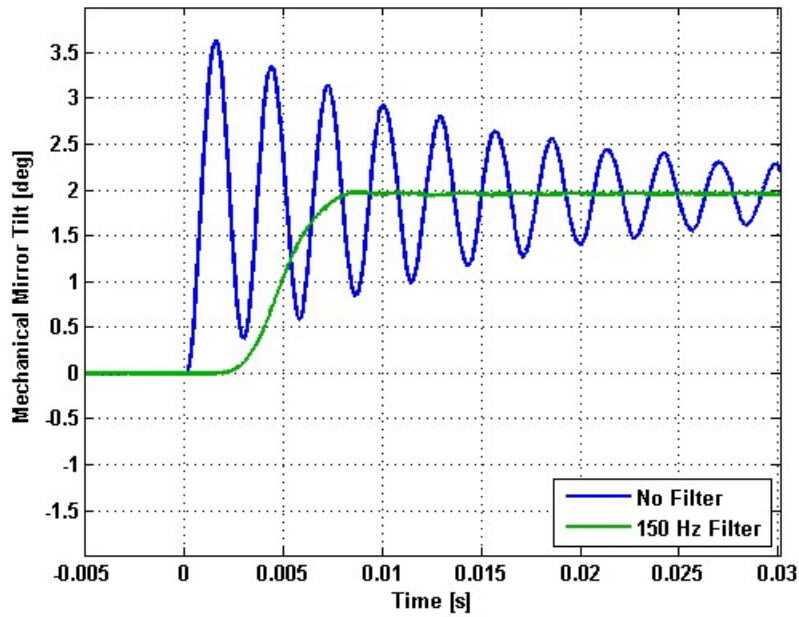
## Small Signal Frequency Response - Phase



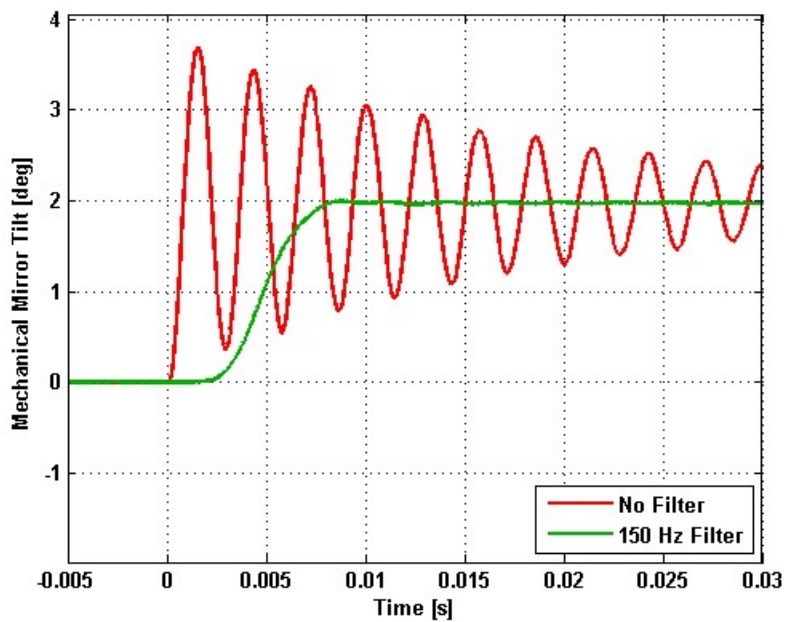
---

# Step Response

## X-Axis Step Response



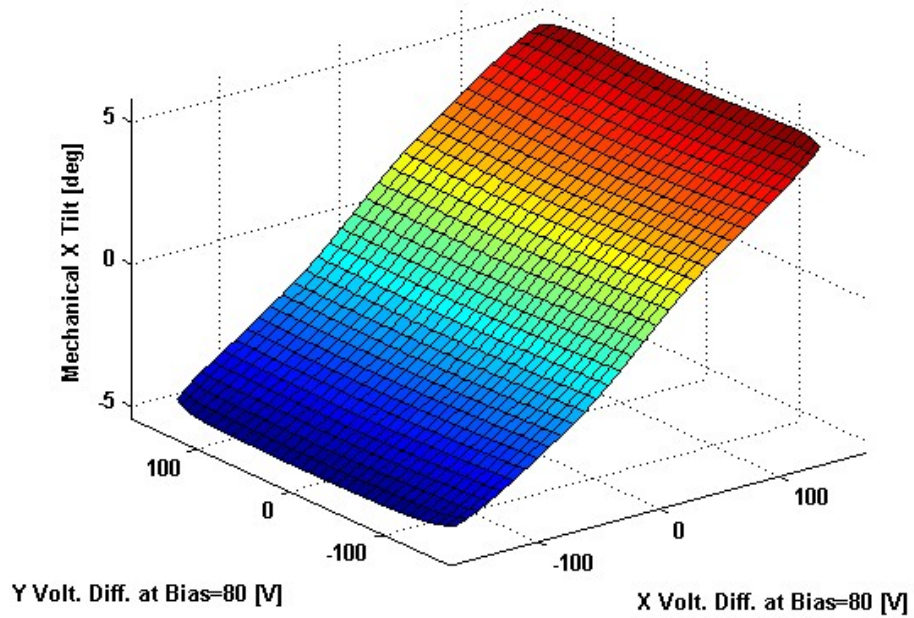
## Y-Axis Step Response



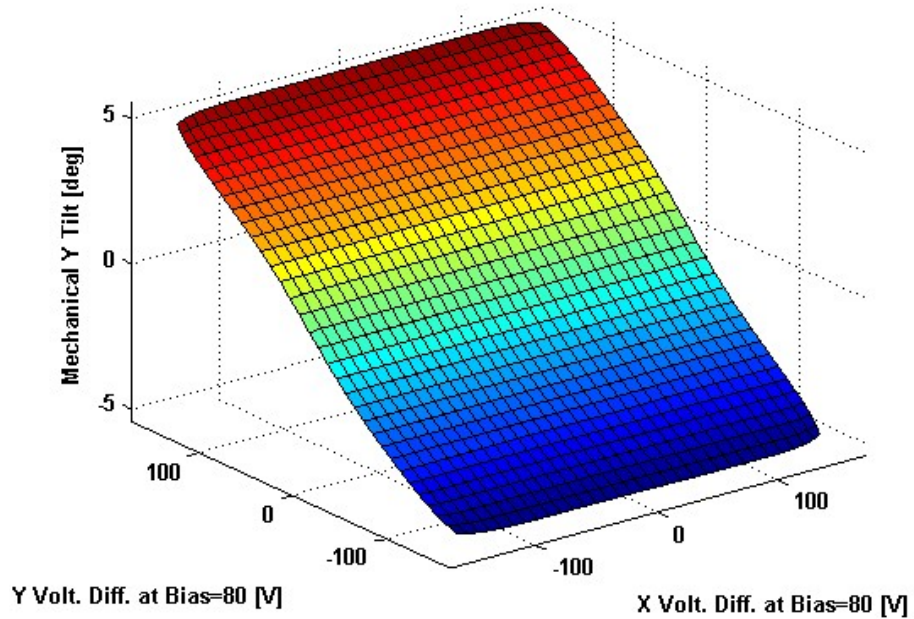
---

# 2D Lookup Tables

## Voltage vs. X Angle - Lookup Table



## Voltage vs. Y Angle - Lookup Table



# Y Angle vs. X Angle - Addressable Angles

