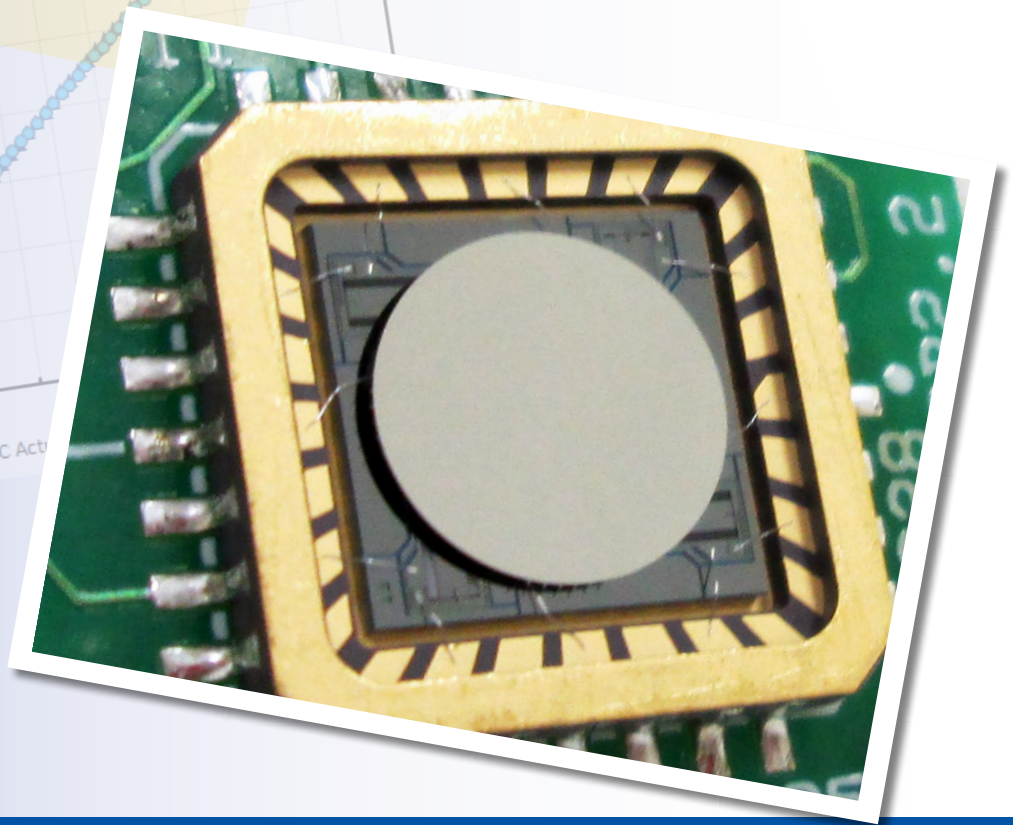
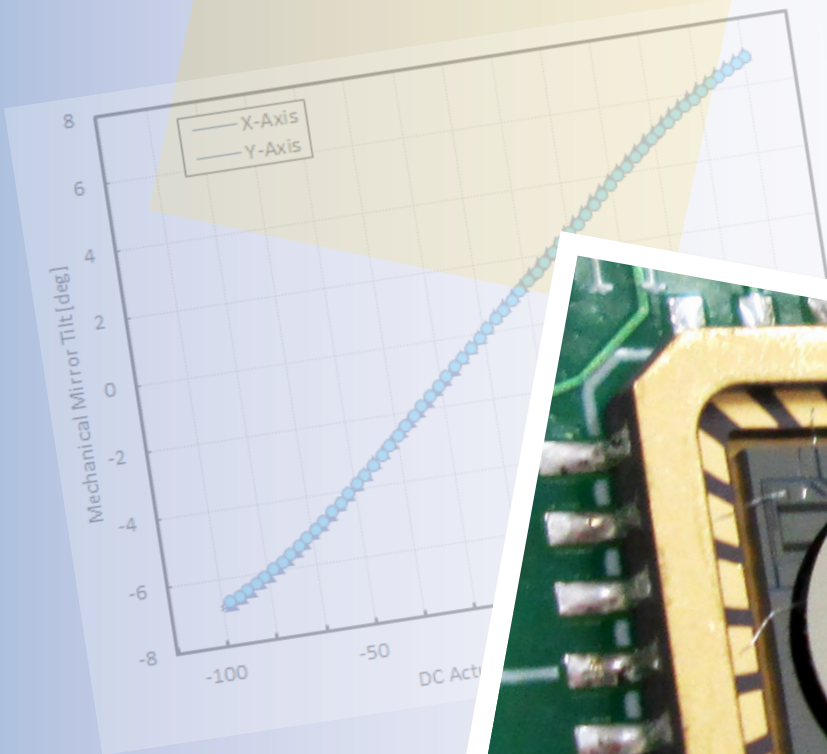


Gimbal-Less Two-Axis Scanning MEMS Micromirrors

Device Datasheet
S2716



Device Parameters Summary

Device ID : S2716

Actuator Type : 13Z2.1

Mirror Type and Size : Bonded mirror of 3.0mm diameter

Mirror Coating : Aluminum

Maximum Angle - X Axis [degrees] : 2.0903

Maximum Angle - Y Axis [degrees] : 2.2101

Maximum Voltage - X Axis [V] : 125

Maximum Voltage - Y Axis [V] : 125

Bias Voltage [V] : 70

Maximum Angle - Coupled Axes [degrees] : 2.6140

Resonant Frequency - X Axis [Hz] : 1281

Resonant Frequency - Y Axis [Hz] : 1237

Quality Factor- X Axis : 42

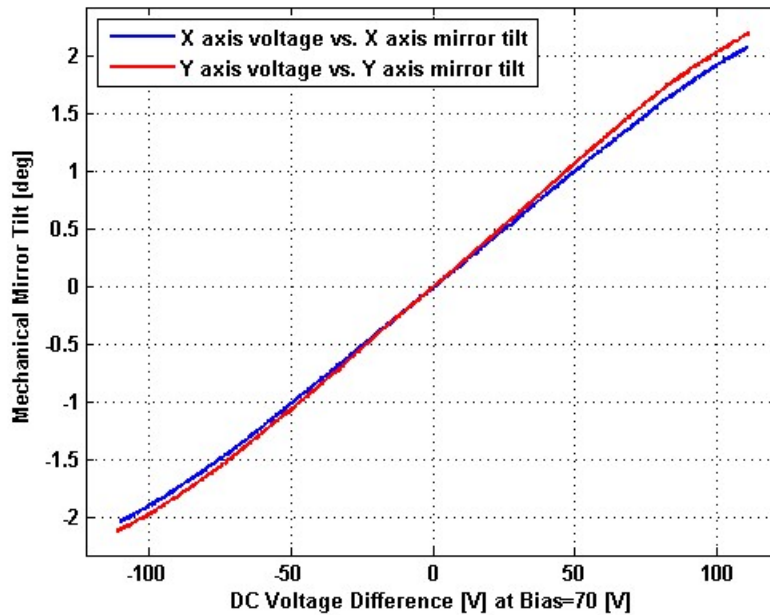
Quality Factor - Y Axis : 39

Recommended LPF Cutoff Frequency (6th Order Bessel) : 480

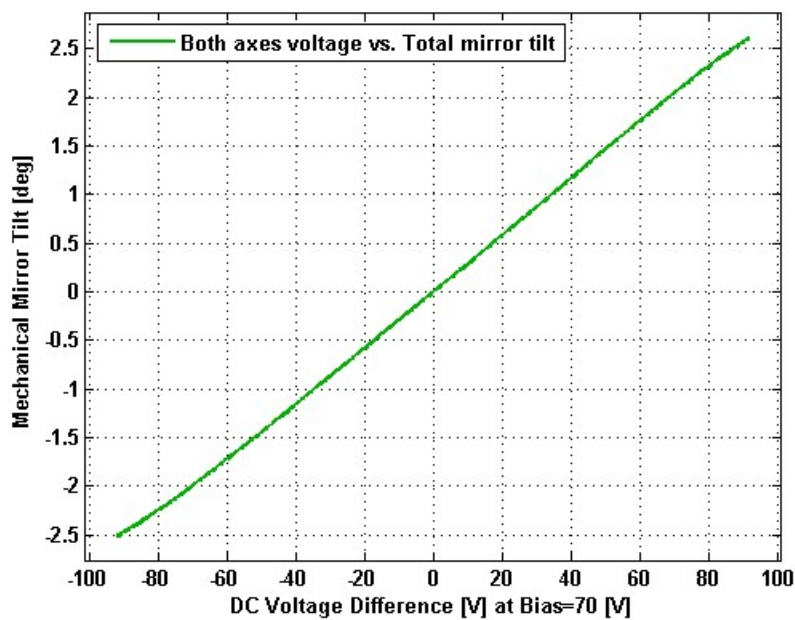
Date and Time Report was Created: 30-Jul-2013 at 20:33:45

Static Response

Voltage vs. Angle - Individual Axes

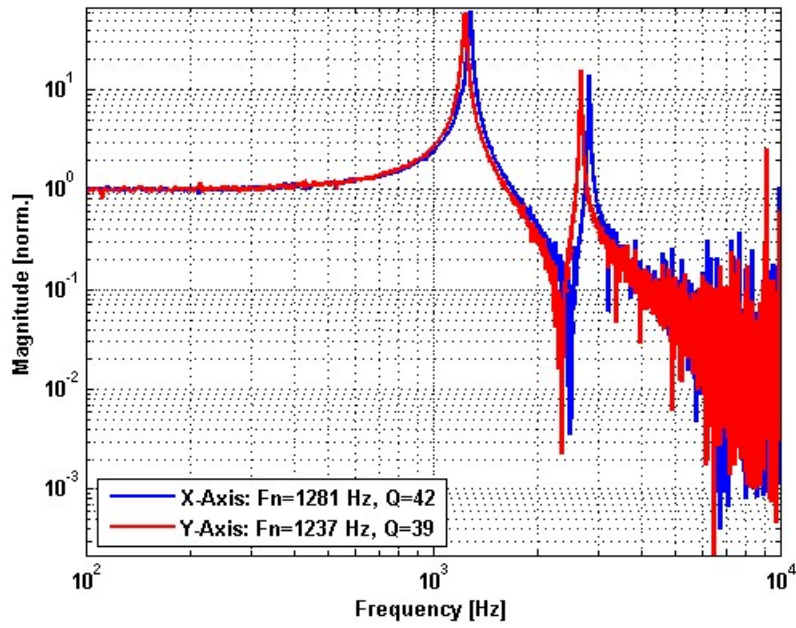


Voltage vs. Angle - Coupled Axes

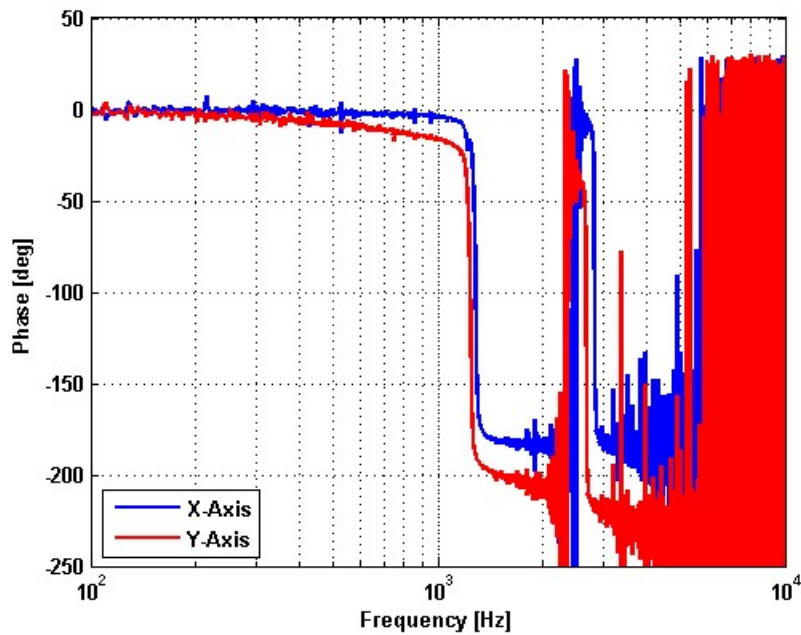


Frequency Response

Small Signal Frequency Response - Magnitude

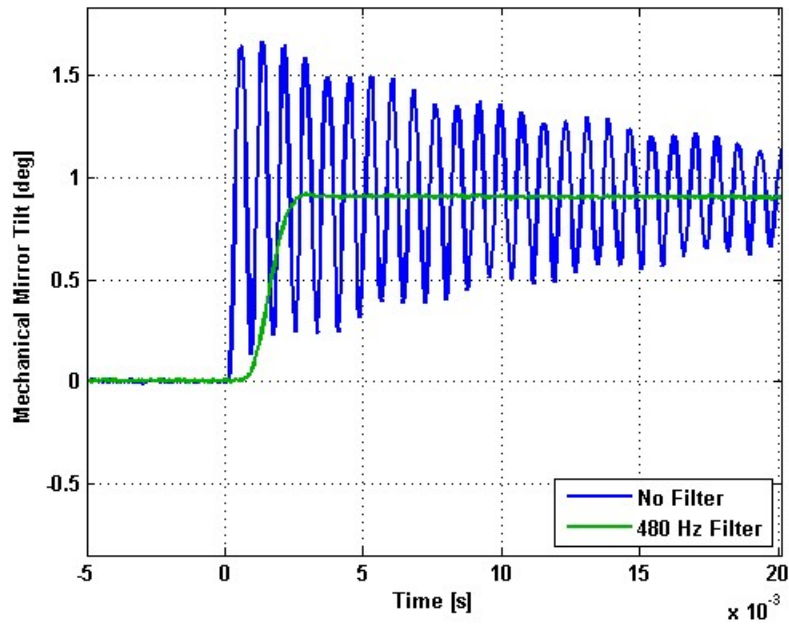


Small Signal Frequency Response - Phase

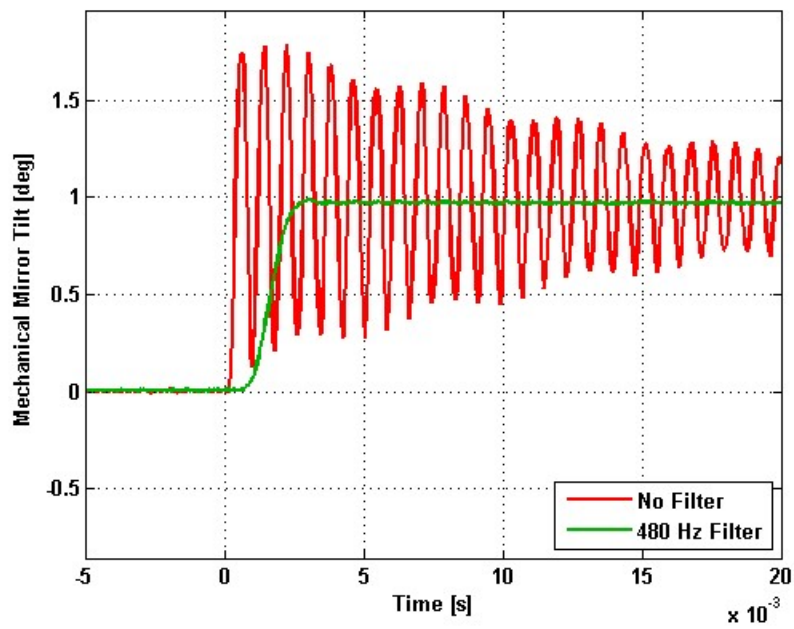


Step Response

X-Axis Step Response

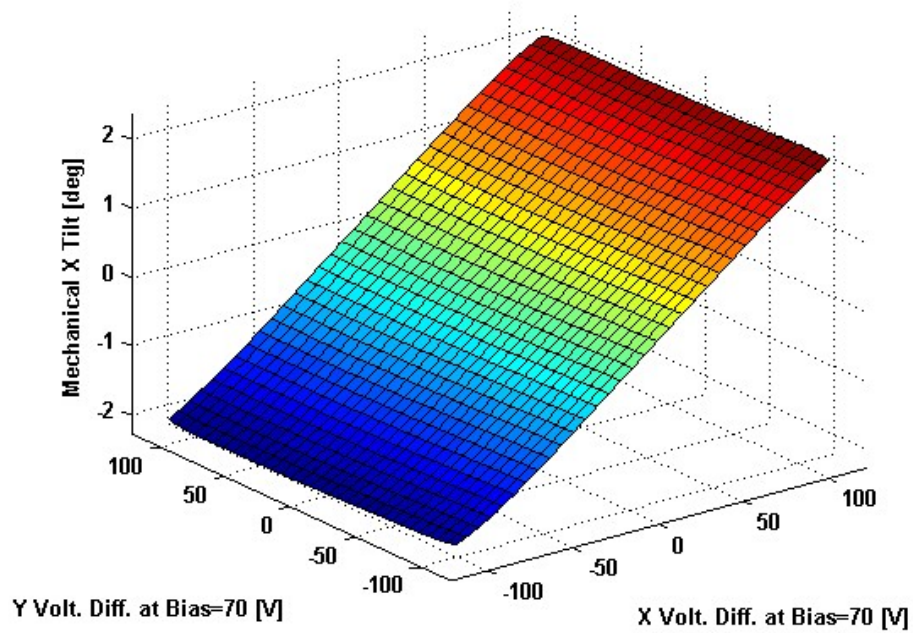


Y-Axis Step Response

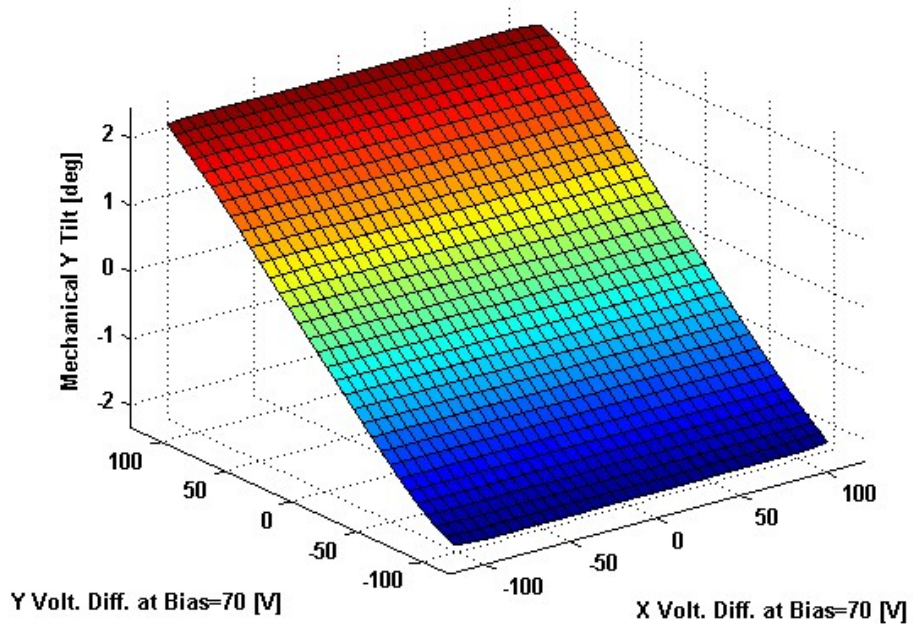


2D Lookup Tables

Voltage vs. X Angle - Lookup Table



Voltage vs. Y Angle - Lookup Table



Y Angle vs. X Angle - Addressable Angles

