
Device Parameters Summary

Device ID : S2625

Actuator Type : A1B2.2

Mirror Type and Size : Bonded mirror of 3.0mm diameter

Mirror Coating : Gold

Maximum Angle - X Axis [degrees] : 4.6772

Maximum Angle - Y Axis [degrees] : 5.0810

Maximum Voltage - X Axis [V] : 126

Maximum Voltage - Y Axis [V] : 122

Bias Voltage [V] : 70

Maximum Angle - Coupled Axes [degrees] : 6.1690

Resonant Frequency - X Axis [Hz] : 437

Resonant Frequency - Y Axis [Hz] : 442

Quality Factor- X Axis : 22

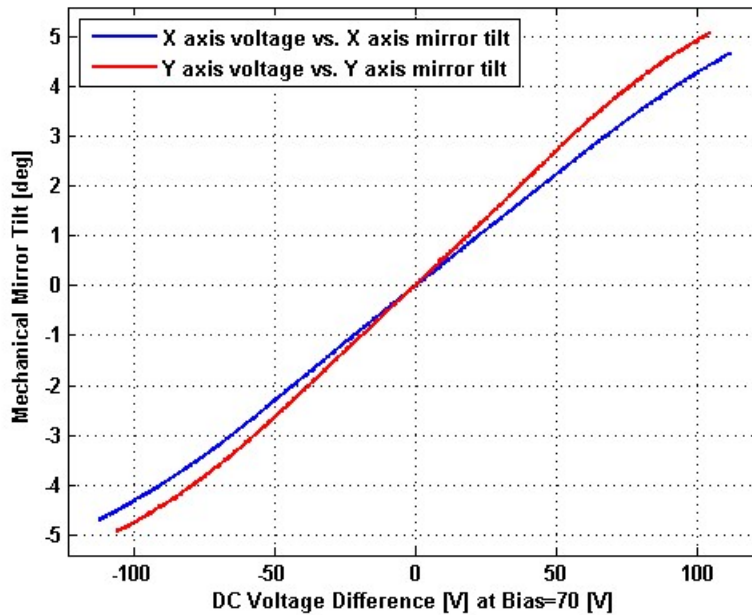
Quality Factor - Y Axis : 13

Recommended LPF Cutoff Frequency (6th Order Bessel) : 160

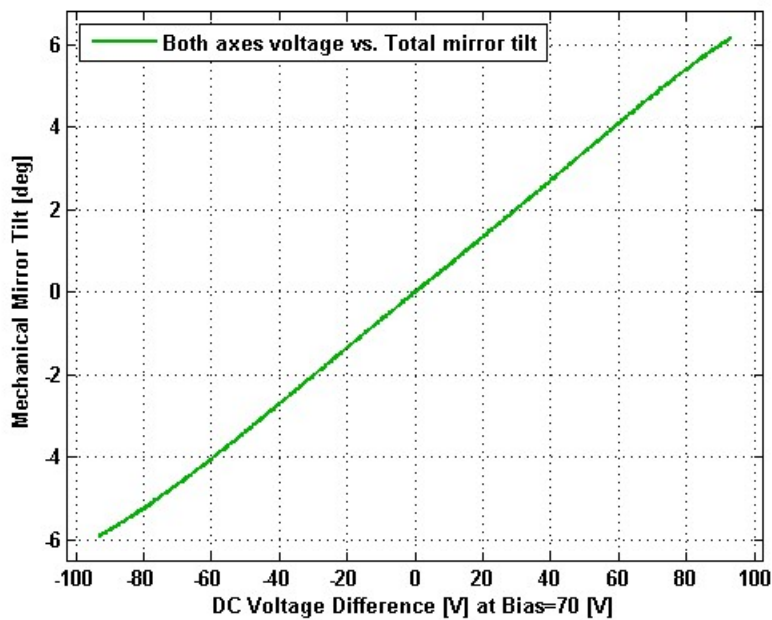
Date and Time Report was Created: 03-Jun-2013 at 21:54:34

Static Response

Voltage vs. Angle - Individual Axes

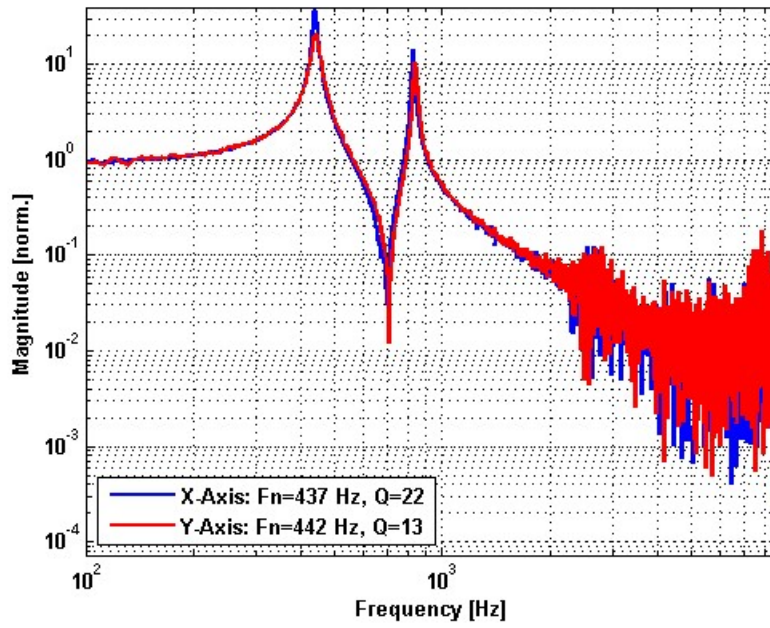


Voltage vs. Angle - Coupled Axes

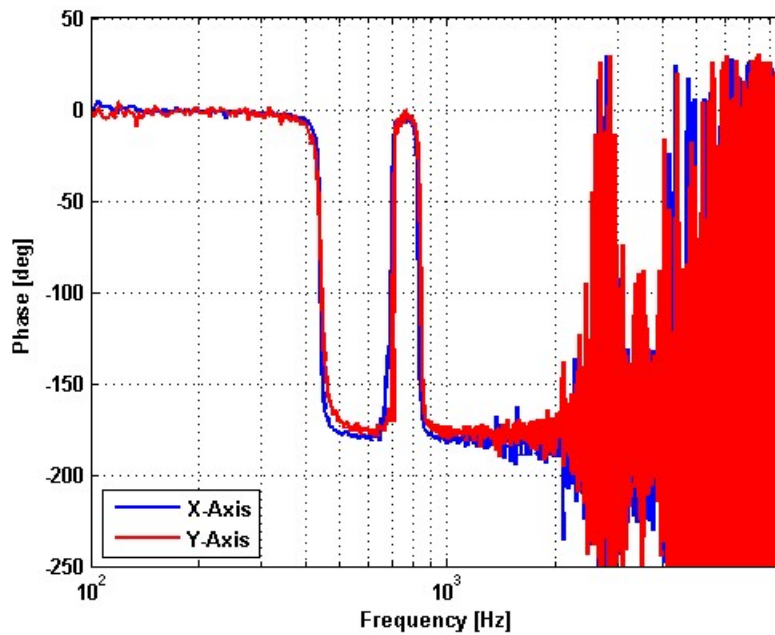


Frequency Response

Small Signal Frequency Response - Magnitude

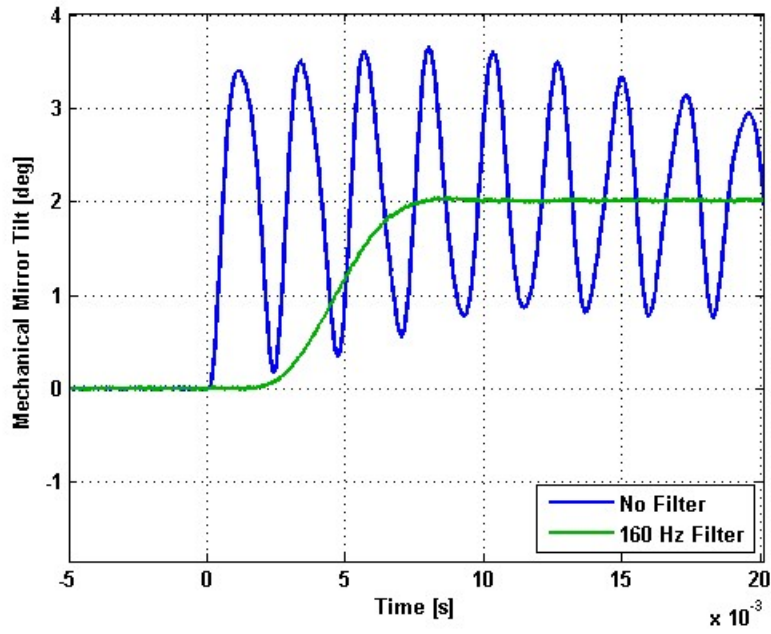


Small Signal Frequency Response - Phase

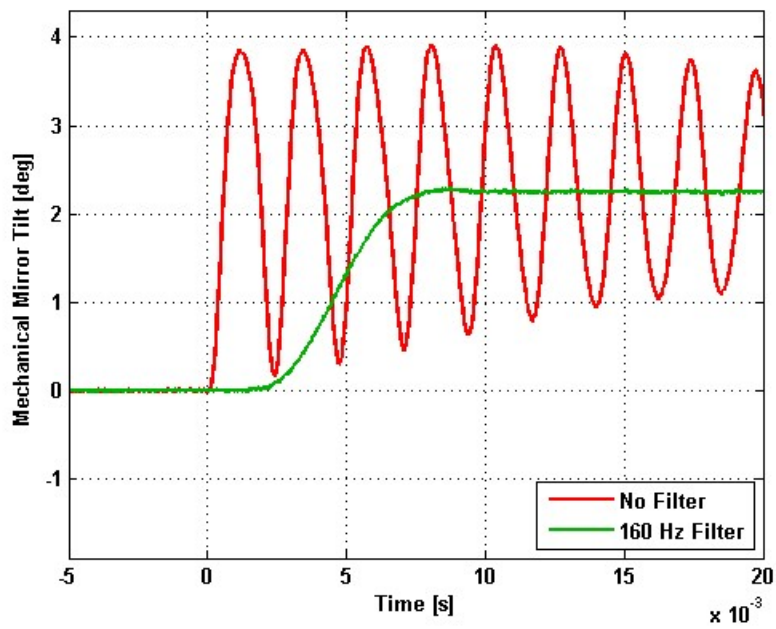


Step Response

X-Axis Step Response

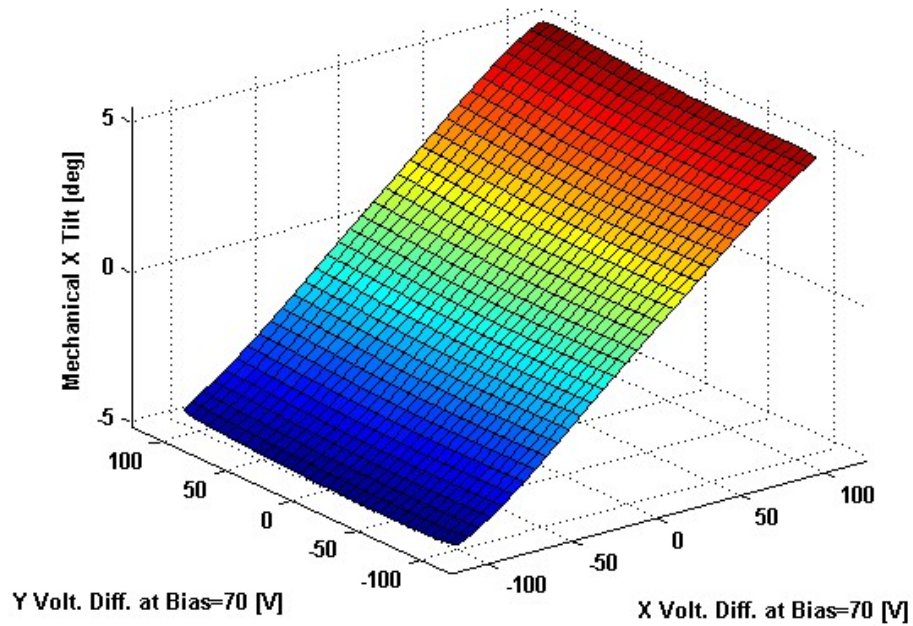


Y-Axis Step Response

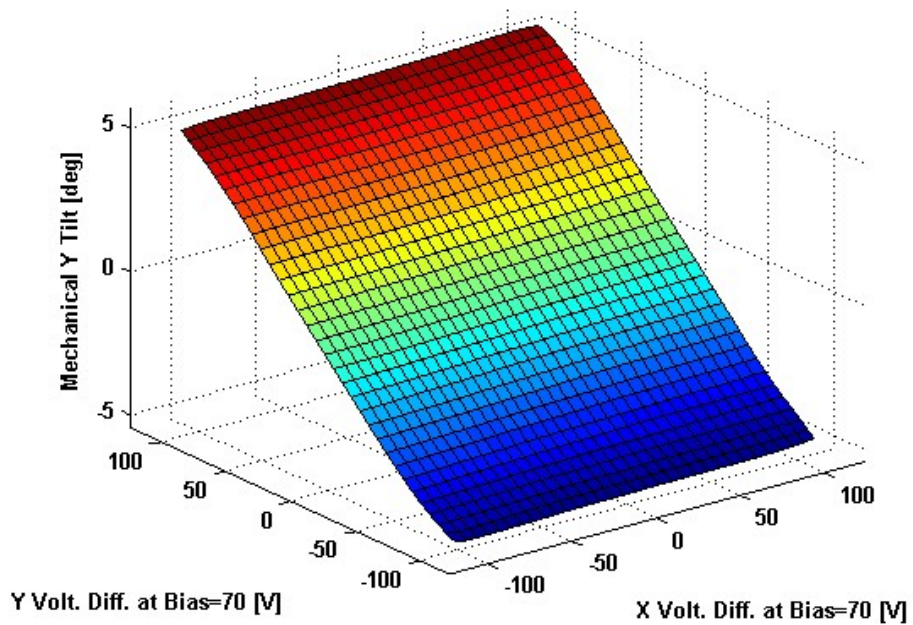


2D Lookup Tables

Voltage vs. X Angle - Lookup Table



Voltage vs. Y Angle - Lookup Table



Y Angle vs. X Angle - Addressable Angles

