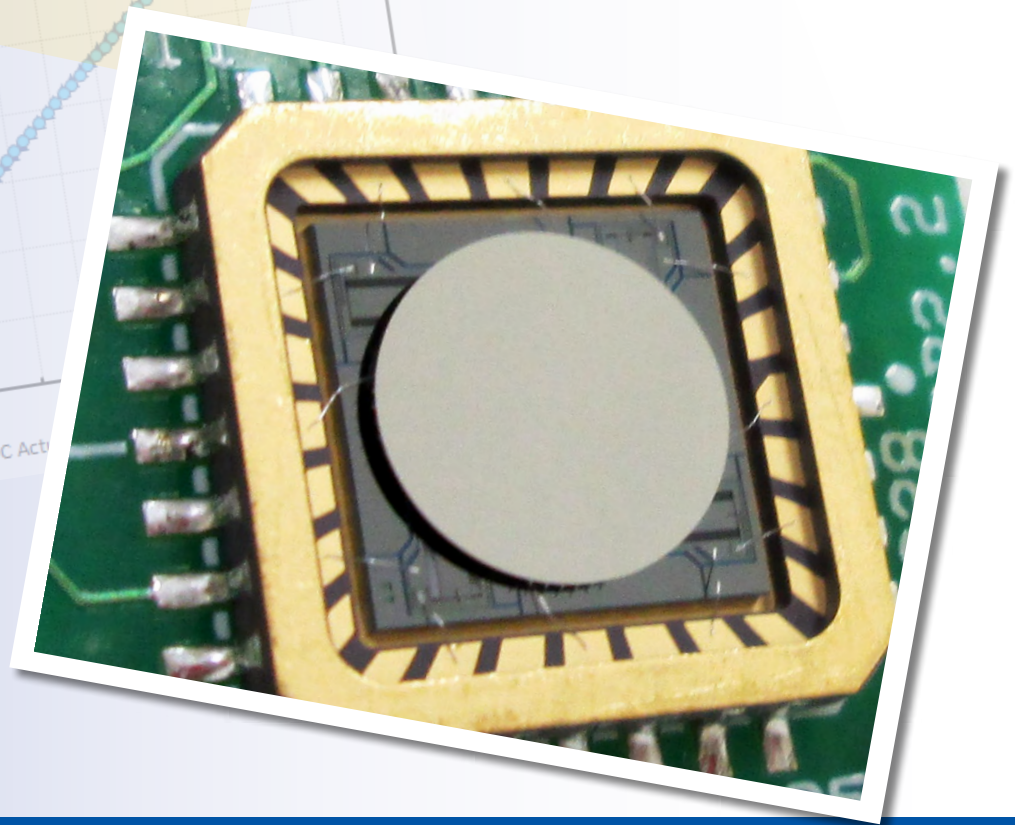
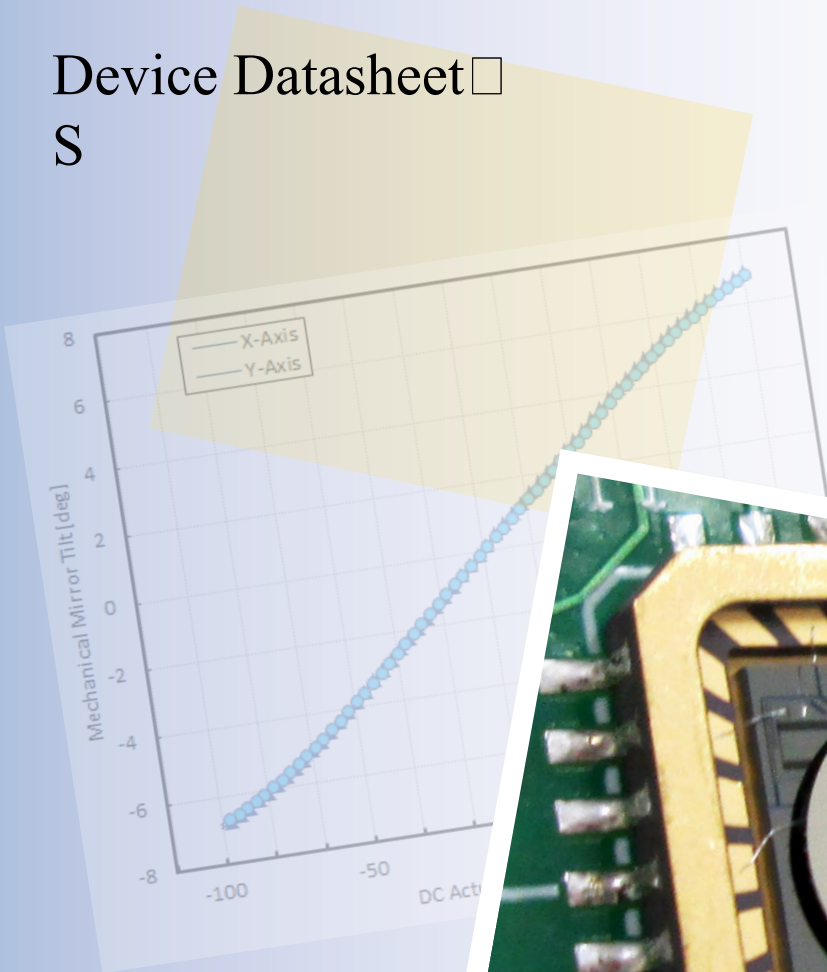


## Gimbal-Less Two-Axis Scanning MEMS Micromirrors

Device Datasheet

S



---

# Device Parameters Summary

**Device ID** : S3680

**Actuator Type** : A1B2.4

**Mirror Type and Size** : Bonded mirror of 2.4mm diameter

**Mirror Coating** : Gold

**Maximum Angle - X Axis [degrees]** : 4.0844

**Maximum Angle - Y Axis [degrees]** : 4.1171

**Maximum Voltage - X Axis [V]** : 137

**Maximum Voltage - Y Axis [V]** : 137

**Bias Voltage [V]** : 70

**Maximum Angle - Coupled Axes [degrees]** : 4.9449

**Resonant Frequency - X Axis [Hz]** : 757

**Resonant Frequency - Y Axis [Hz]** : 757

**Quality Factor- X Axis** : 62

**Quality Factor - Y Axis** : 53

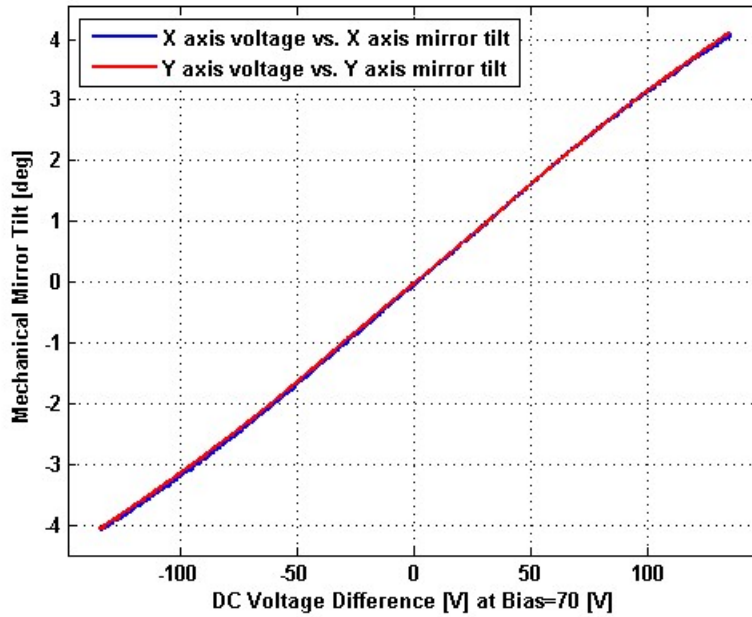
**Recommended LPF Cutoff Frequency (6th Order Bessel)** : 250

**Date and Time Report was Created:** 19-Apr-2014 at 0:3:50

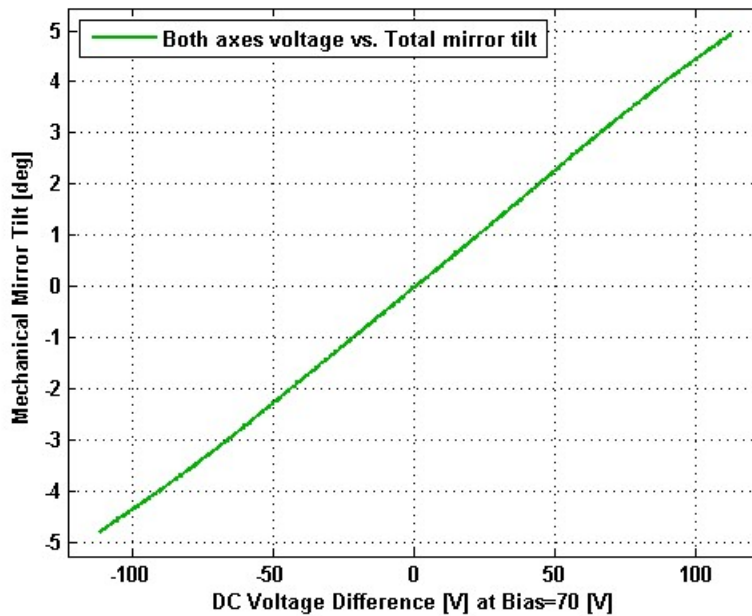
---

# Static Response

## Voltage vs. Angle - Individual Axes



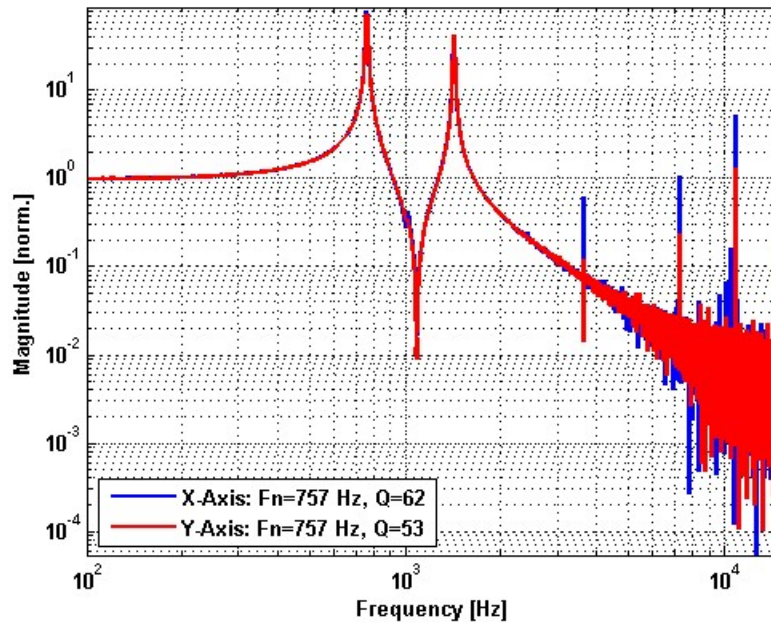
## Voltage vs. Angle - Coupled Axes



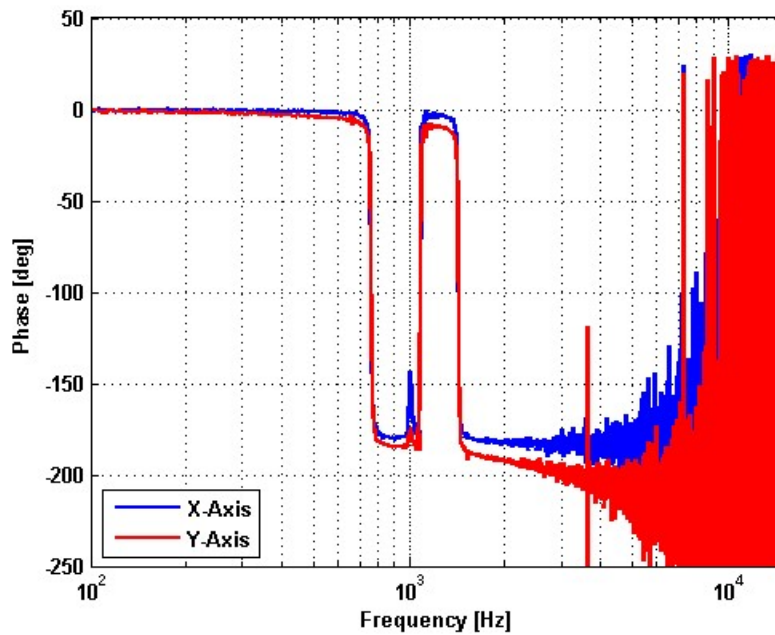
---

# Frequency Response

## Small Signal Frequency Response - Magnitude



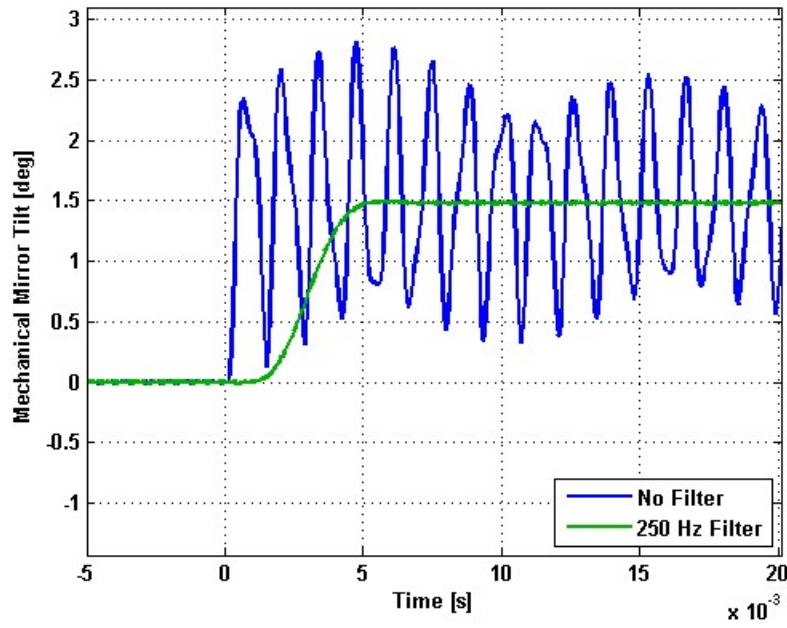
## Small Signal Frequency Response - Phase



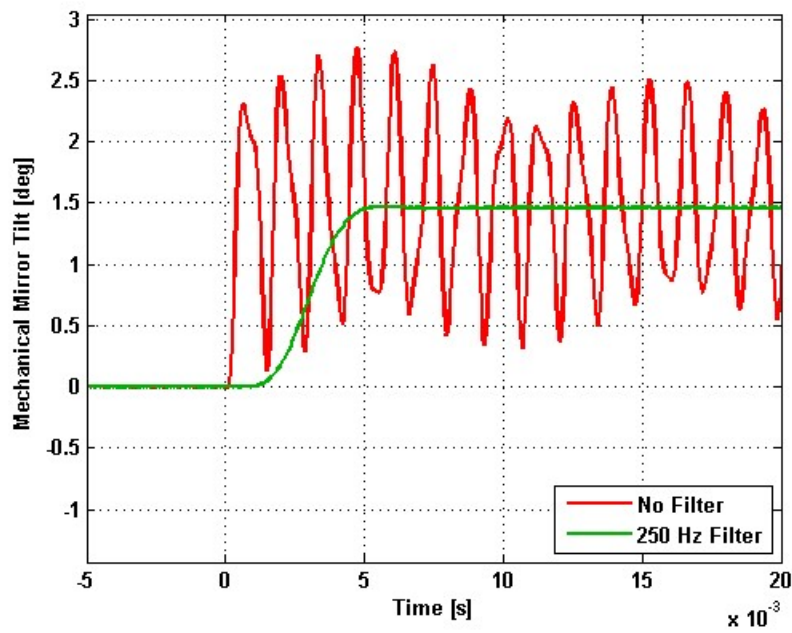
---

# Step Response

## X-Axis Step Response



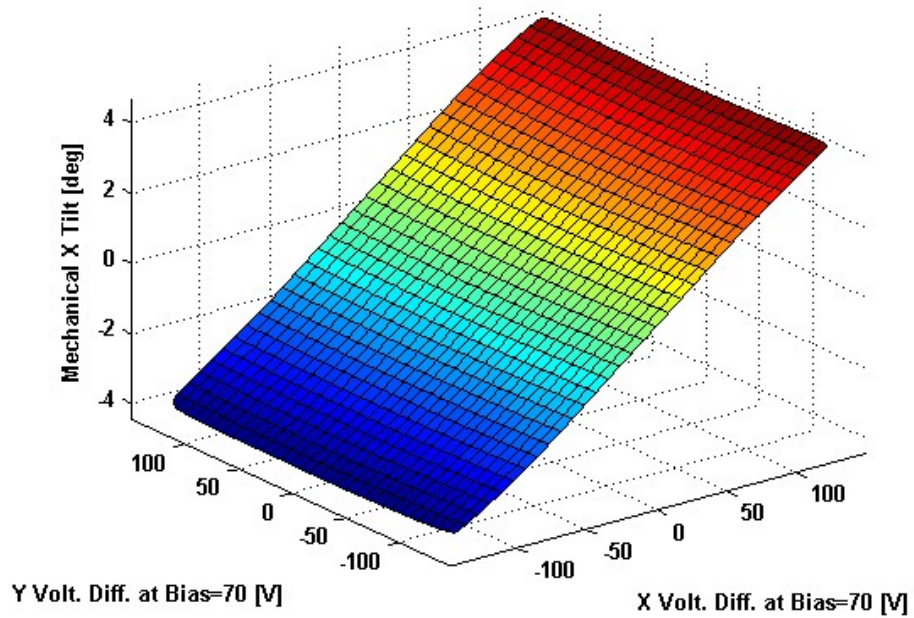
## Y-Axis Step Response



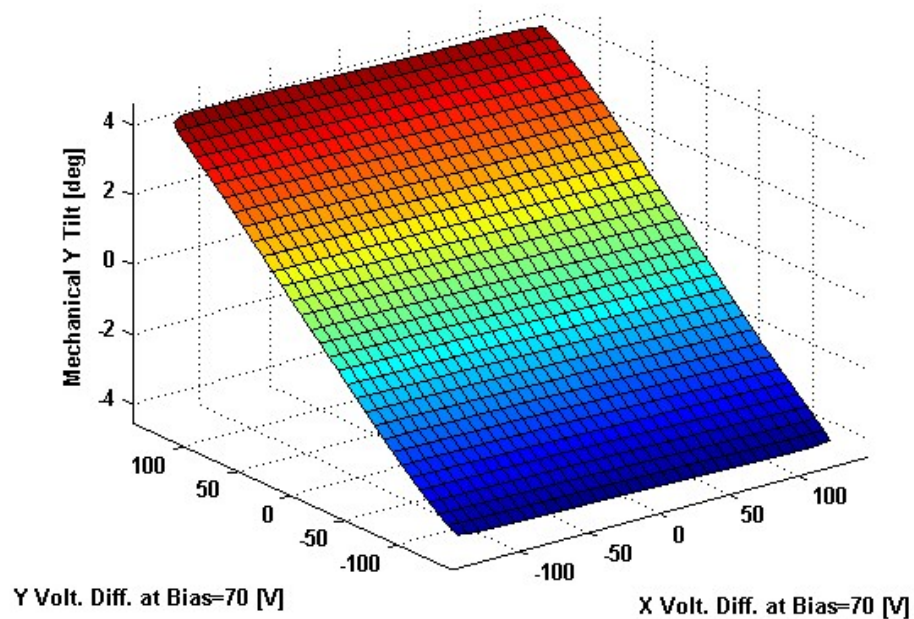
---

# 2D Lookup Tables

## Voltage vs. X Angle - Lookup Table



## Voltage vs. Y Angle - Lookup Table



# Y Angle vs. X Angle - Addressable Angles

