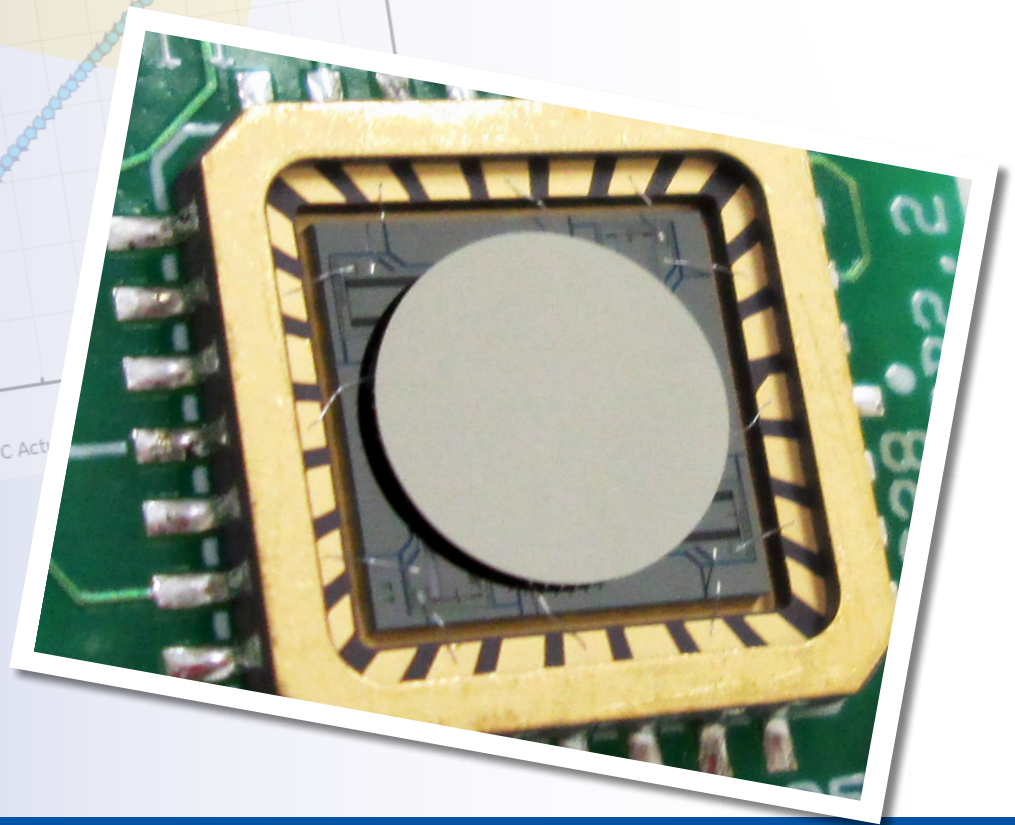
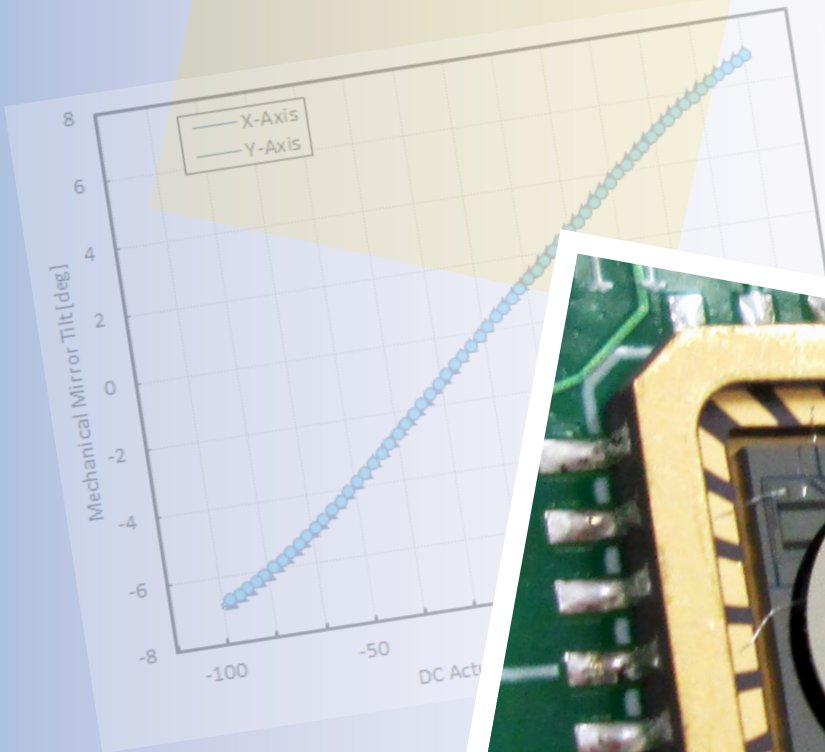


Gimbal-Less Two-Axis Scanning MEMS Micromirrors

Device Datasheet
S3583



Device Parameters Summary

Device ID : S3583

Actuator Type : A1B2.4

Mirror Type and Size : Bonded mirror of 800um diameter

Mirror Coating : Aluminum

Maximum Angle - X Axis [degrees] : 4.2486

Maximum Angle - Y Axis [degrees] : 4.2428

Maximum Voltage - X Axis [V] : 137

Maximum Voltage - Y Axis [V] : 137

Bias Voltage [V] : 70

Maximum Angle - Coupled Axes [degrees] : 5.2622

Resonant Frequency - X Axis [Hz] : 6448

Resonant Frequency - Y Axis [Hz] : 6458

Quality Factor- X Axis : 52

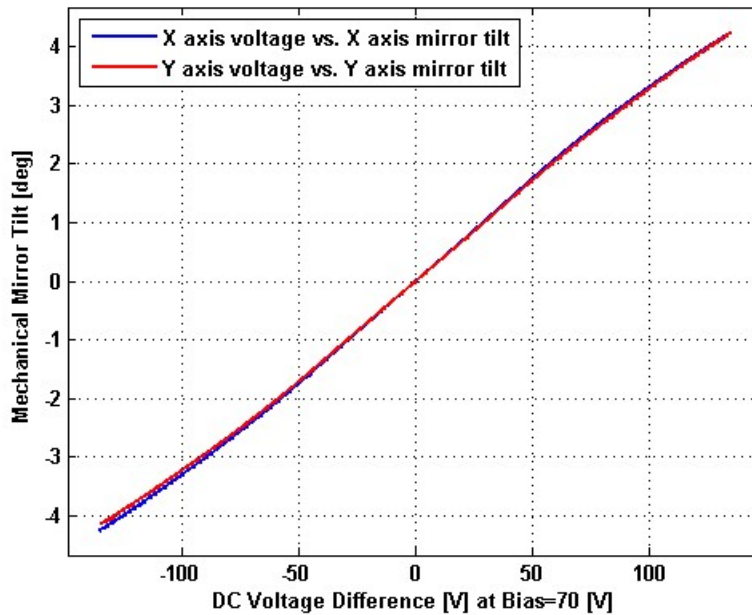
Quality Factor - Y Axis : 51

Recommended LPF Cutoff Frequency (6th Order Bessel) : 3000

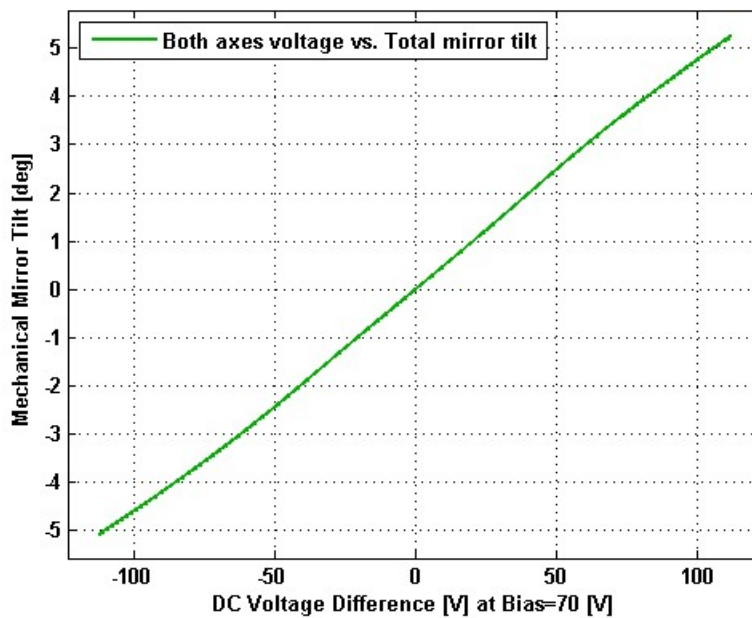
Date and Time Report was Created: 25-Feb-2014 at 14:20:3

Static Response

Voltage vs. Angle - Individual Axes

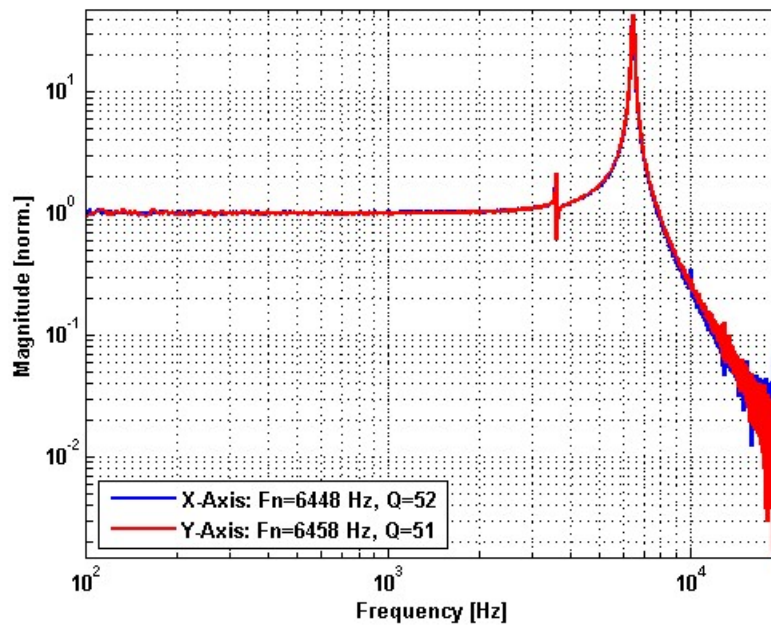


Voltage vs. Angle - Coupled Axes

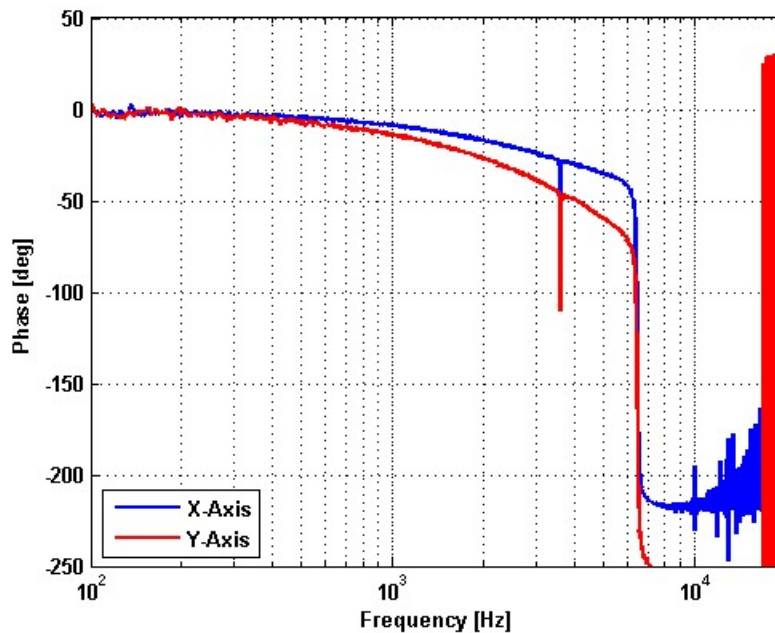


Frequency Response

Small Signal Frequency Response - Magnitude

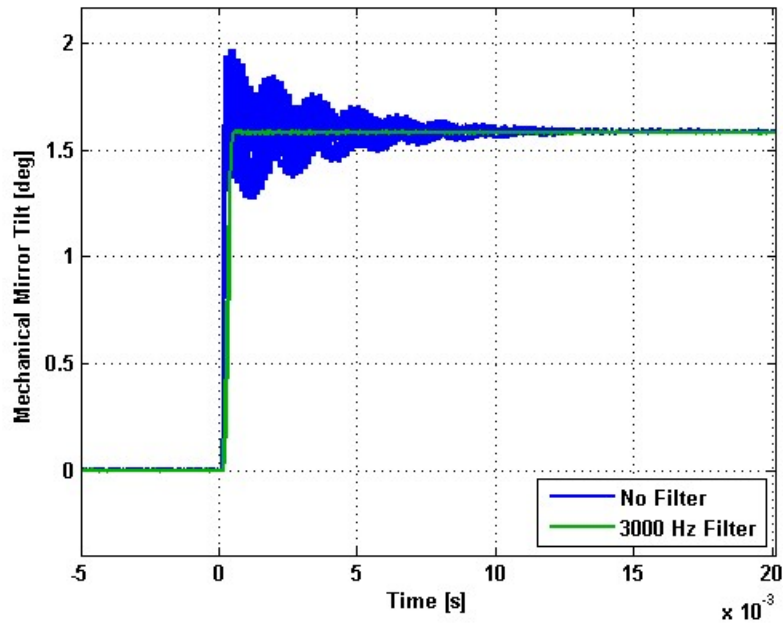


Small Signal Frequency Response - Phase

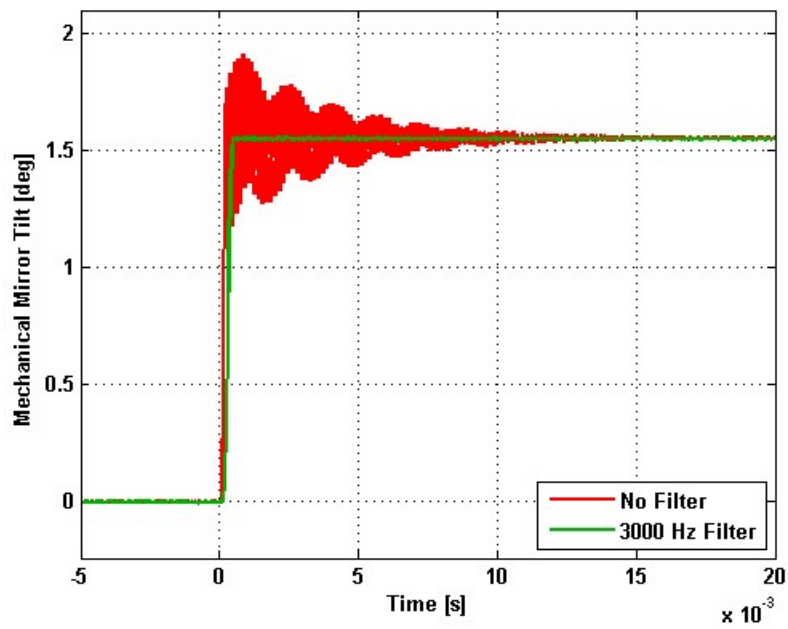


Step Response

X-Axis Step Response

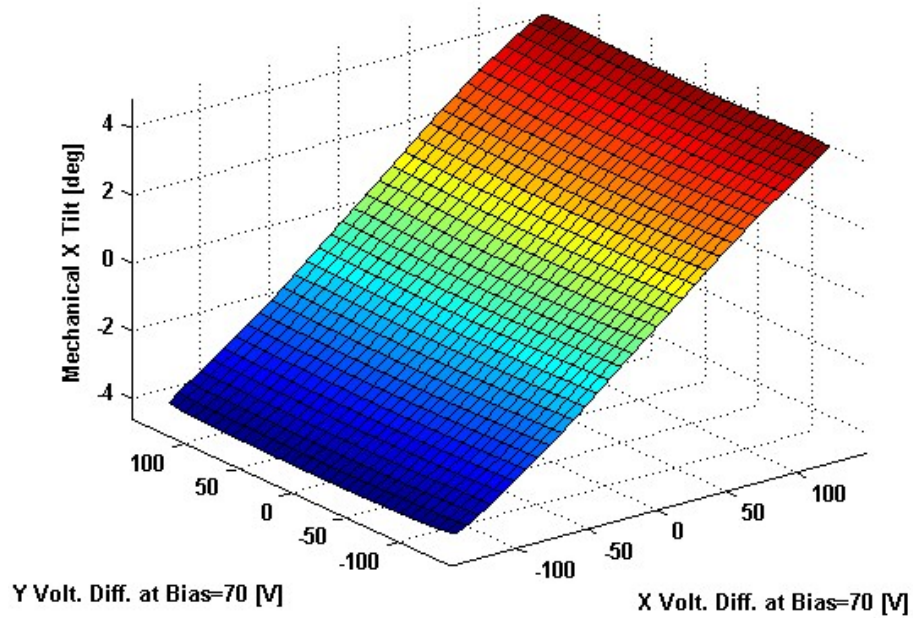


Y-Axis Step Response

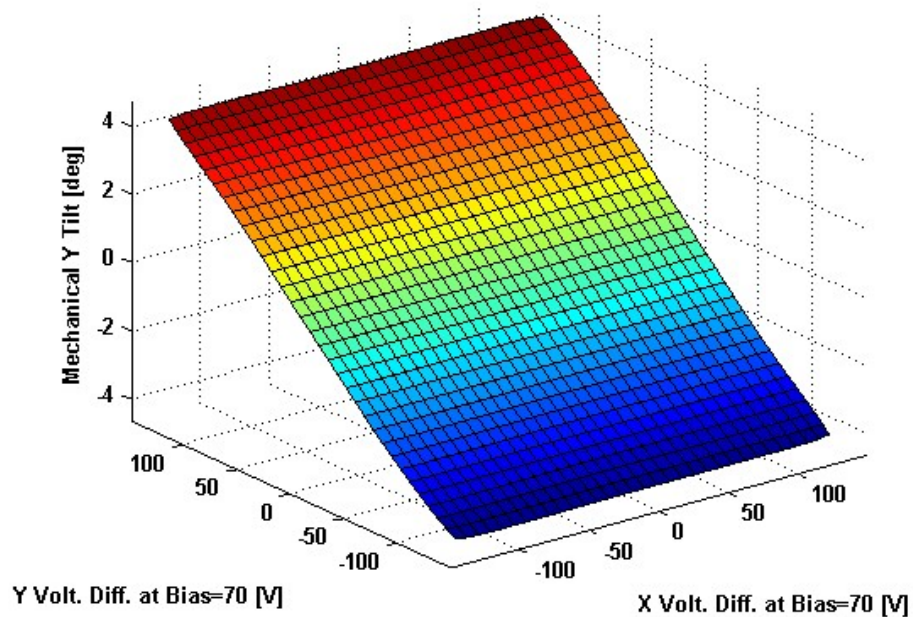


2D Lookup Tables

Voltage vs. X Angle - Lookup Table



Voltage vs. Y Angle - Lookup Table



Y Angle vs. X Angle - Addressable Angles

